

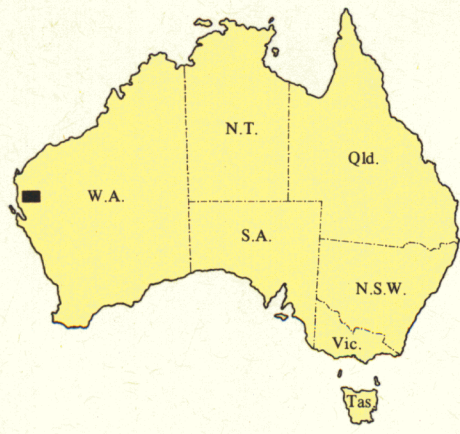
KENNEDY RANGE  
GEOLOGICAL SURVEY OF WESTERN AUSTRALIA

AUSTRALIA 1:250 000 GEOLOGICAL SERIES

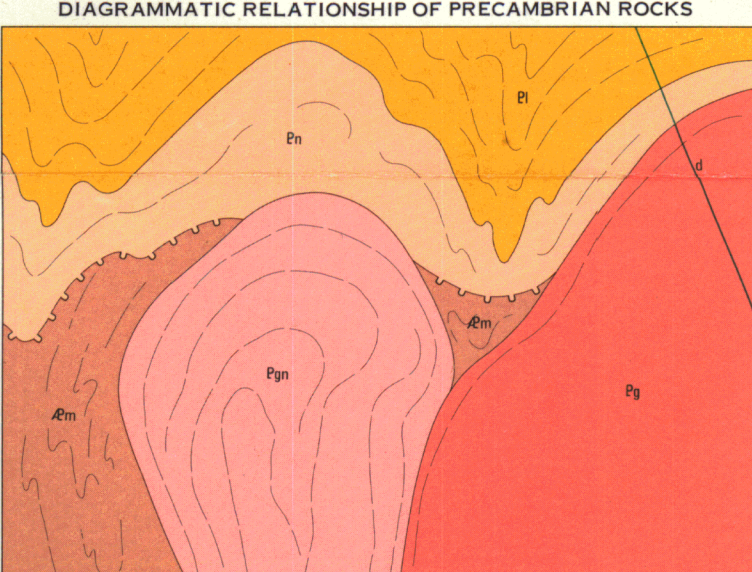
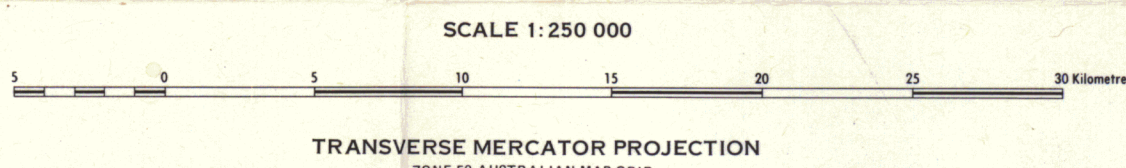
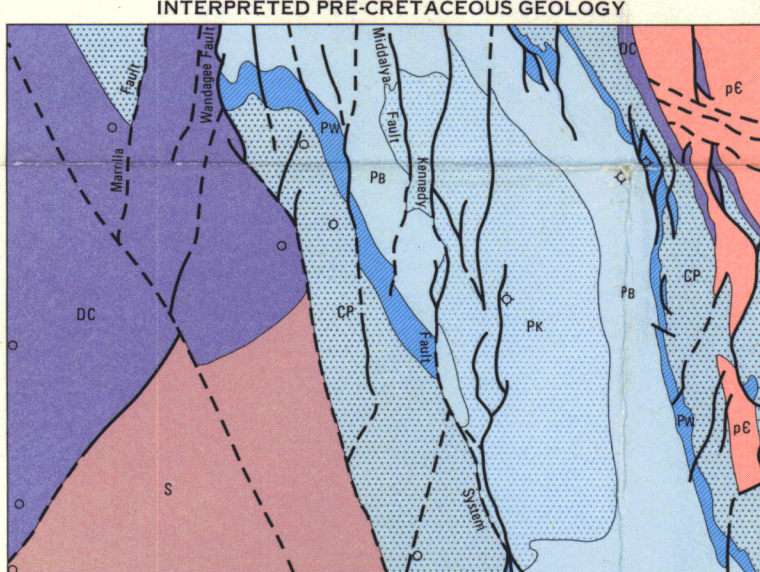
SHEET SG 50-1

SYMBOLS

Geological boundary	—
Fault	—
approximate, inferred or concealed	- - - -
Shear zone	~~~~~
Fold	~~~~~
anticlinal, axial trace	~~~~~
synclinal, axial trace	~~~~~
plunge of minor right fold (later map)	~~~~~
plunge of minor left fold (later map)	~~~~~
bedding	—
vertical	—
horizontal	—
truncation	—
palaeocurrent direction	—
Quaternary	—
movement cut in Precambrian rocks	—
direction of movement uncertain	—
structure within section	—
direction of movement known	—
unknown	—
Graben	—
Anticline, measured	—
vertical	—
Proterozoic, measured	—
Metamorphic foliation	—
measured	—
vertical	—
Chimney, upcast or circulation change	—
vertical	—
Location	—
mineral elongation	—
mineral elongation	—
Location, probably structural origin	—
Fossil locality	—
general	—
road	—
Type section locality	—
Kart locality	—
Highway with route marker	—
Formed road	—
Track	—
Homestead	—
Building	—
Locality	—
Horizontal control, major, minor	—
Vertical control, major, minor	—
Landing ground	—
Watercourse, intermittent	—
Permanence	—
Boat	—
Well	—
Archean line	—
Equipment, diesel or windpump	—
Dam	—
Tank	—
Pump	—
Spring	—
Pipeline	—
Coloured	—
Position approximate	—
Sand dunes	—
Petroleum exploration well	—
Dry, abandoned	—
Stratigraphic test	—
Mine, not being worked	—
Quarry	—
Mineral occurrence	—
Barite	—
Gasconet (proposed)	—



INDEX TO ADJOINING SHEETS	
Sheet	Scale
SG 49-1	1:250 000
SG 49-2	1:250 000
SG 49-3	1:250 000
SG 49-4	1:250 000
SG 49-5	1:250 000
SG 49-6	1:250 000
SG 49-7	1:250 000
SG 49-8	1:250 000
SG 49-9	1:250 000
SG 49-10	1:250 000
SG 49-11	1:250 000
SG 49-12	1:250 000
SG 49-13	1:250 000
SG 49-14	1:250 000
SG 49-15	1:250 000
SG 49-16	1:250 000
SG 49-17	1:250 000
SG 49-18	1:250 000
SG 49-19	1:250 000
SG 49-20	1:250 000
SG 49-21	1:250 000
SG 49-22	1:250 000
SG 49-23	1:250 000
SG 49-24	1:250 000
SG 49-25	1:250 000
SG 49-26	1:250 000
SG 49-27	1:250 000
SG 49-28	1:250 000
SG 49-29	1:250 000
SG 49-30	1:250 000
SG 49-31	1:250 000
SG 49-32	1:250 000
SG 49-33	1:250 000
SG 49-34	1:250 000
SG 49-35	1:250 000
SG 49-36	1:250 000
SG 49-37	1:250 000
SG 49-38	1:250 000
SG 49-39	1:250 000
SG 49-40	1:250 000
SG 49-41	1:250 000
SG 49-42	1:250 000
SG 49-43	1:250 000
SG 49-44	1:250 000
SG 49-45	1:250 000
SG 49-46	1:250 000
SG 49-47	1:250 000
SG 49-48	1:250 000
SG 49-49	1:250 000
SG 49-50	1:250 000
SG 49-51	1:250 000
SG 49-52	1:250 000
SG 49-53	1:250 000
SG 49-54	1:250 000
SG 49-55	1:250 000
SG 49-56	1:250 000
SG 49-57	1:250 000
SG 49-58	1:250 000
SG 49-59	1:250 000
SG 49-60	1:250 000
SG 49-61	1:250 000
SG 49-62	1:250 000
SG 49-63	1:250 000
SG 49-64	1:250 000
SG 49-65	1:250 000
SG 49-66	1:250 000
SG 49-67	1:250 000
SG 49-68	1:250 000
SG 49-69	1:250 000
SG 49-70	1:250 000
SG 49-71	1:250 000
SG 49-72	1:250 000
SG 49-73	1:250 000
SG 49-74	1:250 000
SG 49-75	1:250 000
SG 49-76	1:250 000
SG 49-77	1:250 000
SG 49-78	1:250 000
SG 49-79	1:250 000
SG 49-80	1:250 000
SG 49-81	1:250 000
SG 49-82	1:250 000
SG 49-83	1:250 000
SG 49-84	1:250 000
SG 49-85	1:250 000
SG 49-86	1:250 000
SG 49-87	1:250 000
SG 49-88	1:250 000
SG 49-89	1:250 000
SG 49-90	1:250 000
SG 49-91	1:250 000
SG 49-92	1:250 000
SG 49-93	1:250 000
SG 49-94	1:250 000
SG 49-95	1:250 000
SG 49-96	1:250 000
SG 49-97	1:250 000
SG 49-98	1:250 000
SG 49-99	1:250 000
SG 49-100	1:250 000



SECTION A-B

SECTION C-D

KENNEDY RANGE  
SHEET SG 50-1

SECOND EDITION 1985  
© Western Australia 1985

HON. DAVID PARKER, M.L.A.  
MINISTER FOR MINERALS AND ENERGY  
A. F. TRENDALL, DIRECTOR, GEOLOGICAL SURVEY DIVISION

941613 "a" 1985  
GEOLOGICAL SURVEY  
& GENERAL LIBRARY  
- 5 AUG 1985  
DEPARTMENT OF MINES  
WESTERN AUSTRALIA