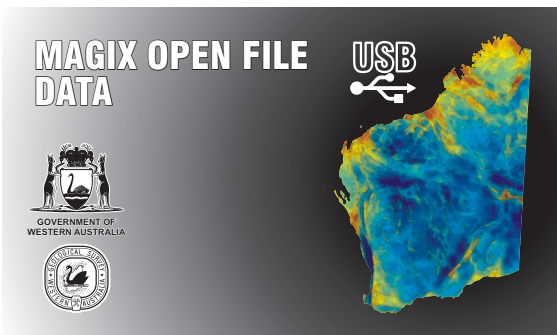


## MAGIX Open File data



This drive contains data from government and private company geophysical surveys in Western Australia. **Please read carefully the Licence Conditions and the Copyright Notice. Your use of the data will be deemed to be your acceptance of the terms therein.**  
**Drive contents and description**

### 1. Private company surveys submitted to the Department

These are airborne survey datasets submitted to the Department of Mines and Petroleum (DMP) by private companies, mostly in compliance with legislative conditions.

For the most part, the data are supplied in the same format in which they were submitted to DMP. They normally include located and gridded data, and may also include logistics reports, images and interpretation material. Individual survey datasets can also be downloaded from the DMP website via the interactive mapping application GeoView.WA. See details and link on <http://www.dmp.wa.gov.au/magix>.

### 2. Surveys commissioned by GSWA or Geoscience Australia

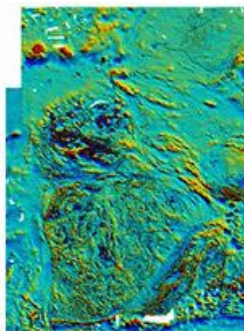
These datasets contain grids and geo-referenced images from regional GSWA or Geoscience Australia airborne and ground gravity surveys. The gravity datasets also contain point-located („vector“) data. Grids are in ERDAS ER Mapper format; images are in the form of ECW files.

Individual datasets can also be downloaded from the DMP website from the [Geophysics Archive](#) page.

The point-located data and grids from individual surveys can be downloaded free of charge from the National [Geophysical Archive Data Delivery System](#) (GADDS) hosted by [Geoscience Australia](#).

### 3. State-wide compilations of government and company surveys

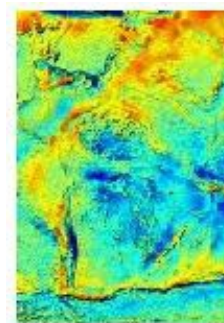
These are grids and geo-referenced images of compilations of merged government and selected non-confidential company survey data. Individual images can also be downloaded from the DMP website from the [Geophysics Archive](#) page.



Total magnetic intensity



Ternary radiometrics



Bouguer gravity

## MAGIX Open File data

Product available from First Floor counter, Mineral House, 100 Plain St, East Perth, WA 6004, AUSTRALIA. Or ordered through: [www.dmp.wa.gov.au/ebookshop](http://www.dmp.wa.gov.au/ebookshop)

Enquiries to Email: [gsd.dda@dmp.wa.gov.au](mailto:gsd.dda@dmp.wa.gov.au); Phone: +61 8 9222 3459; Fax: +61 8 9222 3444.

Cost: See eBookshop for pricing