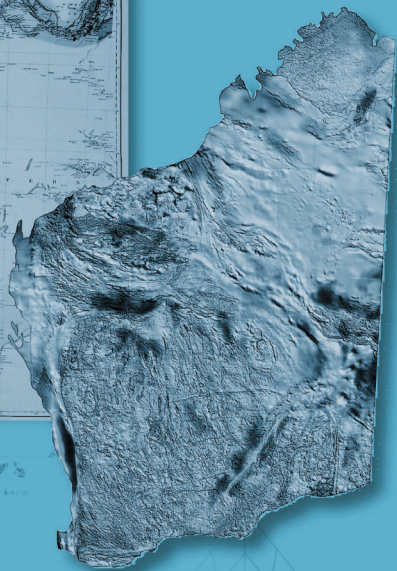
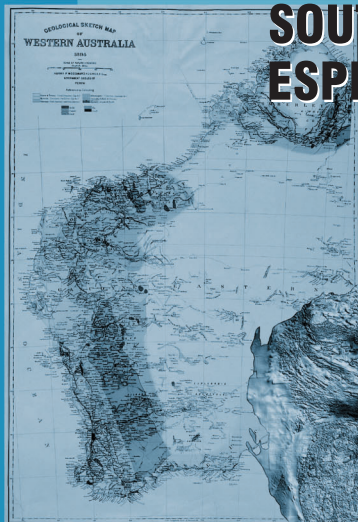


**GSWA RECORD
2002/3**

GEOLOGY AND MINERAL RESOURCES OF THE SOUTHERN CROSS – ESPERANCE REGION



Department of
Mineral and Petroleum Resources

Geological Survey of
Western Australia



GEOLOGY AND MINERAL RESOURCES OF THE SOUTHERN CROSS – ESPERANCE REGION

GSWA RECORD 2002/3

Data supplied in ArcInfo, ArcView, and MapInfo formats
Self-loading ArcExplorer viewing software included on this disk

- 1:500 000 solid geology
- 1:2 500 000 tectonic units
- Magnetic (TMI) and gravity images
- Mines, mineral deposits, prospects, and occurrences
- Mining Act tenements and Form 5 expenditure
- Topographic and cultural data



GIS by ESRI

The information on this disk remains the property of the Western Australian Department of Mineral and Petroleum Resources and is covered by Crown copyright. Copying or on-selling of these data without prior written permission of the Department of Mineral and Petroleum Resources will be seen as a breach of copyright.

June
2002



Geological Survey of Western Australia
100 Plain Street East Perth 6004 Western Australia
Phone: +61 8 9222 3168 Facsimile: +61 8 9222 3633
Home page: <http://www.mpr.wa.gov.au>

Geology and mineral resources of the Southern Cross – Esperance region

Product available from First Floor counter, Mineral House, 100 Plain St, East Perth, WA 6004, AUSTRALIA. Or ordered through: www.doir.wa.gov.au/ebookshop

Enquiries to Email: gsd.dda@doir.wa.gov.au; Phone: +61 8 9222 3459; Fax: +61 8 9222 3444.

Cost: \$55 [inc. GST]