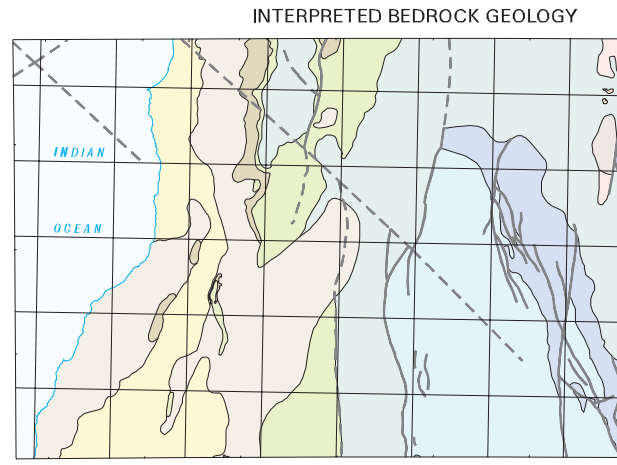


COMPANY PROJECTS WITH SURFACE
GEOCHEMISTRY DATA IN OPEN-FILE
REPORTS (at November 1999)

Project period reported within
(Various colour shades used for ease of
project identification)

- 1966 - 1970
- 1971 - 1975
- 1976 - 1980
- 1981 - 1985
- 1986 - 1990
- 1991 - 1997

Number within project area is a database ID number
(see Appendix 2 of the Explanatory Notes)



Geological Interpretation after Myers and Hosking (1988)

SCALE 1:2 000 000

- LEGEND
- PALEOZOIC QUATERNARY
- PERMIAN: BURGESS CALCARINITE: shoville, mallee, and coastal alluvial deposits; includes coastal lake deposits; commonly calcareous and gypsiferous.
 - PERMIAN: LAMONT SANDSTONE and TRILLIA LIMESTONE: marine limestone, and minor marine and continental sandstone.
 - PERMIAN: CARADARA CALCARINITE, GRALIA CALCARINITE, and MELBESLEIGH SANDSTONE: marine limestone and sandstone, with minor alluvium and basal gravels.
 - PERMIAN: TOODONGA CALCARINITE, KOROJON CALCARINITE, and MIRA FORMATION: marine limestone, chalk, marl, and gneiss; dominantly calcareous pelagic deposits.
 - PERMIAN: WARRING GROUP: Marine and coastal shale, siltstone, and radiolite; dominantly siliceous pelagic deposits with basal sandstone and conglomerate.
 - PERMIAN: WARRING GROUP: Marine and continental siltstone, shale, and sandstone.
 - PERMIAN: LYONS GROUP and CALLYTHARIA FORMATION: Marine and continental siltstone, shale, sandstone, and limestone; glacially influenced.
 - PERMIAN: Marine to continental limestone, dolomite, sandstone, siltstone, shale, and conglomerate.
 - PERMIAN: Dolomite silt.
 - PERMIAN: Edmund Group: Sandstone, siltstone, shale, dolomite, and chert; intruded by dolerite dykes and sills.
 - PERMIAN: Gossyne Complex: Gneiss, granite, and pegmatite; includes minor dolerite and gabbro.
 - PERMIAN: Schist, migmatite, gneiss, gabbro, quartzite, and minor calc-alkaline rock, marble, and amphibolite (Mesozoic Metamorphic Suite).
- SYMBOLS
- Geological boundary
 - Fault, reported
 - Fault, concealed or inferred

Edited by N. Telford, K. Greenberg, and B. Loan

Cartography by M. Wierle

Topography from Australian Surveying and Land Information Group, and Department of Land Administration Sheets SF 50-13 and part SF 49-16

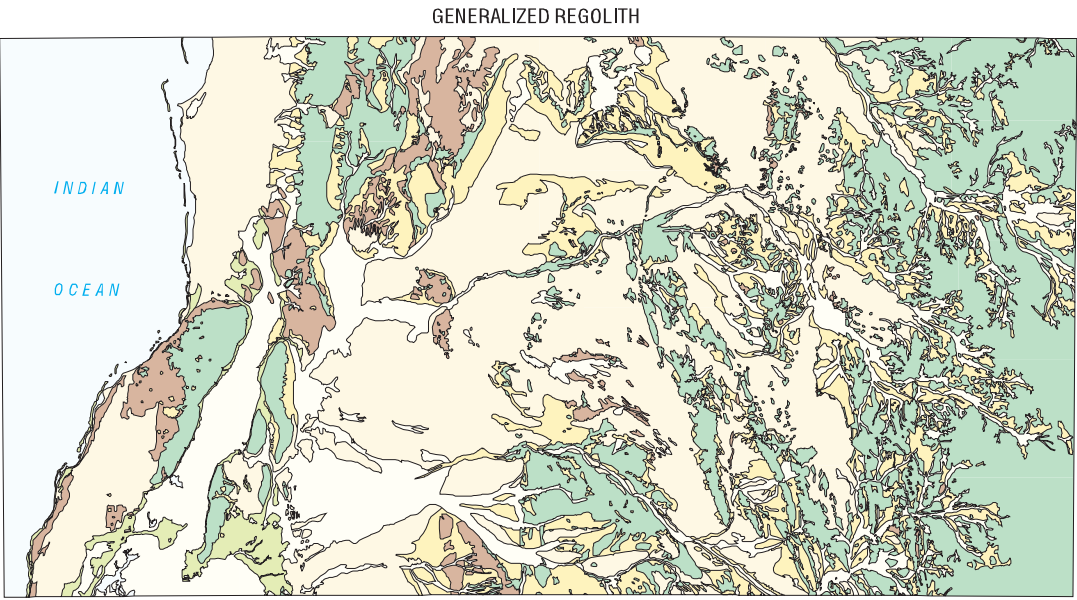
This map was compiled and produced using a Geographic Information System (GIS), and the data are available in digital form.

Published by the Geological Survey of Western Australia. Copies of this map, or extracts of the data, are available from the Information Centre, Department of Minerals and Energy, 100 Plain Street, East Perth, W.A., 6004. Phone (08) 9222 3458; Fax (08) 9222 3444

Compiled by S. A. McGinness 1999

Compiled from the Geological Survey of Western Australia SPINEX database and open-file mineral exploration reports

The recommended reference for this map is:
McGinness, S. A., 2001. Company projects with surface geochemistry data in open-file reports (at November 1999). Winning Pool - Minilya, W.A. Sheet SF 50-13 and part sheet SF 49-16, in Geochemical mapping of the Winning Pool - Minilya 1:250 000 sheets.
by S. A. McGinness and S. A. McGinness. Western Australia Geological Survey, 1:250 000 Regolith Geochemistry Series Explanatory Notes, Plate 2



SCALE 1:1 000 000

SCALE 1:250 000

UNIVERSAL TRANSVERSE MERCATOR PROJECTION
HORIZONTAL DATUM: GEOCENTRIC DATUM OF AUSTRALIA 1994
VERTICAL DATUM: AUSTRALIAN HEIGHT DATUM
Grid lines indicate 20 000 metre interval of the Map Grid Australia, Zone 50

The Map Grid Australia (MGA) is based on the Geocentric Datum of Australia 1994 (GDA94)
GDA94 positions are compatible within one metre of the datum WGS84 positions



SHEET INDEX

MINILYA SF 50-12	MINILYA SF 50-13	MINILYA SF 50-14
MINILYA SF 50-15	WINNING POOL SF 50-16	EDWARDS SF 50-17
EDWARDS SF 50-18	KEMPEL PARK SF 50-19	MOUNT PHILLIPS SF 50-20

INDEX TO 1:100 000 MAP SHEETS

MINILYA 1:100 000	WINNING POOL 1:100 000	EDWARDS 1:100 000
MINILYA 1:100 000	WINNING POOL 1:100 000	EDWARDS 1:100 000
MINILYA 1:100 000	WINNING POOL 1:100 000	EDWARDS 1:100 000



DEPARTMENT OF MINERALS
AND ENERGY
L. C. HANFORD, DIRECTOR GENERAL



GOVERNMENT OF WESTERN AUSTRALIA
100 NORMANBY ROAD, W.A.
SENIOR MINISTER



GEOLOGICAL SURVEY OF
WESTERN AUSTRALIA
TIM CAMPBELL, DIRECTOR

COMPANY PROJECTS WITH SURFACE
GEOCHEMISTRY DATA IN OPEN-FILE
REPORTS (at November 1999)

REGOLITH GEOCHEMISTRY SERIES
WINNING POOL - MINILYA
SHEET SF 50-13, part SF 49-16
FIRST EDITION 2001
© Western Australia 2001

WARNING: Inks are water soluble and will
fade with prolonged exposure to light