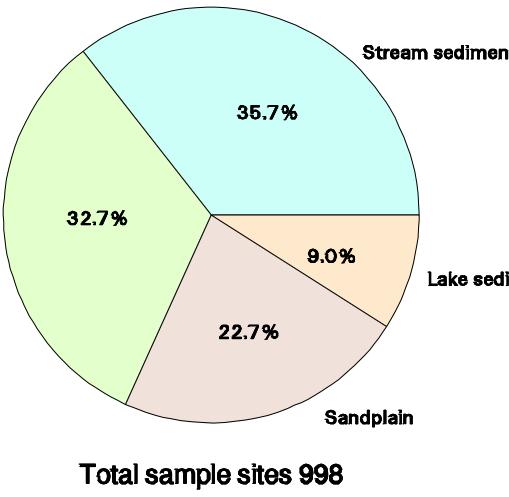


## SAMPLE LOCATIONS

### Sample point reference

- 167299 Stream sediment
- 166604 Sheetwash
- 166863 Lake sediment
- 166858 Sandplain



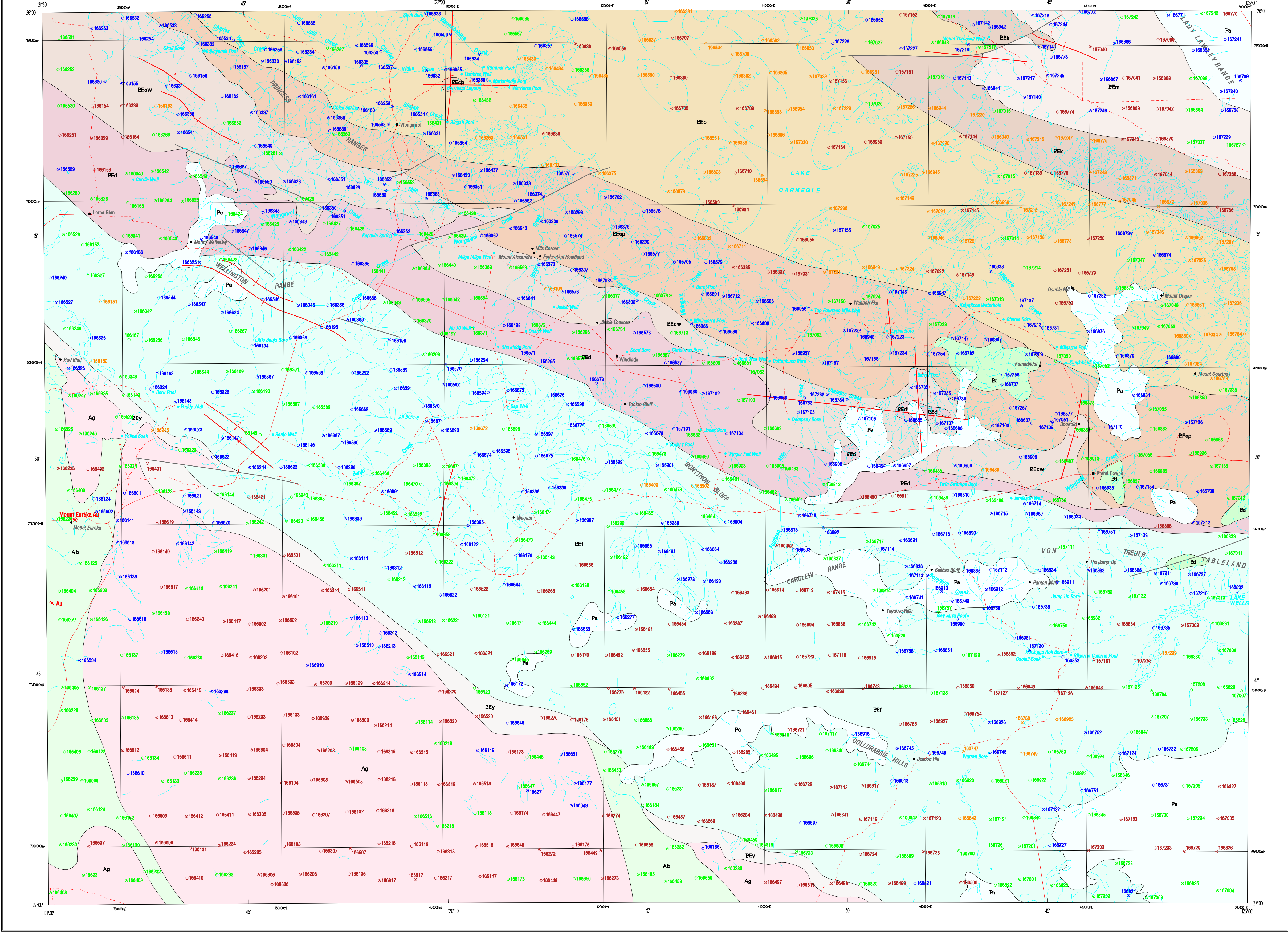
### GEOLOGICAL INTERPRETATION

- PHANEROZOIC**
- PERMIAN**
- Pa PATERSON FORMATION: fluvial or fluvio-glacial sandstone, conglomerate, and siltstone
  - Bt Dolerite
- PROTEROZOIC**
- Euraheedy Group**
- BEm MULGARRA SANDSTONE: quartz sandstone; with minor shale and limestone
  - BEk KULELE LIMESTONE: stromatolitic limestone, calcarenite, and mudstone; minor sandstone
  - BEo WONGAWOL FORMATION: very fine-grained sandstone, shale, and minor carbonate-rich rocks
  - BEsp CHIALI FORMATION
  - BEcw Princess Ranges Member: quartz arenite with minor siltstone
  - BEw Windiweria Member: sandstone, siltstone, and shale; locally glauconitic basal conglomerate
  - BEd WINDIDDA FORMATION: limestone, shale, and chert; stromatolitic in part
  - BEf FRERE FORMATION: granular iron-formation, hematitic shale, chert, and siltstone
  - BEY YELMA FORMATION: sandstone and shale; minor chert, and stromatolitic carbonate
- ARCHAEOAN**
- Ag Granitoid rock
  - Ab Greenstone: basalt, dolerite, ultramafic rock, metamorphosed sedimentary rocks, and felsic volcanic rock

- Geological boundary
- Anticline
- Fault
- Syncline

### SYMBOLS

- Minor road
- Track
- Watercourse
- Lake
- Pool, soak, spring bore, well
- Windidda
- Double Hill
- Mount Eureka
- Homestead
- Locality
- Mine
- Prospect
- Gold



Edited by N. Tetlow and G. Loan

Cartography by G. Jones

Topography from Australian Surveying and Land Information Group and modified from geological field survey (1986)

This map was compiled and produced using a Geographic Information System (ArcInfo), and the data are available in digital form

Published by the Geological Survey of Western Australia. Copies of this map, or extracts of the data, are available from the Information Centre, Department of Minerals and Energy, 100 Plain Street, East Perth, W. A., 6004. Phone (08) 9222 3450, Fax (08) 9222 3444

Compiled by K. J. Pye 1999

Sampling by: S. Beesjou, E. Bonanquet, J. Hansen, E. Mitouli, J. Moore, and N. Nassef

Total sample sites: 998; 328 sheetwash, 355 stream sediment, 227 sandplain, and 90 lake sediment

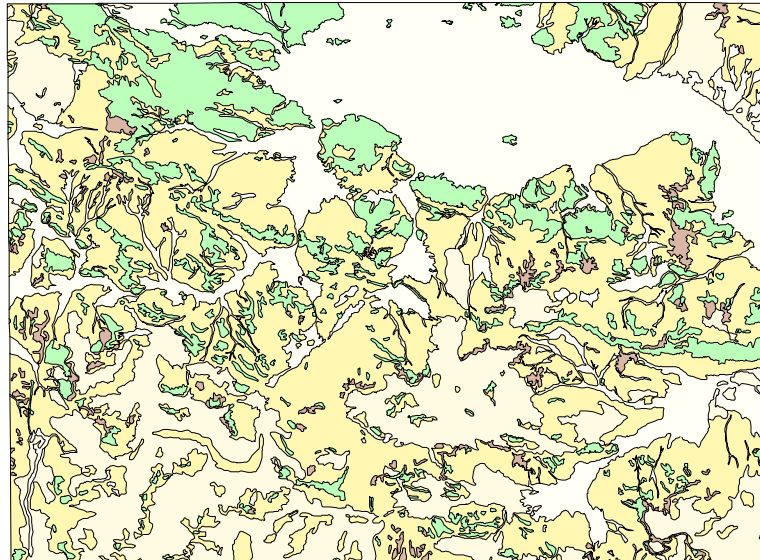
Analyst: Geosystems Laboratory Services

Minimum sample size: 1.5 kg  
Fraction of sample analysed: >4.5mm <2mm

Geological interpretation after Bunting (1980, 1986), Myers and Hooding (1988), Pirajno (1988), and Jones et al. (2000)

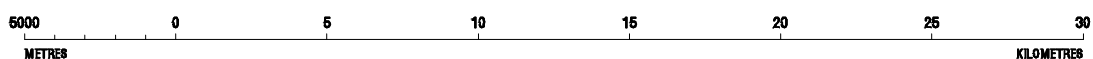
The recommended reference for this map is:  
PYE, K. J., 2000, Sample locations, Kingston, W. A. sheet SG 51-10, in: Geological mapping of the Kingston 1:250 000 sheet by K. J. PYE, P. A. MORRIS, and S. A. MCGUINNESS. Western Australia Geological Survey, 1:250 000 Regolith Geochemistry Series Explanatory Notes, Plate 1

### GENERALIZED REGOLITH



SCALE 1:1 500 000

SCALE 1:250 000



UNIVERSAL TRANSVERSE MERCATOR PROJECTION  
HORIZONTAL DATUM: GEOCENTRIC DATUM OF AUSTRALIA 1994  
VERTICAL DATUM: AUSTRALIAN HEIGHT DATUM  
Grid lines indicate 20 000 metre interval of the Map Grid Australia, Zone 51

The Map Grid Australia (MGA) is based on the Geocentric Datum of Australia 1994 (GDA94)  
GDA94 positions are compatible within one metre of the datum WG84 positions

GDA



### SHEET INDEX

MANUEL SG 51-4	STANLEY SG 51-5	HERBERT SG 51-7
WILUNA SG 51-8	KINGSTON SG 51-10	ROBERT SG 51-11
BIR RAMUEL SG 51-12	QUENTON SG 51-14	THURSBELL SG 51-15

### INDEX TO 1:100 000 MAP SHEETS

WONGAWOL 344	WINDIDDA 344	CARNEGIE 344
YELMA 344	COLLARBIE 344	VON TREUER 344



DEPARTMENT OF MINERALS  
AND ENERGY  
L. C. RANFORD, DIRECTOR GENERAL



GOVERNMENT OF WESTERN AUSTRALIA  
Hon. NORMAN MOORE, M.L.C.



GEOLOGICAL SURVEY OF  
WESTERN AUSTRALIA  
DAVID BLIGHT, DIRECTOR

## SAMPLE LOCATIONS

REGOLITH GEOCHEMISTRY SERIES

KINGSTON

SHEET SG 51-10

FIRST EDITION 2000

© Western Australia 2000

WARNING: Inks are water soluble and will fade with prolonged exposure to light