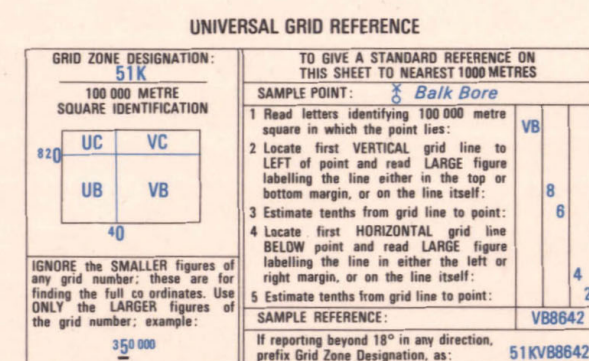
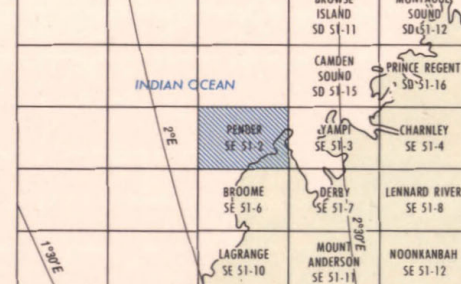


Published by the Bureau of Mineral Resources, Geology and Geophysics,
Department of National Development and Energy. Prepared in collaboration with the
Geological Survey of Western Australia, issued under the joint authority of
the Minister for National Development and Energy and the Minister for Mines,
Western Australia. Base map supplied by the Division of National
Mapping, topographic information shown is correct to 1979
© Commonwealth of Australia 1983

INDEX TO ADJOINING SHEETS

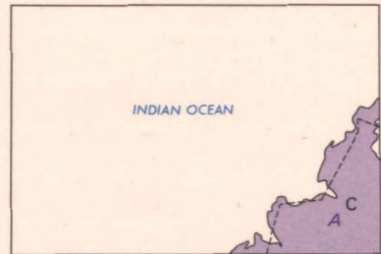
Showing Magnetic Declination 1980



SCALE 1:250 000

BLUE NUMBERED LINES ARE 10 000 METRE INTERVALS OF THE AUSTRALIAN MAP GRID, ZONE 51
TRANSVERSE MERCATOR PROJECTION

RELIABILITY DIAGRAM



Geology C General reconnaissance; few traverses,
mainly airphoto interpretation

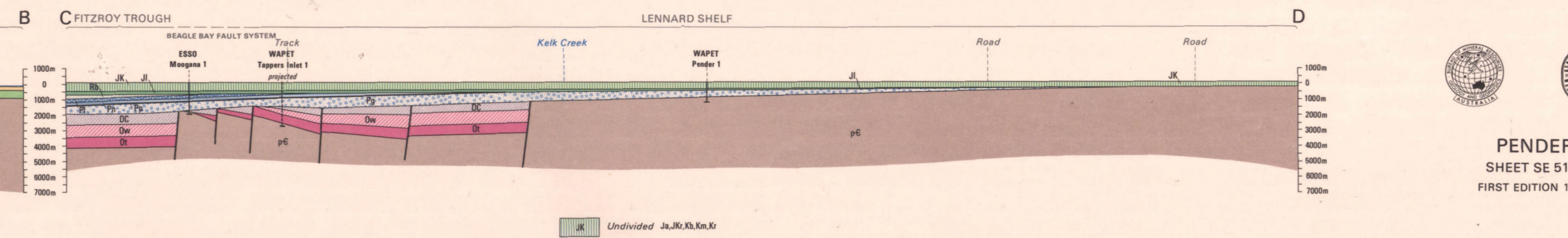
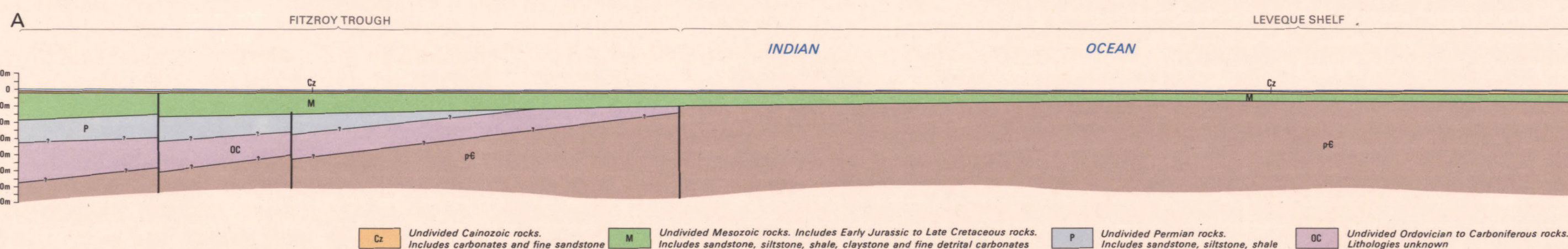
Helicopter traverse
Gravity A Detailed survey

Geology 1948 by D.J. Guppy, A.W. Under BMR
1950 by R.O. Brummett, BMR
1977 by G.L. Johnson, R.A. Turner BMR;
1977 by G.L. Johnson, R.A. Turner BMR;
Compiled 1978 by D.L. Guppy, G.W. Guppy
Edited 1981 by J. Mitchell, A.S. Mikolajczak
Geology 1981 by J. Mitchell, A.S. Mikolajczak
Compiled 1981 by J. Mitchell, A.S. Mikolajczak
Design by Cartography Section, BMR
Drawn by Capital Drafting Consultants Pty Ltd
Printed by Mercury-Walch, Hobart, Australia

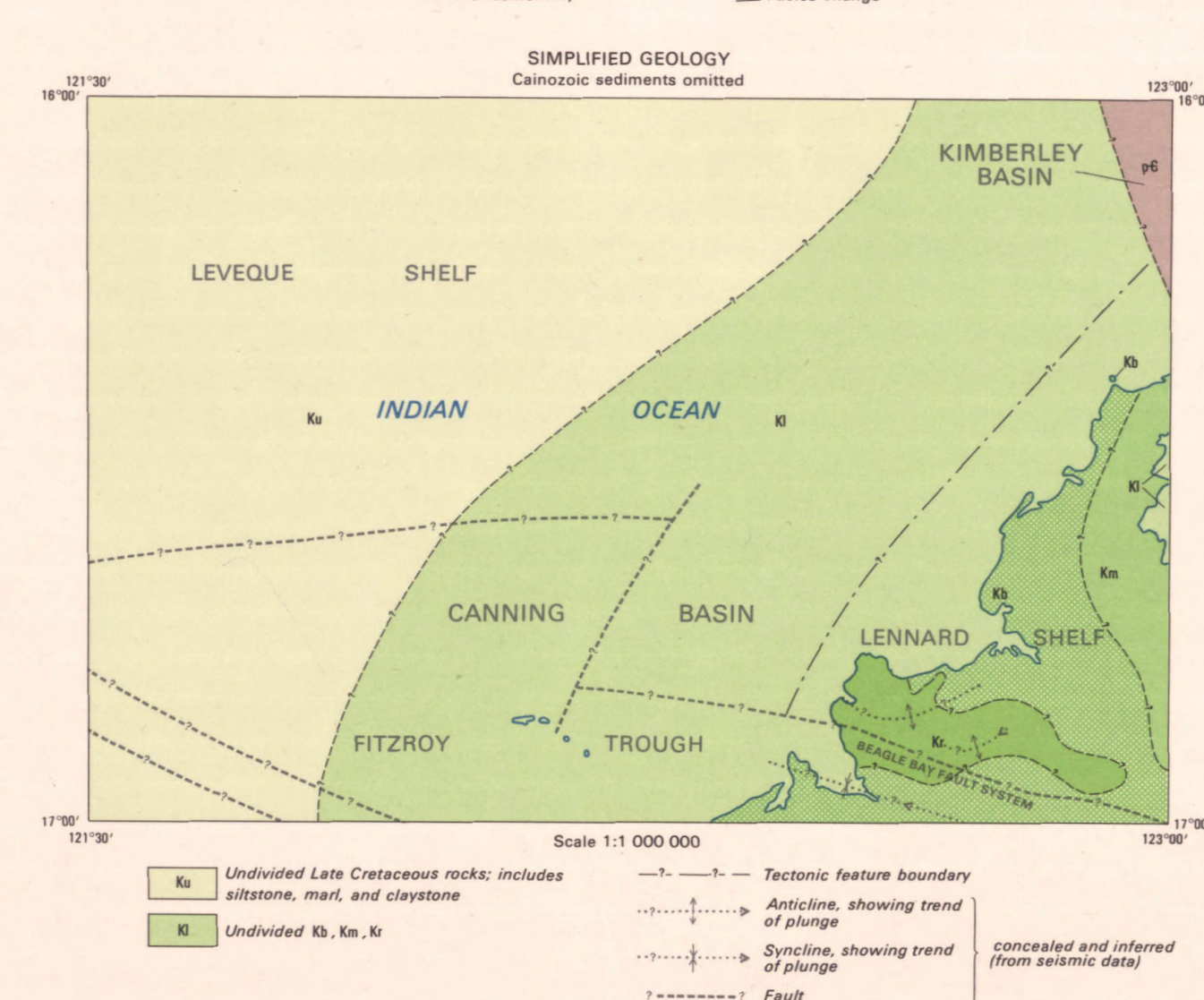
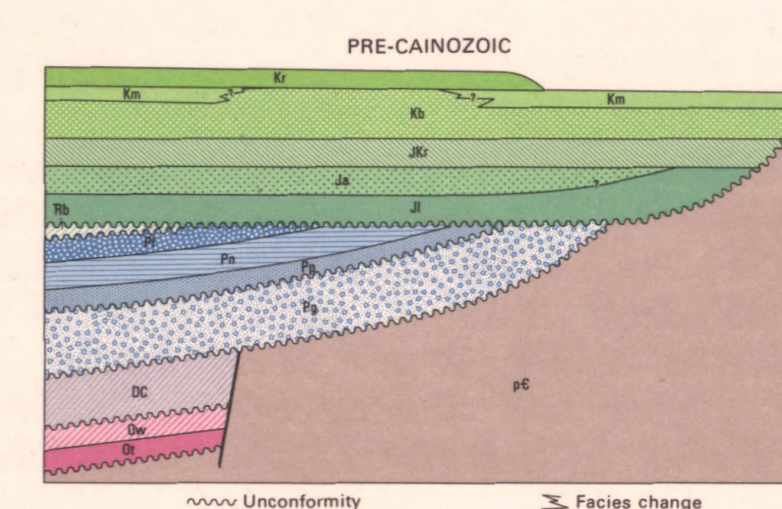
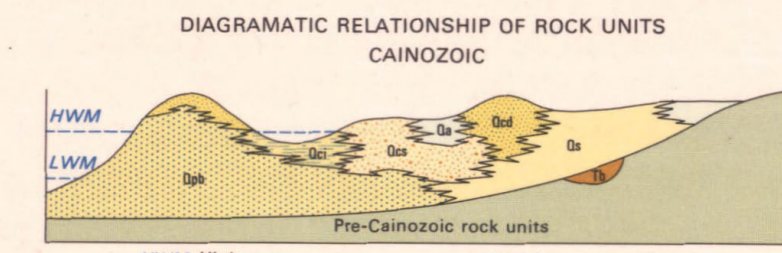
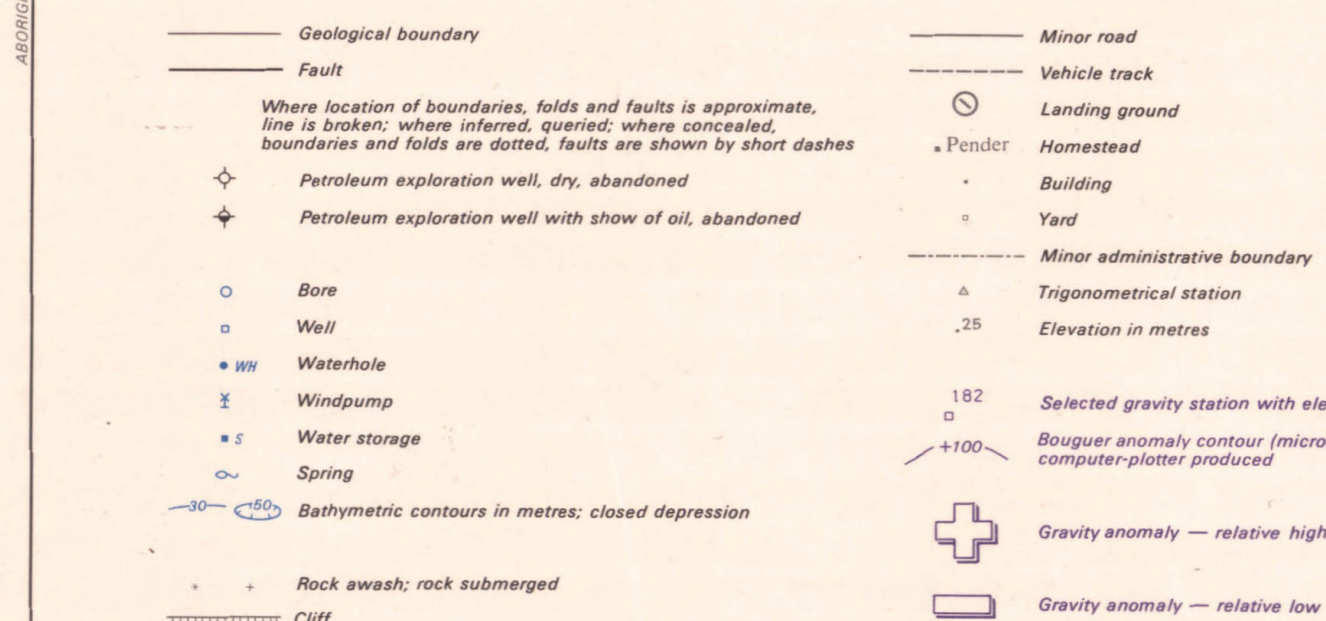


SCHEMATIC SECTIONS

Scale 1:1



CENOZOIC			
QUATERNARY	Qa	Sand, silt, clay; minor gravel; alluvial and lacustrine	
	Qb	Sand, silt; minor gravel; mixed alluvial and aeolian	
	Qc	Clay, silt, sand; minor salt; supratidal mud flat	
	Qd	Silty clay, black organic clay; tidal flat and mangrove swamp	
	Qe	Calcareous sand, partly oolitic; coastal aeolian dunes (includes reworked Qb)	
TERTIARY?	Bosut Formation	Qa	Calcareous and quartzose sandstone, fine to coarse; calcillite, oolite; cross-bedded in part; coastal
	Borda Sandstone	Tb	Sandstone, fine; minor mudstone; basal conglomerate; fluvial?
EARLY CRETACEOUS	Emeriau Sandstone	Kr	Sandstone, poorly sorted; minor conglomerate; cross-bedded; fluvial to deltaic
	Melligo Sandstone	Km	Sandstone, fine to medium, well-sorted, pebbly in places; laminated to thin-bedded; silicified in part; beach
	Broome Sandstone	Kb	Sandstone, fine to very coarse; mudstone in part; minor conglomerate; ripple-marked, cross-bedded; bioturbated in part; plant fossils; shallow marine
LATE JURASSIC TO EARLY CRETACEOUS?	Jarlemal Siltstone	Jk	Siltstone, claystone, sandstone; marine
	Alexander Formation	Ja	Sandstone, fine to coarse; interbedded mudstone; shallow marine
LATE JURASSIC	Wallal Sandstone	Wl	Sandstone; minor siltstone, conglomerate, lignite; continental to shallow marine
	Blina Shale	Bs	Mudstone, sandy in places; shallow marine
EARLY TRIASSIC	Liveringa Group	Lt	Sandstone, mudstone; minor limestone, conglomerate, coal; shallow marine to deltaic
	Noonkanbah Formation	Nk	Mudstone, calcareous; fine sandstone, limestone interbeds; marine
EARLY PERMIAN	Poole Sandstone	Ps	Sandstone, very fine to fine; interbedded mudstone; minor limestone at base; shallow marine to lagoonal
	Grant Group	Gt	Sandstone, fine to coarse; mudstone; minor conglomerate; marine, partly glacial
LATE CARBONIFEROUS TO EARLY PERMIAN	Willars Formation	Wl	Limestone, dolomite, shale, siltstone, fine sandstone; marine
	Nambert Formation	Nb	Shale, grey to green; interbedded limestone and fine sandstone; shallow marine
MIDDLE DEVONIAN TO EARLY CARBONIFEROUS?			
EARLY ORDOVICIAN			
PRECAMBRIAN		Pc	Igneous, metamorphic, and sedimentary rocks



PENDER
SHEET SE 51-2
FIRST EDITION 1983

REPRINT 11/10/87