

#### Iron Formation

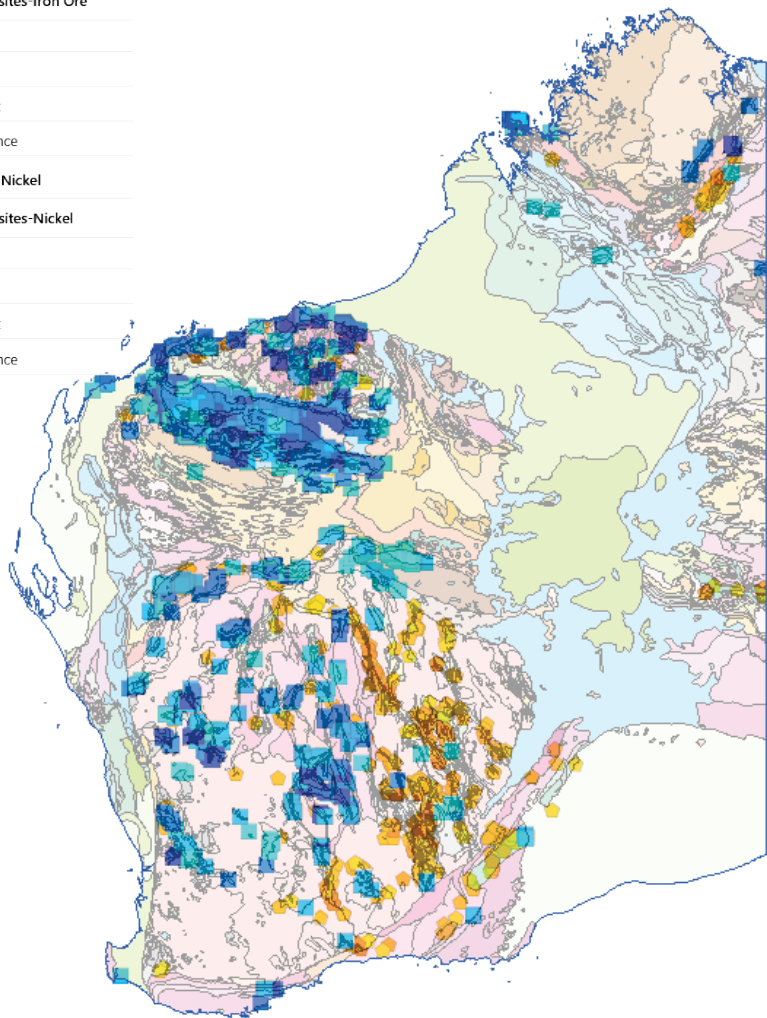
##### Mineralization sites-Iron Ore

- Mine
- Deposit
- Prospect
- Occurrence

#### Komatiite Hosted Nickel

##### Mineralization sites-Nickel

- Mine
- Deposit
- Prospect
- Occurrence



## Mineral Systems Atlas, 2019

The **Mineral Systems Atlas** is a GIS-based platform that delivers tailored data layers relevant to Western Australian mineral deposits. Layer content is defined using a Mineral Systems Analysis approach, and is derived from primary Geological Survey of Western Australia data.

The data are delivered through an interactive, map-based, online system that allows various data and information to be combined according to the user's needs. Currently, datasets are loaded for komatiite-hosted nickel systems and iron formations across Western Australia. Further mineral systems will be added as they become available.

The Mineral Systems Atlas is complemented by the Mineral Systems Atlas Guide, where notice of updates and addition of new mineral systems will be provided. The Guide documents all aspects of the creation of the constituent map layers, and the relationships between primary and derived data.

#### Layers featured:

**Topography & Index**

**Primary Data Layers**

**Komatiite Hosted Nickel**

**Iron Formation**

## Mineral Systems Atlas, 2019

Enquiries to Email: [gsd.dda@dmirs.wa.gov.au](mailto:gsd.dda@dmirs.wa.gov.au); Phone: +61 8 9222 3459; Fax: +61 8 9222 3444.

Free (online): Mineral Systems Atlas: <[www.dmp.wa.gov.au/mineralsystems atlas](http://www.dmp.wa.gov.au/mineralsystems atlas)>, Mineral Systems Atlas Guide: <[www.dmp.wa.gov.au/msa](http://www.dmp.wa.gov.au/msa)>