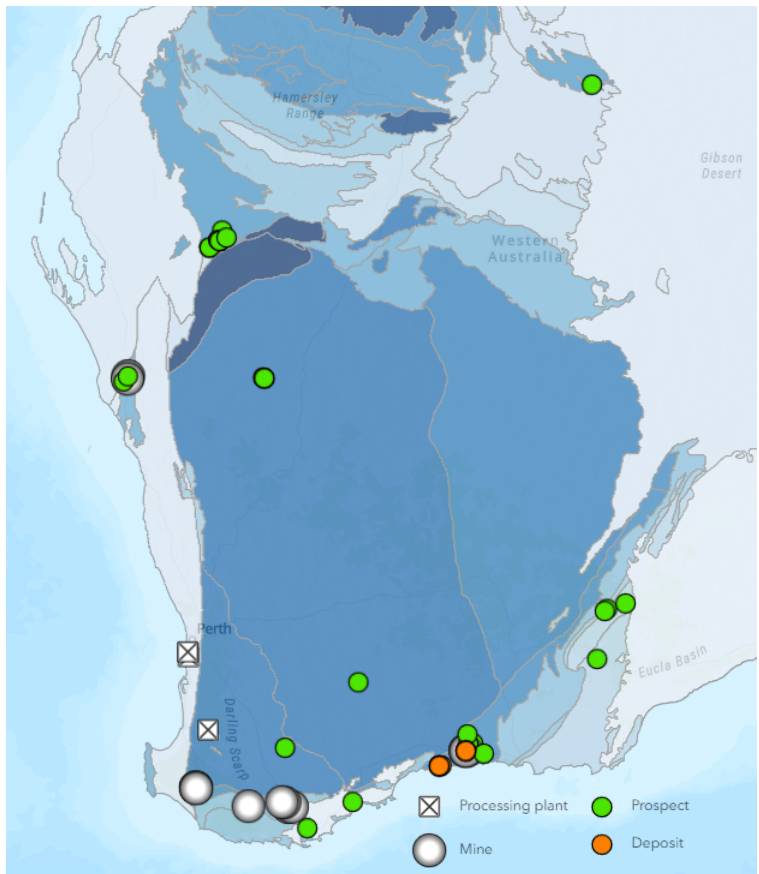




▲ Graphite has many uses in addition to pencils



▲ Graphite mines, deposits and processing plants, Western Australia

Graphite: Western Australia's unsung resource

Enquiries to publications@dmirs.wa.gov.au

Free (online): <https://storymaps.arcgis.com/stories/9eac554c57e34d39b80560e89aa6751b>

Graphite

This StoryMap is the newest release in the series published by the Geological Survey of Western Australia (GSWA). The content is based on GSWA Mineral Resources Bulletin 26 Graphite in Western Australia but includes updated information, graphics, current trends and statistics.

The StoryMap contains the following sections:

- Graphite's versatility
- Natural graphite
- Synthetic graphite
- Deposit types
- Graphite prospectivity in Western Australia
- Applications
- Global distribution and production
- How will demand impact Western Australia?

Graphite's crystal form makes it an excellent conductor of electricity and heat, immune to attack from most acids, and an extremely good refractory material. These features have led to its place on the world's list of critical minerals.

Advances in technology and evolution of industries are likely to increase the global demand for graphite. Many analysts forecast demand for natural graphite to grow to around 6.3 million tonnes per annum, an increase of about a 700% on today's production. They predict that there will be a supply deficit from about 2024–25 up to 2030.

This represents huge potential for Western Australian projects at feasibility and exploration stages.



▲ Graphene, termed 'the next wonder material', comprises a series of one-atom-thick sheets of graphite



Department of Energy, Mines,
Industry Regulation and Safety

Geological Survey of
Western Australia

