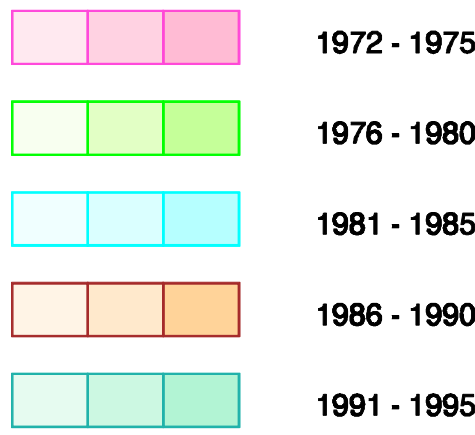


# COMPANY PROJECTS WITH SURFACE GEOCHEMISTRY DATA IN OPEN-FILE REPORTS (at March 1999)

Project period reported within  
(Various colour shades used for ease of project identification)

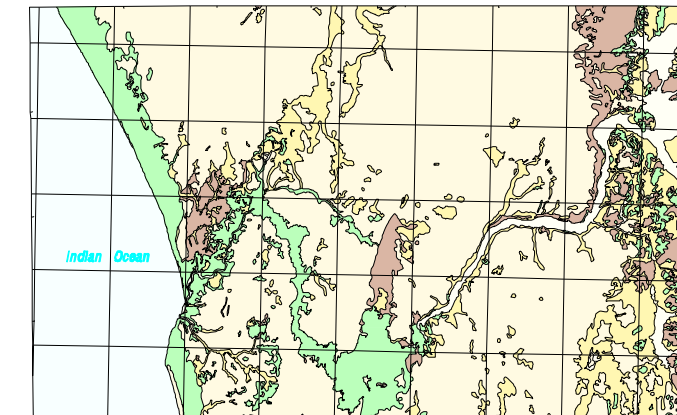


Number within project area is a database ID number (see Appendix 3 of the Explanatory Notes)

## SYMBOLS

- |             |                         |
|-------------|-------------------------|
| Highway     | Mary Springs Mine       |
| Formed road | Kalbarri Chalk Prospect |
| Track       | Lake Narraminy Openpit  |
| Watercourse | Cy Clay                 |
| Lake        | Cu Copper               |
| Yandi       | Pb Lead                 |
| Red Hill    | Lst Limestone           |
|             | Zn Zinc                 |

## GENERALIZED REGOLITH



# COMPANY PROJECTS WITH SURFACE GEOCHEMISTRY IN OPEN-FILE REPORTS (at March 1999)

## REGOLITH GEOCHEMISTRY SERIES

### AJANA

SHEET SG 50-13, part SG 49-16

FIRST EDITION 2000

© Western Australia 2000

Edited by D. Ferdinando, K. Greenberg, and C. Brien  
Cartography by M. Violett, and L. Kukul

Topography from Australian Surveying and Land Information Group, and Department of Land Administration Sheet SG 50-13

This map was compiled and produced using a Geographic Information System (Geotitles), and the data are available in digital form

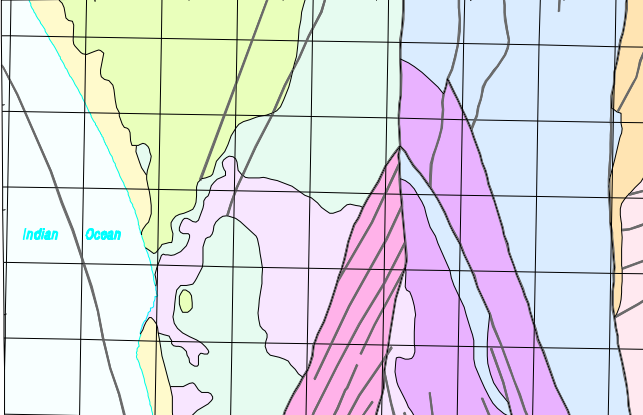
Published by the Geological Survey of Western Australia. Copies of this map, or extracts of the data, are available from the Information Centre, Department of Minerals and Energy, 100 Plain Street, East Perth, W.A., 6004. Phone (08) 9222 3458, Fax (08) 9222 3444

Compiled by S. A. McGuinness 1999

Compiled from open-file mineral exploration reports held by the Geological Survey of Western Australia

The recommended reference for this map is: MCGUINNESS, S. A., 2000, Company projects with surface geochemistry data in open-file reports (at March 1999), Ajana, W.A. Sheet SG 50-13, part SG 49-16, in Geoscientific mapping of the Ajana 1:250 000 sheet by A. J. SANDERS and S. A. MCGUINNESS, Western Australia Geological Survey, 1:250 000 Regolith Geochemistry Series Explanatory Notes, Plate 3

## SIMPLIFIED GEOLOGICAL INTERPRETATION



- |                               |  |
|-------------------------------|--|
| UPPER CARBONIFEROUS - PERMIAN | TIMBALA LIMESTONE: shewing and coastal eolian deposits, carbonaceous sedimentary rock  |
| UPPER CARBONIFEROUS - PERMIAN | TOOLONGA CALCULITE: marine limestone, chert, marl, and greenward, dominantly calcareous pelagic deposits                                   |
| UPPER CARBONIFEROUS - PERMIAN | Winning Group: Marine and coastal shales, siltstones, greenward, and radiolite; dominantly siliceous pelagic deposits, and basal sandstone |
| UPPER CARBONIFEROUS - PERMIAN | Lynne Group / NANGERTY FORMATION: Marine and continental siltstone, shale, sandstone, and limestone; glacially influenced                  |
| UPPER CARBONIFEROUS - PERMIAN | Continental to marine sandstone and minor conglomerate   |
| UPPER CARBONIFEROUS - PERMIAN | TUMBLAGOODA SANDSTONE: continental and coastal sandstone   |
| UPPER CARBONIFEROUS - PERMIAN | Northington Complex: Garnet granulite, quartz-feldspar gneiss, amphibolite, and schist   |
| UPPER CARBONIFEROUS - PERMIAN | Redgum Group and MILLING FORMATION: Siltstone, shale, sandstone, and dolomite  |
| UPPER CARBONIFEROUS - PERMIAN | Yilgarn Craton: Granite and gneiss with local amphibolite and ultramafic rock  |
| UPPER CARBONIFEROUS - PERMIAN | Geological boundary  |
| UPPER CARBONIFEROUS - PERMIAN | Fault  |

SCALE 1:250 000

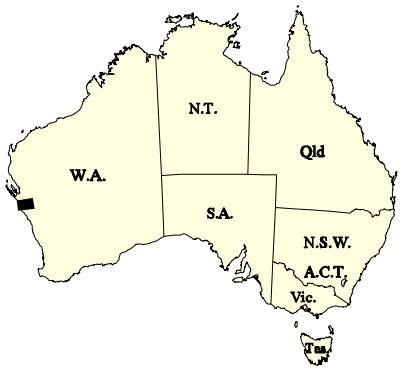


## TRANSVERSE MERCATOR PROJECTION

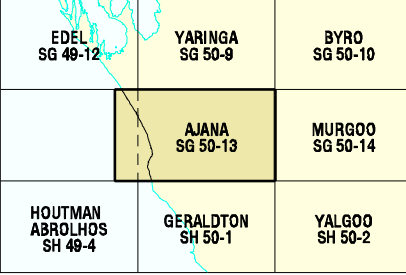
HORIZONTAL DATUM: AUSTRALIAN GEODETIC DATUM 1984

VERTICAL DATUM: AUSTRALIAN HEIGHT DATUM

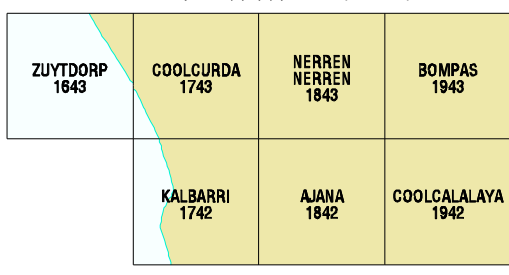
Grid lines indicate 20 000 metre interval of the Australian Map Grid Zone 50



## SHEET INDEX



## INDEX TO 1:100 000 MAP SHEETS



WARNING: Inks are water soluble and will fade with prolonged exposure to light