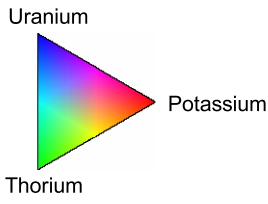
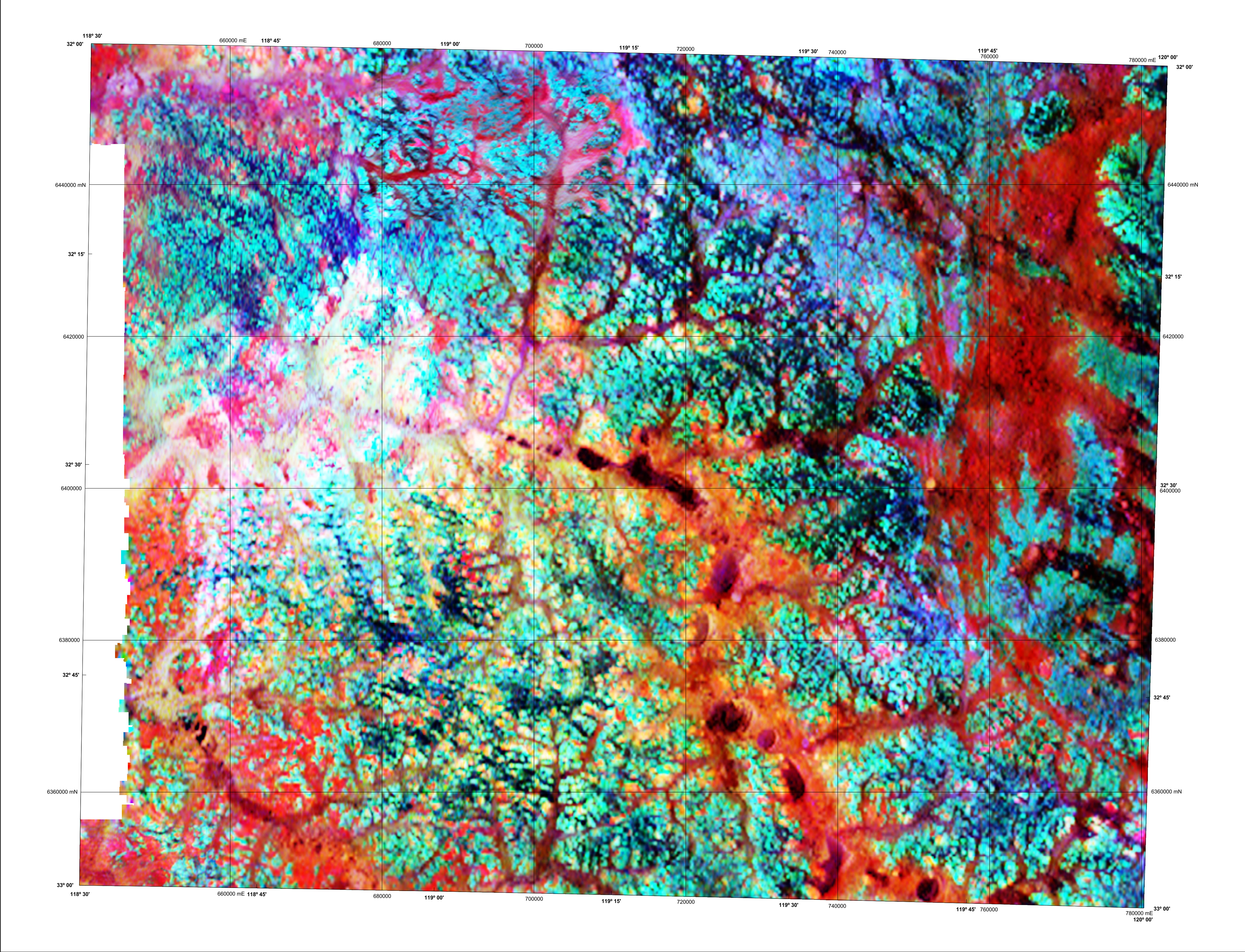


HYDEN

GEOLOGICAL SURVEY OF WESTERN AUSTRALIA

1:250 000 TERNARY RADIOMETRIC IMAGE

SHEET SI 50-4



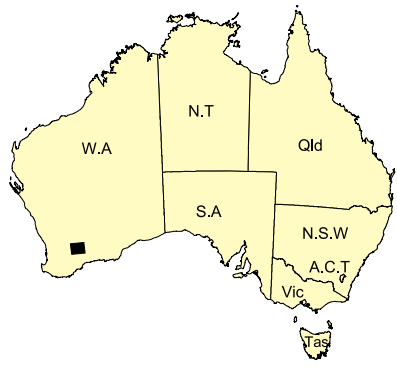
Data acquired in 2005 were merged by Geoscience Australia with private company data, flown between 1993 and 1997. These data now form part of the National Airborne Geophysical Database.

Published by the Geological Survey of Western Australia. Copies are available from the Information Centre, Department of Industry and Resources, 100 Plain Street, East Perth, WA 6004. Telephone (08) 9222 3459, Fax (08) 9222 3444, www.doir.wa.gov.au

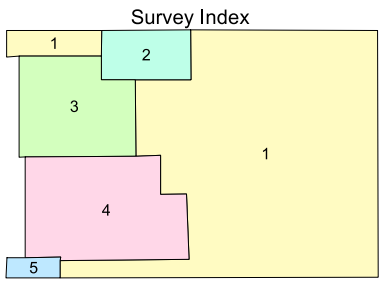
Secondary data processing R. Franklin  
Image processing J. H. Watt  
Cartography S. Jefferys  
Geophysical Project Manager S. H. D. Howard

These data are available in digital form from the Sales Centre, Geoscience Australia, GPO Box 378, Canberra, ACT 2601. Telephone (02) 6249 9966, Fax (02) 6249 9982. Digital data are also available for download from Geoscience Australia, www.ga.gov.au/gadds

The recommended reference for this map is:  
GEOLOGICAL SURVEY OF WESTERN AUSTRALIA, 2005, Hyden, W.A. Sheet SI 50-4:  
Western Australia Geological Survey, 1:250 000 Ternary Radiometric Image.



SHEET INDEX		
KELLERDERBIN SI 50-1	SOUTHERN CROSS SI 50-2	BOONABRIN SI 50-3
CORRIKIN SI 50-4	HYDEN SI 50-4	LAKE JOHNSON SI 50-5
DUMBLEYUNG SI 50-7	NEWCASTLE SI 50-6	RAVENSTHORPE SI 50-8



The image is compiled from the five surveys that are listed below, and the areas covered by each are shown on the survey index.  
The grid cell size is 50 m.

Survey ID	Survey name	Flight line spacing	Flight line direction	Ground clearance	Crystal volume	Contractor	Date	Client
1	Southern Cross – Hyden	400 m	90° – 270°	60 m	33.6 litres	UTS	2005	GSWA/GA
2	Gibb Rock	200 m	90° – 270°	40 m	33.6 litres	UTS	1997	Aberfoyle Resources Ltd
3	Hyden North	400 m	90° – 270°	40 m	33.6 litres	Fugro	1997	Aberfoyle Resources Ltd
4	Pingaring	400 m	90° – 270°	60 m	33.6 litres	Kevron	1993	CRA Exploration Pty Ltd
5	Lake Grace	200 m	90° – 270°	60 m	33.6 litres	Kevron	1995	North Ltd



Department of  
Industry and Resources

Geological Survey of  
Western Australia



Australian Government  
Geoscience Australia

NGA

PRODUCT OF THE NATIONAL  
GEOSCIENCE AGREEMENT

SCALE 1:250 000  
0 10 20 30  
Metres Kilometres

UNIVERSAL TRANSVERSE MERCATOR PROJECTION  
HORIZONTAL DATUM: GEODETIC DATUM OF AUSTRALIA  
Grid lines indicate 20 000 metre interval of the Map Grid Australia Zone 50

GDA The Map Grid Australia (MGA) is based on the Geocentric Datum of Australia 1994 (GDA94).  
GDA94 positions are compatible within one metre of the datum WGS84 positions.

GEOLOGICAL SURVEY OF WESTERN AUSTRALIA

TERNARY RADIOMETRIC IMAGE

Potassium, Thorium, Uranium as red, green, blue

HYDEN

SHEET SI 50-4

First Edition 2005

Version 1.0 - June 2005

© Western Australia 2005

WARNING: Inks are water soluble and will  
fade with prolonged exposure to light