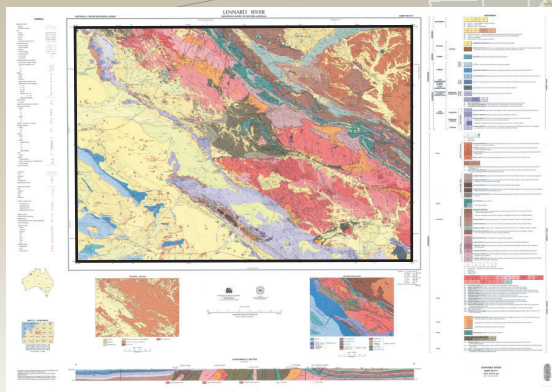


ATLAS OF 1:250 000 GEOLOGICAL SERIES MAP IMAGES WESTERN AUSTRALIA



April 2007 update

Geological Survey of
Western Australia



ATLAS OF 1:250 000 GEOLOGICAL SERIES MAP IMAGES, WESTERN AUSTRALIA

April 2007 update

1:250 000 Digital Image Package

Data are supplied as ESRI shapefiles, ECW images, and MS Access database formats.

Self-loading Atlas Viewer software is included.

Datasets featured:

Geology

- 1:250 000 geological mosaic — Image mosaic of 1:250 000 Geological Map Series covering Western Australia to 31 December 2006
- 1:250 000 Geological Map Series, all latest edition maps to 31 December 2006
- 1:500 000 interpreted bedrock geology

Geophysics

- Magnetic anomaly image of Western Australia

Topography

- WA NATMAP RASTER mosaic 2003 — Image mosaic of 1:250 000 topographic maps over Western Australia
- 1:100 000 townsites
- 1:500 000 roads

Remotely sensed information

- Landsat TM image of Western Australia

The information on this disk remains the property of the Western Australia Department of Industry and Resources and is covered by Crown copyright.

Copying or on-selling of these data without prior written permission of the Department of Industry and Resources will be seen as a breach of copyright.



Atlas Viewer has been designed for the Windows operating system, and has been tested to run on Windows NT4/ME/2000/XP

Geological Survey of Western Australia

100 Plain Street East Perth 6004 Western Australia
Phone: +61 8 9222 3168 Facsimile: +61 8 9222 3633
www.doir.wa.gov.au/gswa

April 2007

ISBN 978-1-74168-092-8

Atlas of 1:250 000 geological series map images, Western Australia, April 2007 update

Product available from First Floor counter, Mineral House, 100 Plain St, East Perth, WA 6004, AUSTRALIA. Or ordered through: www.doir.wa.gov.au/ebookshop

Enquiries to Email: gsd.dda@doir.wa.gov.au; Phone: +61 8 9222 3459; Fax: +61 8 9222 3444.

Cost: \$22 [inc. GST]