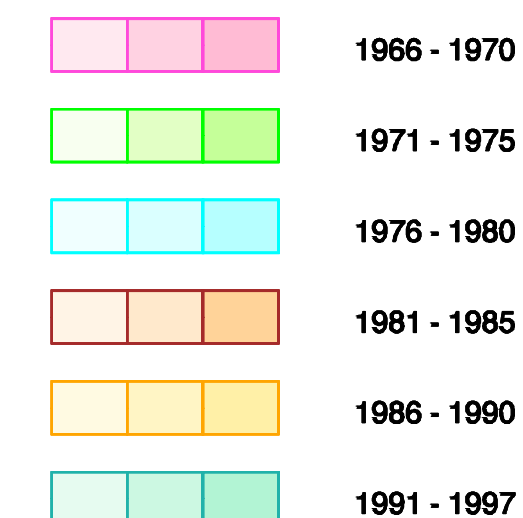
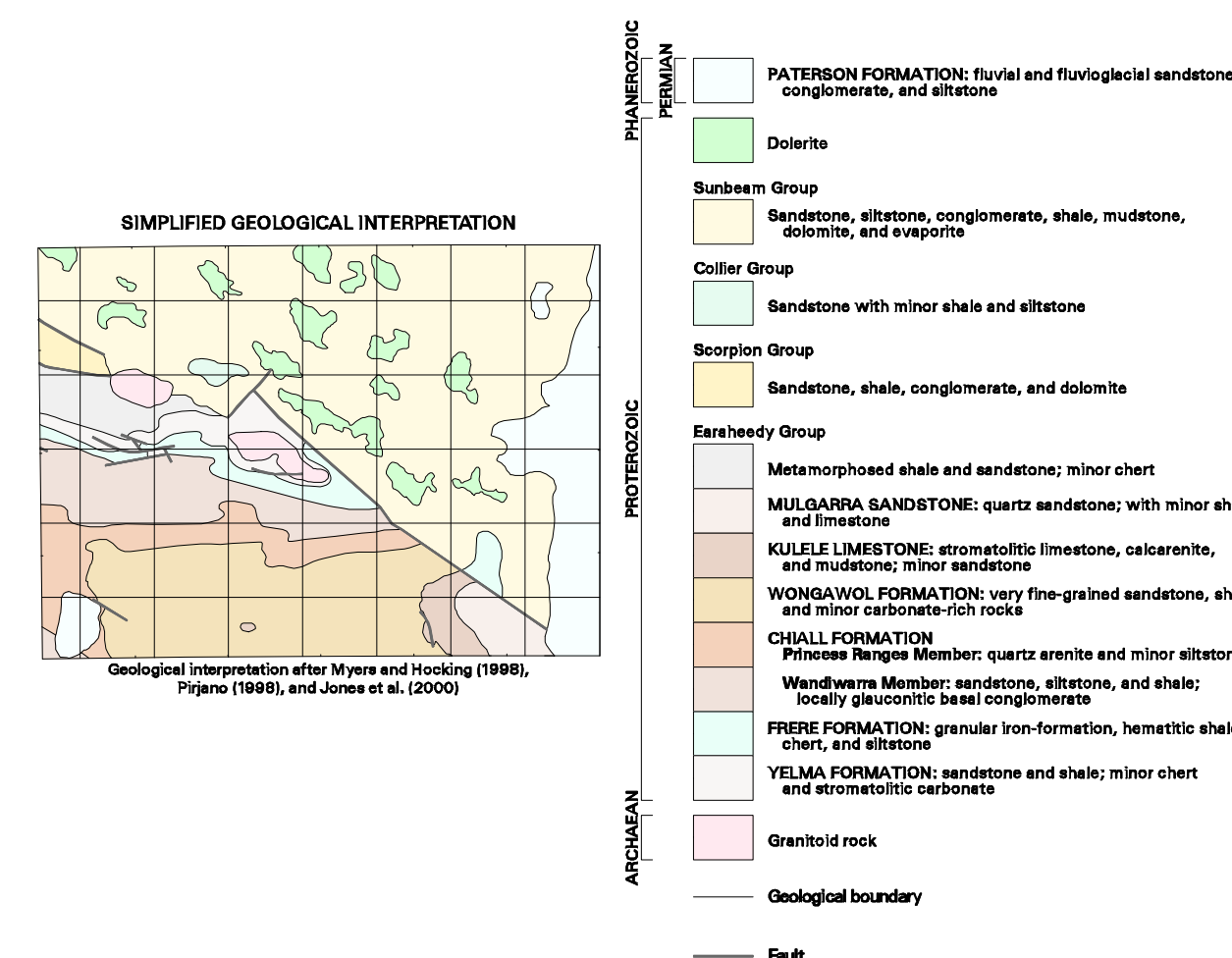


**COMPANY PROJECTS WITH SURFACE  
GEOCHEMISTRY DATA IN OPEN-FILE  
REPORTS (at June 1999)**

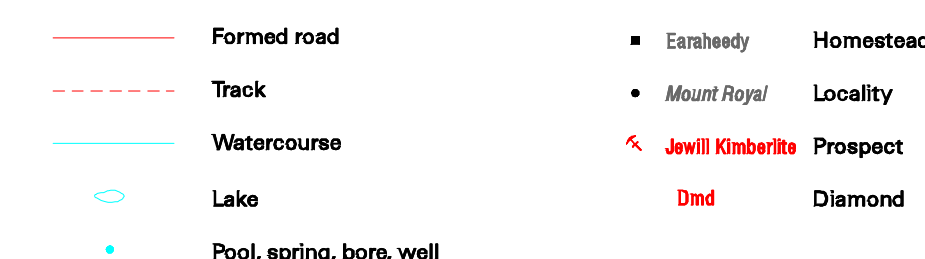
**Project period reported within**  
(Various colour shades used for ease of project identification)



Number within project area is a database ID number (see Appendix 2 of the Explanatory Notes)



## SYMBOLS



Edited by N. Tetlaw, K. Greenberg, and G. Loan

Cartography by M. Vicentic

Topography from Australian Surveying and Land Information Group, and Department of Land Administration Sheet SG 51 - 6

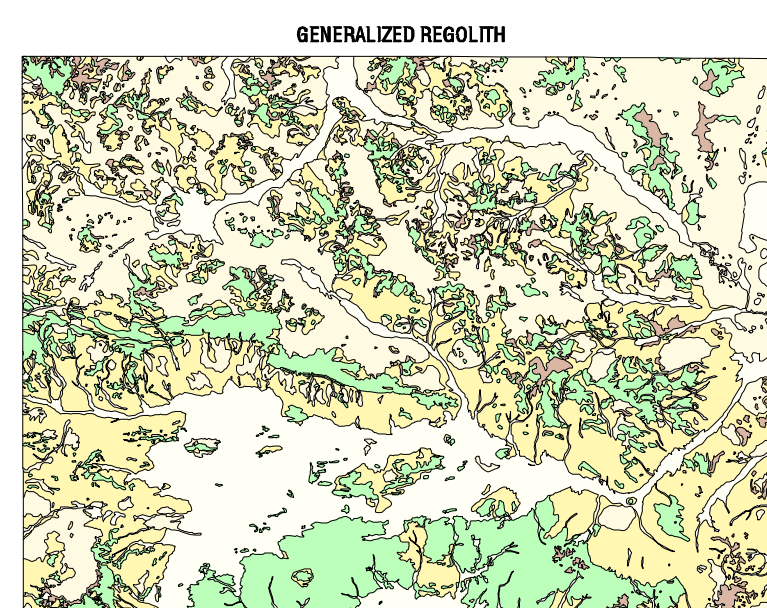
This map was compiled and produced using a Geographic Information System (ArcInfo), and the data are available in digital form.

Published by the Geological Survey of Western Australia. Copies of this map, or extracts of the data, are available from the Information Centre, Department of Minerals and Energy, 100 Plain Street, East Perth, W. A., 6004. Phone (08) 9222 3459, Fax (08) 9222 3444

Compiled by S. A. McGuinness 1999

Compiled from open-file mineral exploration reports held by  
the Geological Survey of Western Australia

The recommended reference for this map is:  
McGUINNNESS, S. A., 2000, Company projects with surface geochemistry data in open-file reports (at June 1998), Stanley, W.A. Sheet SG 51 - 6, in *Geochemical mapping of the Stanley 1:250 000 sheet by P. A. MORRIS, S. A. McGUINNNESS, A. J. SANDERS, and J. COKER*: Western Australia Geological Survey, 1:250 000 *Regolith Geochemistry Series Explanatory Notes, Plate 2*



SCALE 1:1 500 000

SCALE 1:250 000

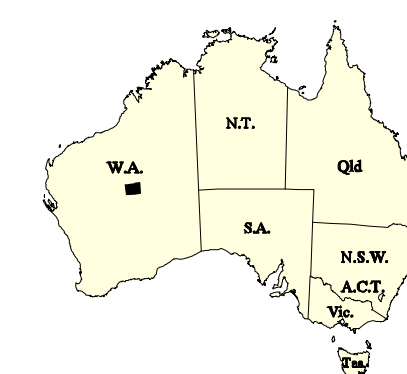


### UNIVERSAL TRANSVERSE MERCATOR PROJECTION

HORIZONTAL DATUM: GEOCENTRIC DATUM OF AUSTRALIA 1994  
VERTICAL DATUM: AUSTRALIAN HEIGHT DATUM

Grid lines indicate 20 000 metre interval of the Map Grid Australia, Zone 5

**GDA** The Map Grid Australia (MGA) is based on the Geocentric Datum of Australia 1994 (GDA94). GDA94 positions are compatible within one metre of the datum WGS84 positions.

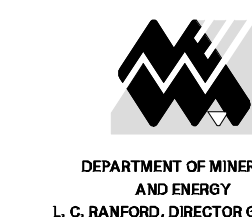


## SHEET INDEX

BULLEN SG 61-1	TRAIWOR SG 61-2	MADLEY SG 61-3
NABBERU SG 61-5	STANLEY SG 61-6	HERBERT SG 61-7
WILLUNA SG 61-9	KINGSTON SG 61-10	ROBERT SG 61-11

## INDEX TO 1:100 000 MAP SHEETS

MUDAN 3247	GLENAYLE 3347	KAHRBAN 3447
EARAHEEDY 3248	LEE STEERE 3348	COONABILD 3448



GOVERNMENT OF WESTERN AUSTRALIA  
HON. NORMAN MOORE, M.L.C.  
MINISTER FOR MINES



GEOLOGICAL SURVEY OF  
WESTERN AUSTRALIA  
DAVID BLIGHT, DIRECTOR

**COMPANY PROJECTS WITH SURFACE  
GEOCHEMISTRY DATA IN OPEN-FILE  
REPORTS (at June 1999)**

REGOLITH GEOCHEMISTRY SERIES

STANLEY

SHEET SG 51-6

FIRST EDITION 2000

**WARNING:** Inks are water soluble and will fade with prolonged exposure to light.