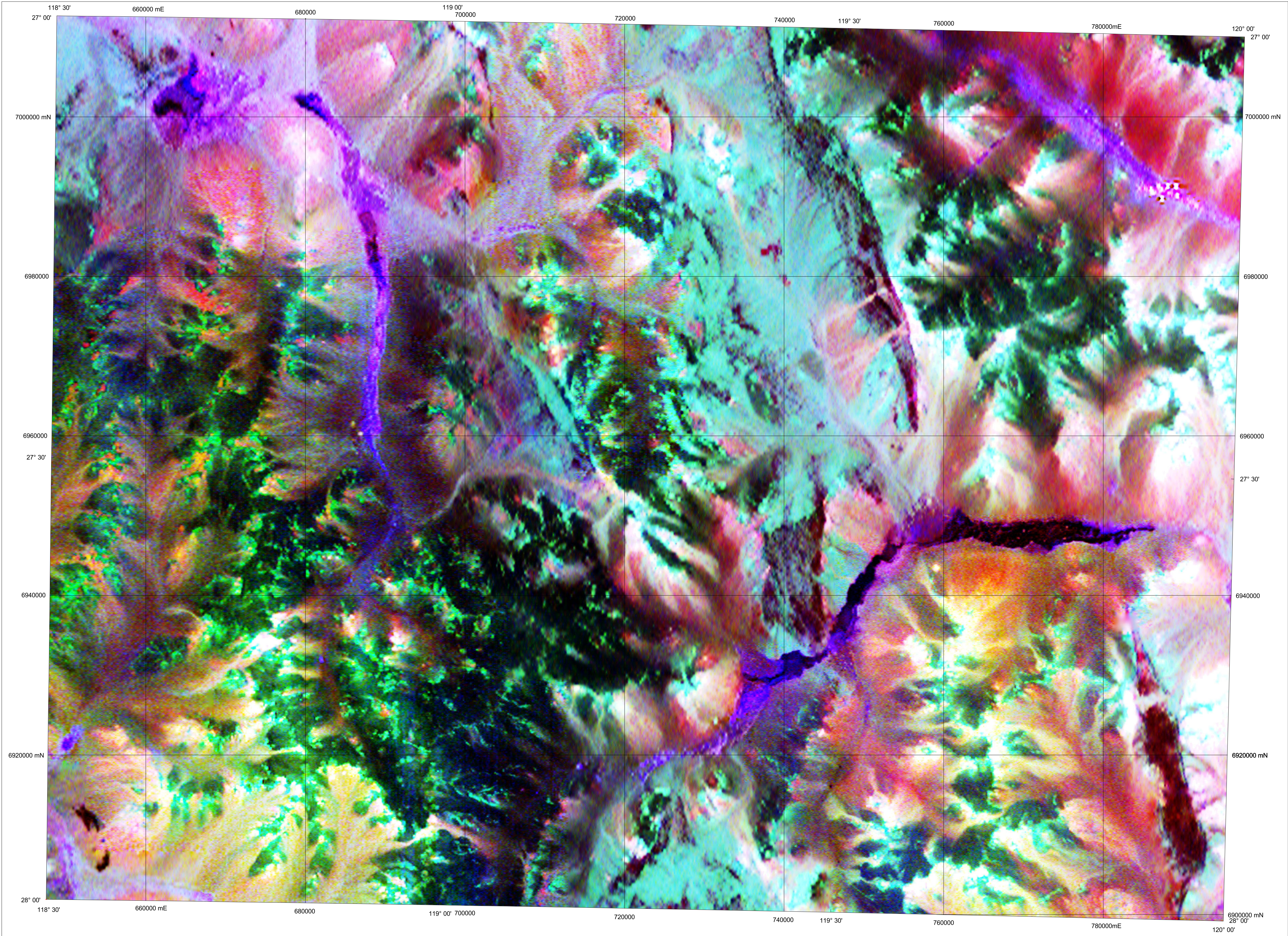


SANDSTONE

1:250 000 TERNARY RADIOMETRIC IMAGE

GEOLOGICAL SURVEY OF WESTERN AUSTRALIA

SHEET SG 50-16



This sheet area is covered by five surveys that are listed below, and the areas covered by each are shown on the Survey Index. The grid cell size is 50m.

Survey ID	Survey Name	Line Spacing	Line Direction	Ground clearance	Crystal Volume	Contractor	Date	Client
1	Arenite area A	250 m	180°	60 m	33.6 l	Kevron	1996	Stockdale Prospecting Ltd
2	Sandstone	200 m	180°	40 m	33.6 l	Kevron	1996	Astro Mining NL
3	Arenite area B	250 m	180°	60 m	33.6 l	Kevron	1996	Stockdale Prospecting Ltd
4	Lake Mason	200 m	180°	60 m	33.6 l	Kevron	1995	Stockdale Prospecting Ltd
5	Sandstone	400 m	90°	60 m	33.6 l	Kevron	2001	GSWA / AGSO

Uranium



Potassium

Thorium

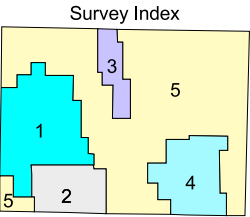
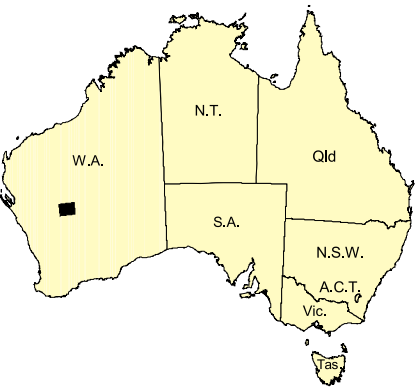
Data acquired in 2001 were merged by AGSO with private company data flown in 1995 and 1996, which now form part of the National Airborne Geophysics Database.

Published by the Geological Survey of Western Australia. Copies are available from the Information Centre, Department of Minerals and Energy, 100 Plain Street, East Perth, WA 6004 Phone (08) 9222 3459, Fax (08) 9222 3444, www.dme.wa.gov.au

Secondary data processing R. Franklin
Image processing J. H. Watt
Cartography M. Vicentic
Geophysics Project Manager S. H. D. Howard

These data are available in digital form from AGSO Airborne Geophysical Data Sales, GPO Box 378, Canberra, ACT 2601
Phone (02) 6249 9478, Fax (02) 6249 9913, www.agso.gov.au

The recommended reference for this map is:
GEOLOGICAL SURVEY OF WESTERN AUSTRALIA, 2001, Sandstone, W.A., Sheet SG 50-16: Western Australia Geological Survey 1:250 000 Ternary Radiometric Image



SHEET INDEX

BELELE SG 50-11	GLENGARRY SG 50-12	WILUNA SG 51-9
CUE SG 50-15	SANDSTONE SG 50-16	SIR SAMUEL SG 51-13
KIRKALOCKA SH 50-3	YOUANMI SH 50-4	LEONORA SH 51-1



GOVERNMENT OF WESTERN AUSTRALIA
CLIVE BROWN M.L.A.
MINISTER FOR STATE DEVELOPMENT, TOURISM,
SMALL BUSINESS, CULTURE/HERITAGE



DEPARTMENT OF MINERALS
AND ENERGY
L.C. RANFORD, DIRECTOR GENERAL

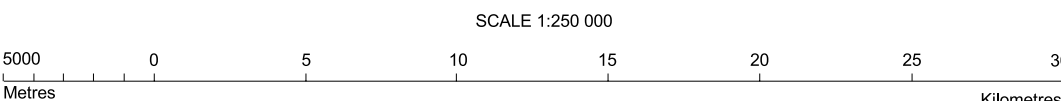


AGSO
NATIONAL GEOPHYSICS
AND REMOTE SENSING
NGMA

PRODUCT OF THE NATIONAL
GEOSCIENCE WARNING ACCORD



GEOLOGICAL SURVEY OF
WESTERN AUSTRALIA
TIM GREYSON, DIRECTOR



UNIVERSAL TRANSVERSE MERCATOR PROJECTION
HORIZONTAL DATUM: WORLD GEOIDETIC SPHEROID 1984
Grid lines indicate 20 000 metre interval of the Map Grid Australia Zone 50

The Map Grid Australia (MGA) is based on the Geocentric Datum of Australia 1984 (GDA84).
GDA84 positions are compatible within one metre of the datum WGS84 positions.

GEOLOGICAL SURVEY OF WESTERN AUSTRALIA
TERNARY RADIOMETRIC IMAGE
Potassium, Thorium, Uranium as red, green, blue

SANDSTONE
SHEET SG 50-16

First Edition 2001
© Western Australia 2001

WARNING: Inks are water soluble and will
fade with prolonged exposure to light