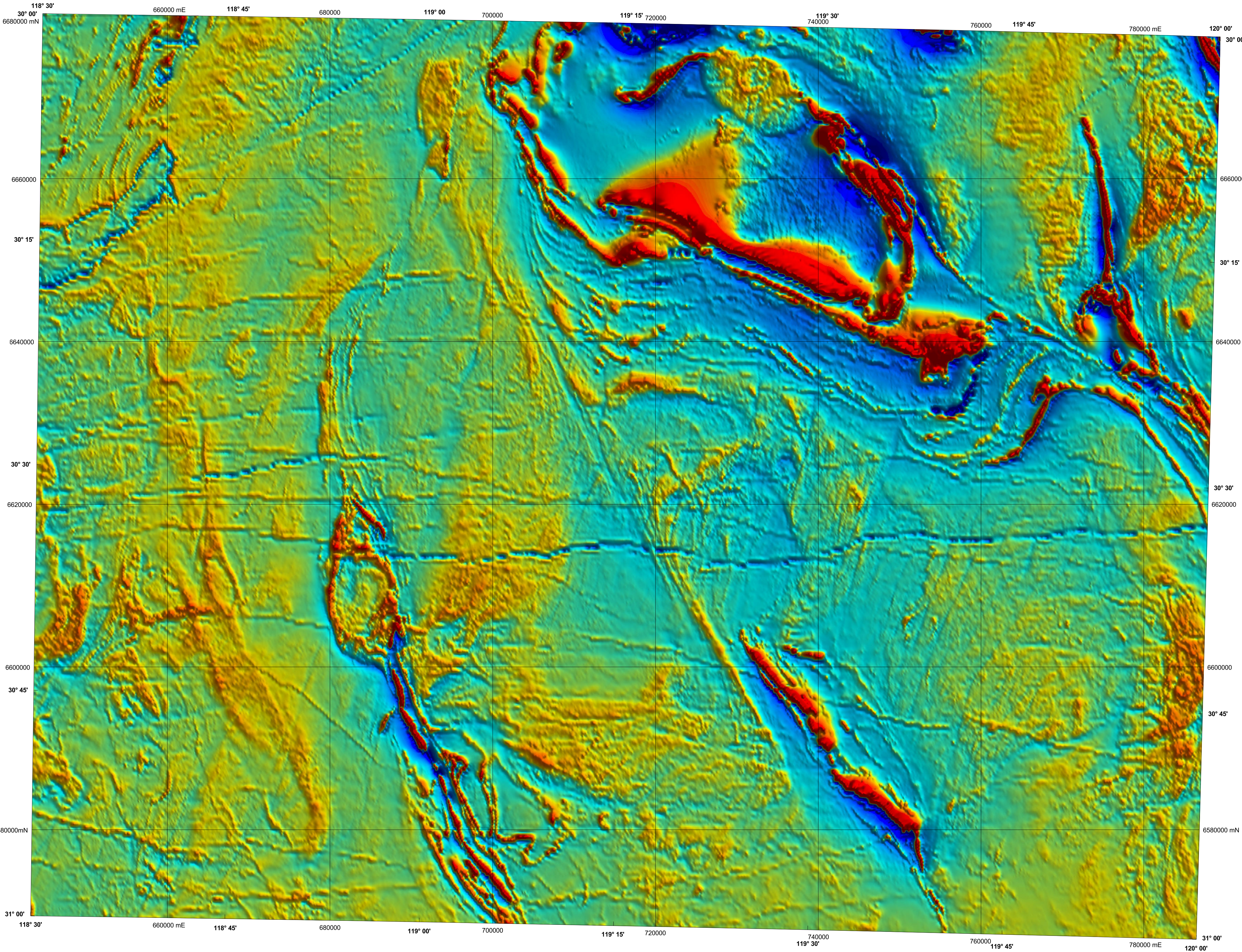


JACKSON

GEOLOGICAL SURVEY OF WESTERN AUSTRALIA

1:250 000 TOTAL MAGNETIC INTENSITY IMAGE

SHEET SH 50-12



6000

5500

5000

4500

4000

3500

nT

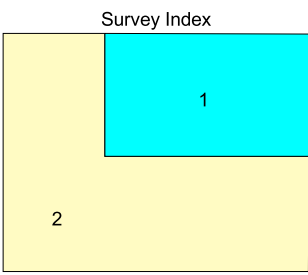
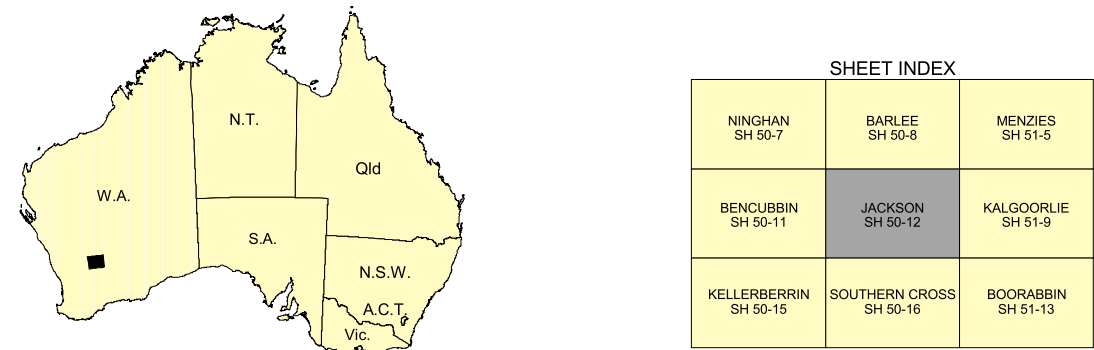
Kevron Geophysics Pty Ltd acquired these data in 1997 as two separate surveys that have been merged and now form part of the National Airborne Geophysics Database.

Published by the Geological Survey of Western Australia. Copies are available from the Information Centre, Department of Industry and Resources, 100 Plain Street, East Perth, WA 6004. Phone (08) 9222 3458, Fax (08) 9222 3444, www.doir.wa.gov.au

Secondary data processing	R. Franklin
Image processing	J. H. Watt
Cartography	M. Vicentic
Geophysics Project Manager	S. H. D. Howard

These data are also available in digital form from the Information Centre or Geoscience Australia Airborne Geophysical Data Sales, GPO Box 378, Canberra, ACT 2601. Phone (02) 6249 9478, Fax (02) 6249 9913, www.ga.gov.au

The recommended reference for this map is:
GEOLOGICAL SURVEY OF WESTERN AUSTRALIA, 2003, Jackson, W.A. Sheet SH 50-12: Western Australia Geological Survey, 1:250 000 Total Magnetic Intensity Image.



This image is covered by the two surveys listed in the table below and shown on the survey index.
The grid cell size is 80 m.

Survey ID	Survey name	Line spacing	Ground clearance	Flight direction	Contractor	Job number	Date	Client
1	Jackson	400 m	50 m	90° - 270°	Kevron	1481	1997	GSWA / GA
2	Barlee Jackson	400 m	60 m	90° - 270°	Kevron	5100	1997	GSWA / GA

CLIVE BROWN M.L.A.
MINISTER FOR
STATE DEVELOPMENT

Department of
Industry and Resources

Geological Survey of
Western Australia

JIM LINERICK
DIRECTOR GENERAL

TM GRIFFIN
DIRECTOR

GEOSCIENCE
AUSTRALIA

NGA
PRODUCT OF THE NATIONAL
GEOSCIENCE AGREEMENT

SCALE 1:250 000

5000 0 5 10 15 20 25 30
Metres Kilometres

UNIVERSAL TRANSVERSE MERCATOR PROJECTION
HORIZONTAL DATUM: GEODETIC DATUM OF AUSTRALIA
Grid lines indicate 20 000 metre interval of the Map Grid Australia Zone 50

The Map Grid Australia (MGA) is based on the Geocentric Datum of Australia 1994 (GDA94).
GDA94 positions are compatible within one metre of the datum WGS84 positions.

GEOLOGICAL SURVEY OF WESTERN AUSTRALIA

TOTAL MAGNETIC INTENSITY

JACKSON

SHEET SH 50-12

First Edition 2003
© Western Australia 2003