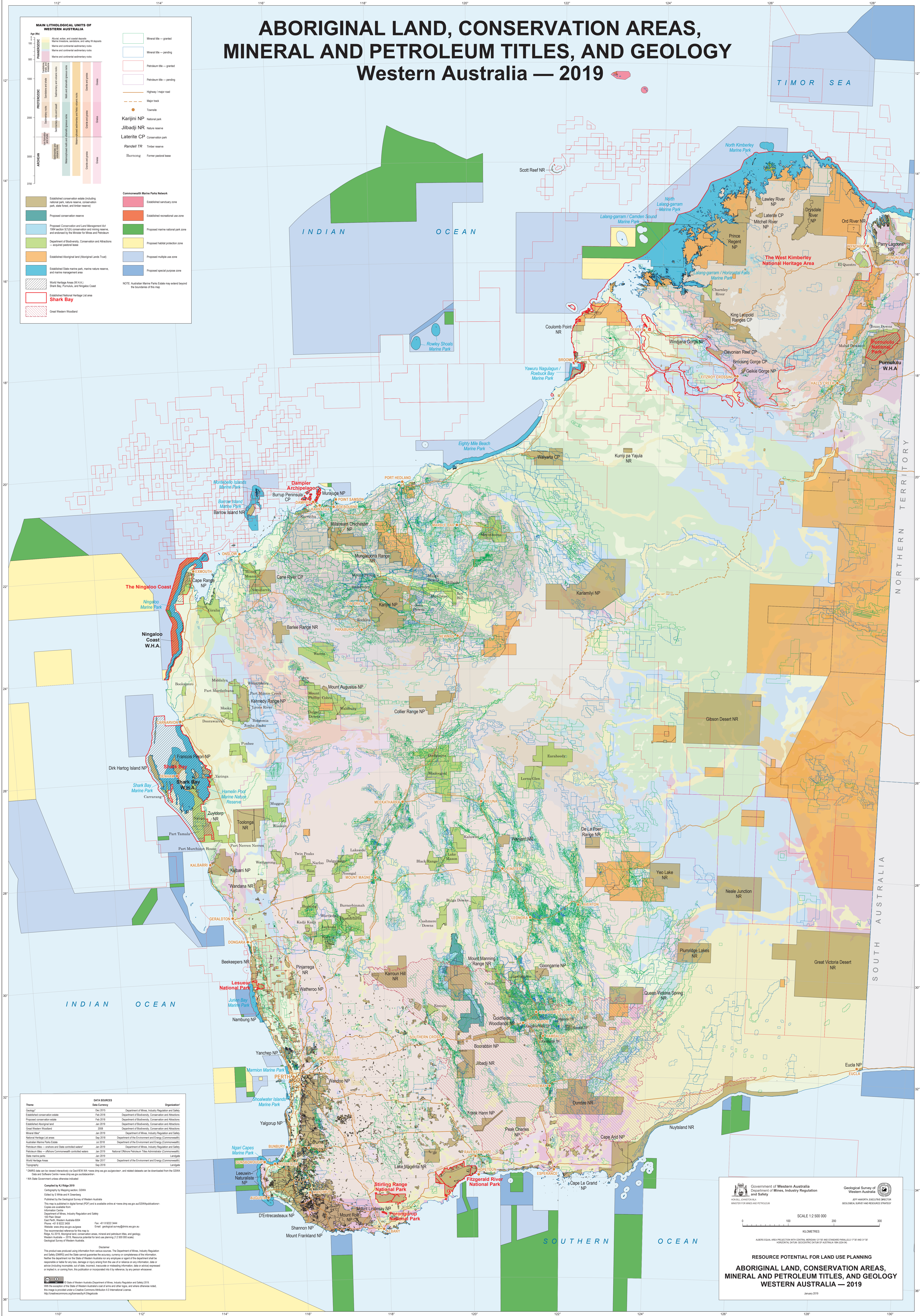


ABORIGINAL LAND, CONSERVATION AREAS, MINERAL AND PETROLEUM TITLES, AND GEOLOGY

Western Australia — 2019



The image shows the front cover of a report. At the top left is the coat of arms of Western Australia. To its right, the text reads: "Government of Western Australia", "Department of Mines, Industry Regulation and Safety". Below this, in smaller text, is "NORSE, PHOTOGRAPHIC" and "MINISTER FOR MINES AND PETROLEUM". On the top right is the logo of the Geological Survey of Western Australia, with the text "Geological Survey of Western Australia" and "J.B. HARRISON, EXECUTIVE DIRECTOR" and "GEOLOGICAL SURVEY AND RESOURCE STRATEGY" below it. The center of the cover features a scale bar from 0 to 200 KILOMETRES, with the text "SCALE 1:2 500 000" above it. Below the scale bar, it says "ALBERS EQUAL AREA PROJECTION WITH CENTRAL MERIDIAN 127°30' E AND STANDARD PARALLELS 17°00' S AND 33°00' S" and "HORIZONTAL DATUM: AUSTRALIAN COASTAL DATUM OF AUSTRALIAN TIME ZONE". The title "RESOURCE POTENTIAL FOR LAND USE PLANNING" is printed in large, bold, capital letters. Below the title, the subtitle "ABORIGINAL LAND, CONSERVATION AREAS, MINERAL AND PETROLEUM TITLES, AND GEOLOGY WESTERN AUSTRALIA — 1979" is also in large, bold, capital letters. At the bottom center, the date "January 1979" is printed.