

Reference

CAINOZOIC	QUATERNARY		Qs	Sand
			Ql	Hard travertine, tufa
			Qc	Caliche or travertine powder
			Qt	Salt
MESOZOIC	CRETACEOUS	Anketell Sandstone	Ka	Sandstone, shale
	Undifferentiated		Ms	Disconformity Sandstone and strongly ferruginized conglomerate (includes equivalent of Callawa Formation)
PALAEOZOIC	PERMIAN	Triwhite Sandstone	Pt	Unconformity Sandstone, greywacke, sandstone with concretions, marine fossils
		Dora Shale	Pd	Shale, fine sandstone, marine fossils
		Cuncudgerie Sandstone	Pc	Coarse to fine sandstone and greywacke, marine fossils
		Paterson Formation	Pa	Conglomerate, sandstone, claystone, (probably fluvialglacial)
		Undifferentiated	P	Sediments
PROTEROZOIC	UPPER		Eu	Unconformity Sediments
			Etg	Granite
	LOWER		Etg	Granite
			Etbn	Metamorphics

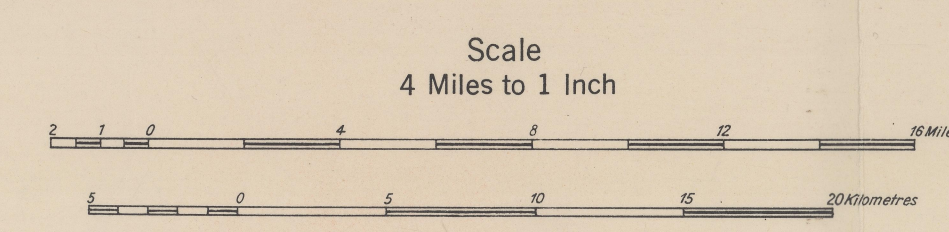
- Established geological boundary—position approximate
- Inferred geological boundary
- Inferred fault
- Inferred fault—concealed
- Strike and dip of strata—inclined
- Strike and dip of strata—vertical
- Trend line of bedding
- Dip of inclined strata 0-15°
- Dip of inclined strata 15-45°
- Dip of inclined strata >45°
- Joint patterns
- Text reference of specimen locality
- Marine microfossil locality
- Marine microfossil locality
- Barometric spot height—datum: mean sea level
- Route of geological party's traverse
- Sand dune
- Spring
- Well
- Rockhole
- Sink
- Astro station

Compiled and published by the Bureau of Mineral Resources, Geology and Geophysics, Department of National Development. Air-photography, complete vertical coverage at medium scale by Royal Australian Air Force. Transverse Mercator Projection

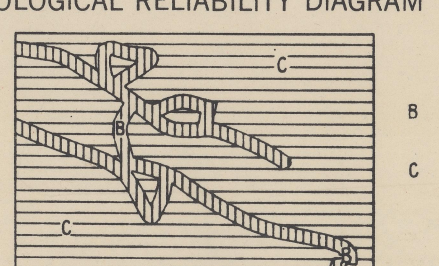
INDEX TO ADJOINING SHEETS

YARRIE	ANKETELL	JOANNA SPRING
NULLADING	PATERSON RANGE	SAHARA
BALFOUR DOWNS	RUDALL	TABLETOP

ANNUAL CHANGE T.M.W.

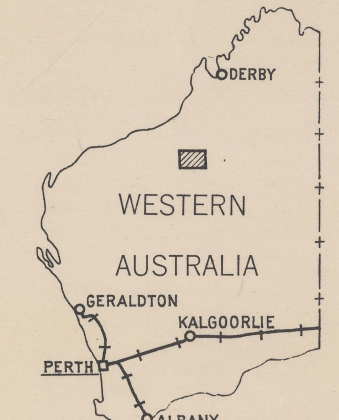
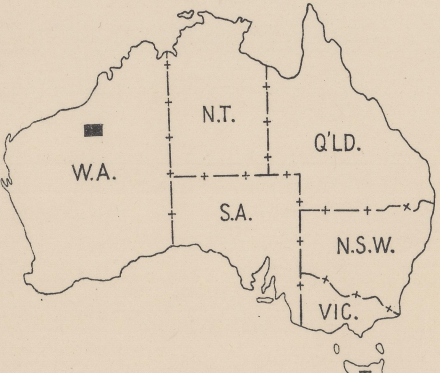
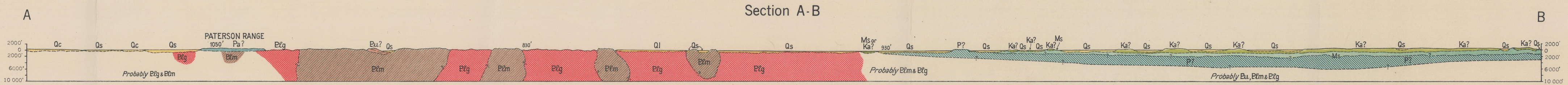


GEOLOGICAL RELIABILITY DIAGRAM



Geology by: D. M. Travers, J. N. Casey, A. T. Wells  
Compiled, March 1956, by: J. N. Casey, A. T. Wells, H. F. Boltz  
Drawn by: W. G. Krause

Section A-B



PATERSON RANGE  
SHEET F 51-6

Copies of this map may be obtained from Bureau of Mineral Resources, Geology & Geophysics, Canberra, A.C.T., or Geological Survey of Western Australia Perth, W.A.