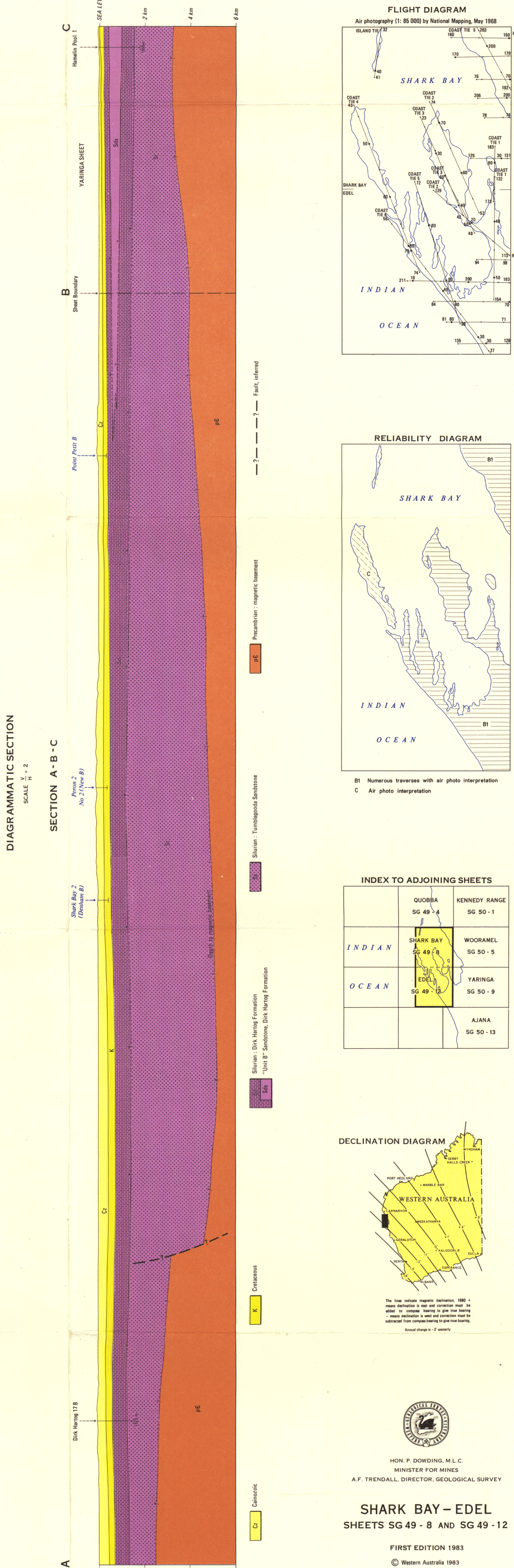
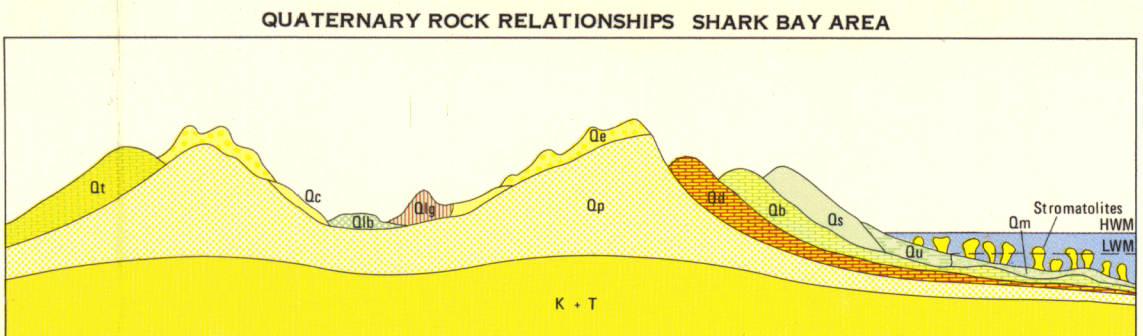
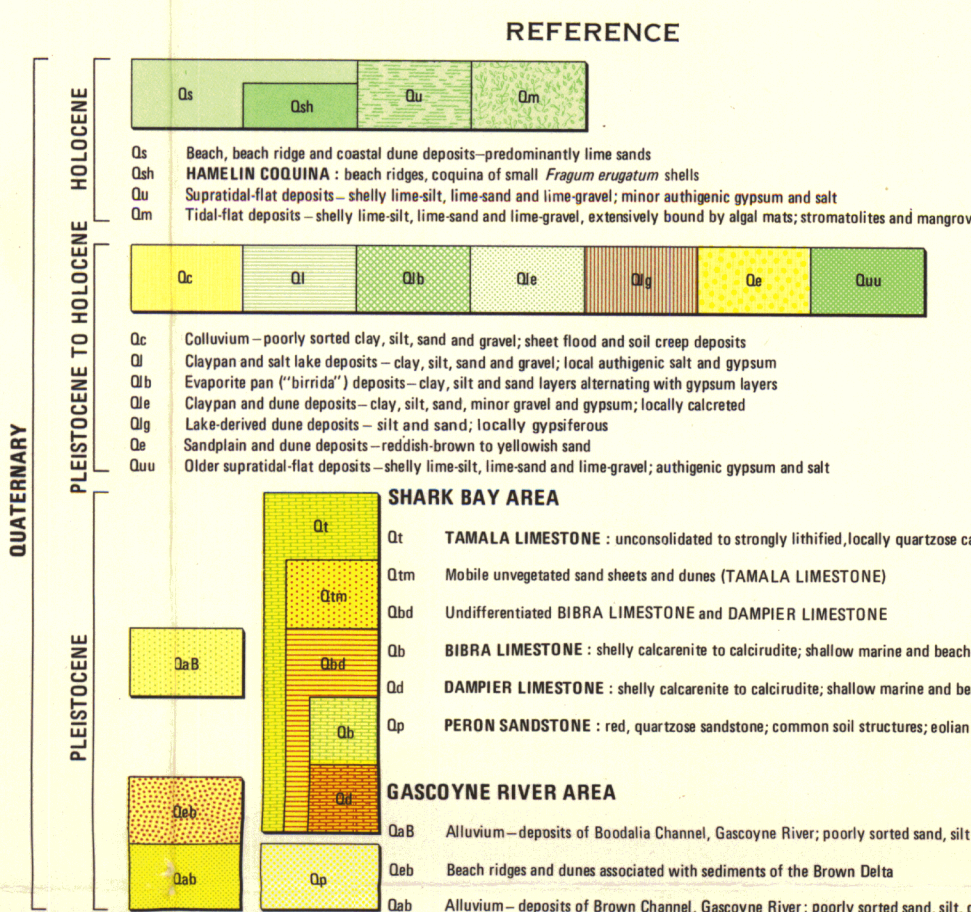
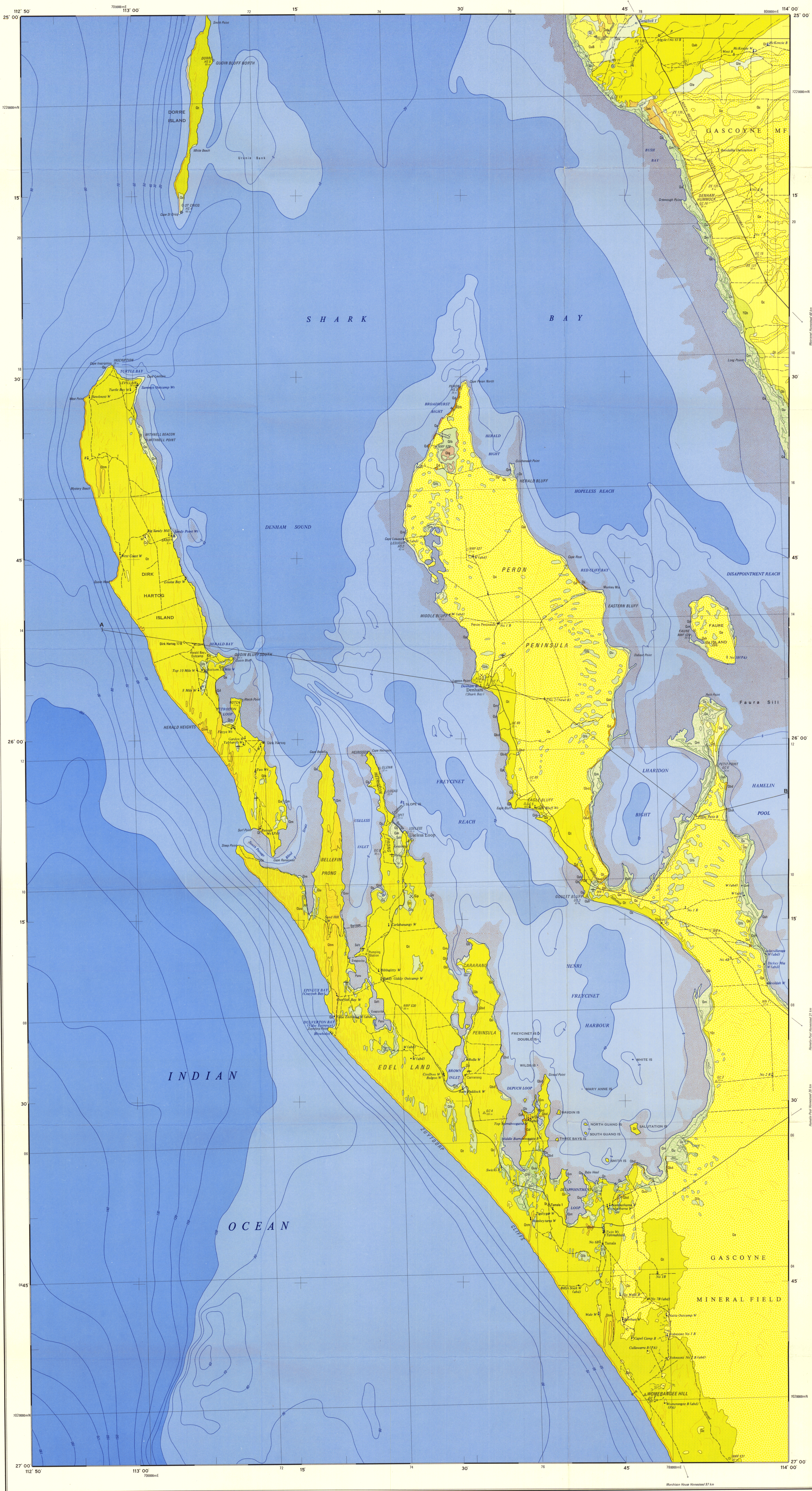


# SHARK BAY-EDEL

GEOLOGICAL SURVEY OF WESTERN AUSTRALIA

AUSTRALIA 1:250 000 GEOLOGICAL SERIES

PART OF SHEETS SG 49-8 AND SG 49-12



Compiled and published by the Geological Survey of Western Australia. Cartography by the Geological Mapping Section, Department of Mines. Topographic base from compilations by the National Mapping Council, A.C.T.

Copy of this map may be obtained from the Geological Survey of Western Australia, 88 Adelaide Terrace, Perth.

Printed by the Government Printing Office, Perth.

SCALE 1:250 000

TRANSVERSE MERCATOR PROJECTION

ZONE 48 AUSTRALIAN MAP GRID

Geology by R.J.E. van de Graaff, B.P. Dunbar, R.M. Hocking 1977

HON. P. DUNNING, M.L.C.  
MINISTER FOR MINES  
A.F. TRENDALL, DIRECTOR, GEOLOGICAL SURVEY

SHARK BAY-EDEL  
SHEETS SG 49-8 AND SG 49-12

FIRST EDITION 1983  
© Western Australia 1983