

Data acquired in 2000 were merged by Geoscience Australia with private company data flown between 1989 and 1995 and now form part of the National Airborne Geophysical Database.

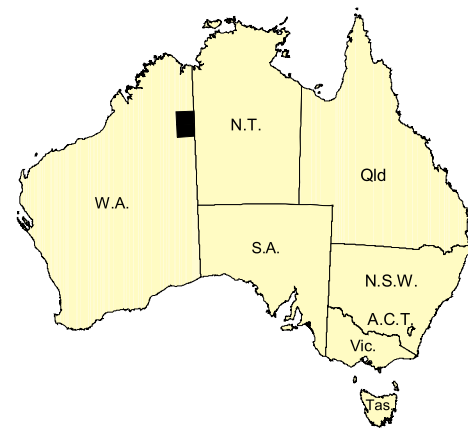
Published by the Geological Survey of Western Australia. Copies are available from the Information Centre, Department of Industry and Resources, 100 Plain Street, East Perth, WA 6004. Telephone (08) 5222 3450, Fax (08) 5222 3444, [www.dor.wa.gov.au](http://www.dor.wa.gov.au)

Secondary data processing  
Image processing  
Cartography  
Geophysical Project Manager

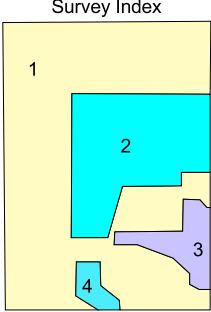
R. Franklin  
J. H. Watt  
M. Moir  
S. H. D. Howard

These data are available in digital form from Geoscience Australia Airborne Geophysics Data Sales, GPO Box 376, Canberra, ACT 2601  
Telephone (02) 6246 6515, Fax (02) 6246 9982, [www.ga.gov.au](http://www.ga.gov.au)

The recommended reference for this map is:  
GEOLOGICAL SURVEY OF WESTERN AUSTRALIA, 2003, West Tanami, W.A. Sheet SE 52-14 and part Sheets SE 52-10 and SF 52-2, Western Australia Geological Survey, 1:250 000 Total Magnetic Intensity Image

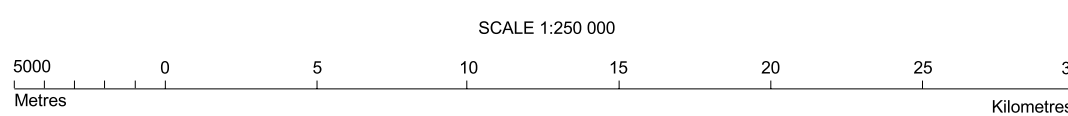
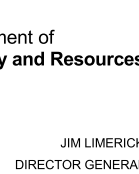


MCKINLAY SE 51-12	MOUNT TAMBORA SE 52-8	CEDRON DOONAN SE 50-10
CORRALAND SE 51-18	MOUNT DANBROOK SE 52-13	WILLUNA SE 52-14
CUMBER SF 51-4	CORRAL SF 52-1	UPPER SF 52-1



The image is compiled from four surveys that are listed below, and the areas covered by each are shown on the survey index. The grid cell size is 80 m.

Survey ID	Survey name	Line spacing	Ground clearance	Flight direction	Contractor	Date	Client
1	West Tanami	400 m	60 m	0° - 180°	UTS	2002	CSIRWAGA
2	Brindabella	300 m	70 m	0° - 180°	Keiron	1991	CRAE
3	Billuna	250 m	80 m	0° - 180°	Geotrex	1989	CRAE
4	Balgo	200 m	60 m	90° - 270°	Aerodata	1985	Zapopan NL



UNIVERSAL TRANSVERSE MERCATOR PROJECTION  
HORIZONTAL DATUM: GEODETIC DATUM OF AUSTRALIA  
Grid lines indicate 20 000 metre interval of the Map Grid Australia Zone 52

The Map Grid Australia (MGA) is based on the Geocentric Datum of Australia 1984 (GDA84).  
GDA84 positions are compatible within one metre of the datum WGS84 positions.

GEOLOGICAL SURVEY OF WESTERN AUSTRALIA

TOTAL MAGNETIC INTENSITY  
**WEST TANAMI**  
SHEET SE 52-14, and PART SHEETS SE 52-10 and SF 52-2  
First Edition 2003  
© Western Australia 2003