

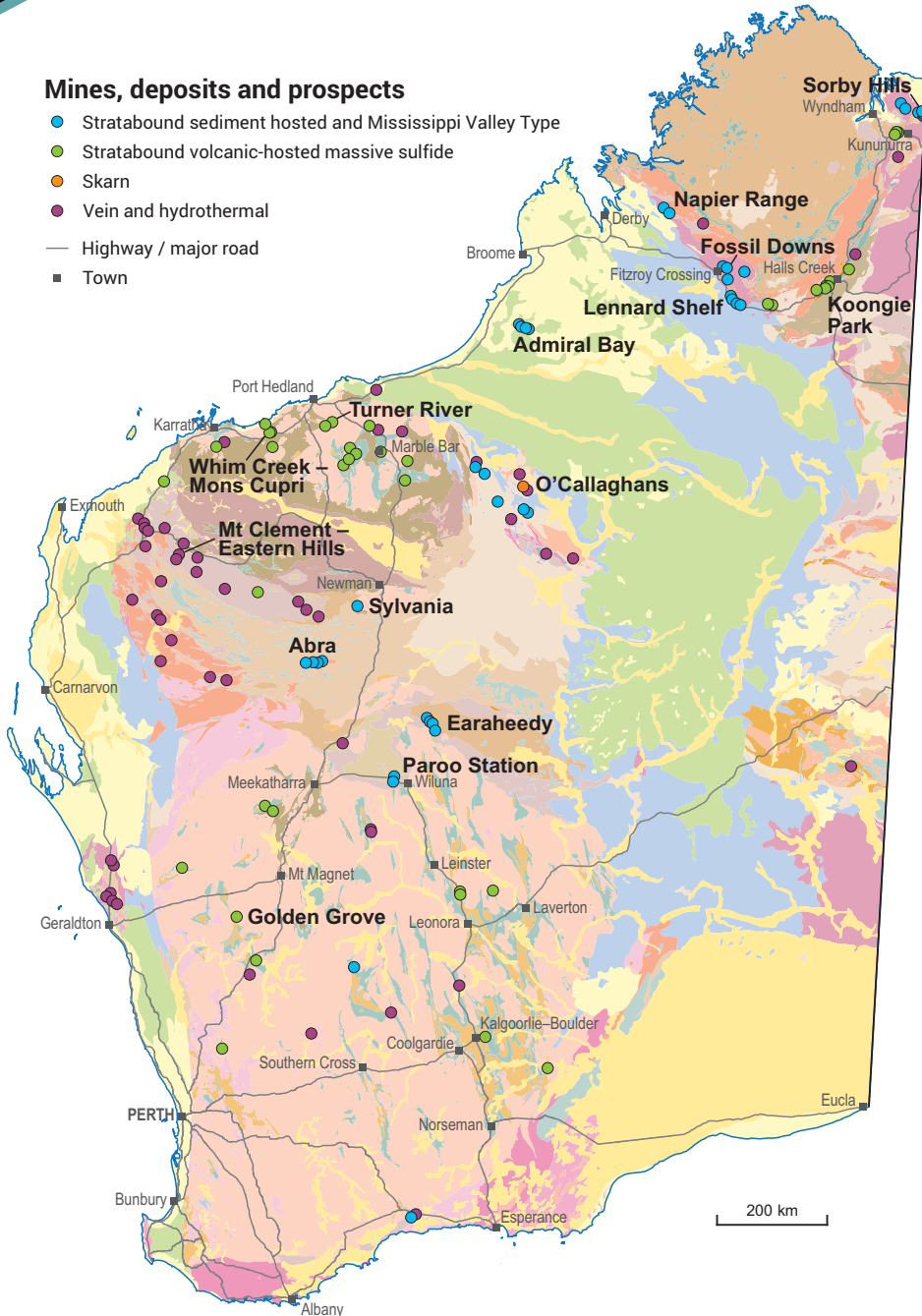
LEAD

INVESTMENT OPPORTUNITIES

WORLD-CLASS RESOURCE PROVINCE | SECURE INVESTMENT LOCATION
WORLD-LEADING GEOSCIENTIFIC DATA | GLOBAL MINING SERVICES INDUSTRY

Mines, deposits and prospects

- Stratabound sediment hosted and Mississippi Valley Type
- Stratabound volcanic-hosted massive sulfide
- Skarn
- Vein and hydrothermal
- Highway / major road
- Town



Current resources for Western Australia are over 11 Mt of contained lead

- The four largest deposits together contain more than 10 Mt of lead: Admiral Bay, Abra, Paroo Station and Sorby Hills
- Lead production in 2021 was from the Golden Grove mine – a zinc, copper, lead, silver and gold operation in the Yilgarn Craton
- Lead is associated with volcanic and sediment-hosted massive sulfides as well as skarn, vein and hydrothermal mineralization

Recent activity at Abra and Sorby Hills

- A final investment decision has been made for the Abra mine with construction of the underground decline having commenced in October 2021. First production is anticipated in 2023
- Mineral resource estimate for Sorby Hills has increased to 50 Mt at 4.3% Pb equivalent (3.2% Pb, 37 g/t Ag) and 0.5% Zn, with a definitive feasibility study underway

Recent drilling results

- Drilling at the Chinook prospect within the Earaheedy Project had up to 6.57% Zn+Pb
- Drilling has confirmed multiple zones of near-surface high-grade mineralization at the Mons Cupri deposit, with results including 11 m at 5.01% Zn and 5.22% Pb
- Drilling at Barker Well in the Braeside Project in the Pilbara intersected 4 m at 18.63% Pb, 1.72% Zn and 11.7 g/t Ag from 17 m

\$2 m
Sales value



851 t
Tonnes sold



1894[†]
Full-time employees



\$353 m*
Investment projects



5.0%
Royalty rate



(2020–21 financial year)

* Includes projects planned, possible, committed or under construction as of October 2021

[†] Total for copper, lead and zinc



Projects with lead resources – ranked by contained lead >10 kt

Resources estimated according to JORC 2012

	Project	Status	Owner	Commodity	Resources (Mt)	Av. grade Pb (%)	Contained Pb (kt)	Resource date
	Admiral Bay	Pre-feasibility	Metalicity	Zn–Pb–Ag	170.0	2.70	4590	04/07/2016
	Abra	Under development	Galena Mining / Toho	Pb–Cu–Zn–Ag–Au	34.4	7.20	2476	28/04/2021
	Paroo Station	Feasibility	LeadFX	Pb	39.0	4.31	1680	31/12/2016
	Sorby Hills	Pre-feasibility	Henan Yuguang Gold and Lead Co. / Boab Metals	Pb–Zn–Ag	50.0	2.93	1464	06/05/2021
	Lennard Shelf*	Exploration	Northwest Nonferrous International Investment Co.	Zn–Pb	15.0	4.28	642	24/03/2011
	O'Callaghans	Pre-feasibility	Newcrest Mining	Zn–Cu–Pb–W	78.0	0.24	189	31/12/2017
	Golden Grove	Operating	29Metals	Zn–Cu–Pb–Ag–Au	57.6	0.27	153	30/06/2020
	Jerdacuttup	Exploration	Medallion Metals	Au–Cu–Ag–Zn–Pb	5.1	2.60	133	01/03/2018
	Sylvania*	Exploration	DiscovEx Resources	Zn–Pb–Ag	3.0	1.59	47	08/06/2010
	Turner River – Orchard Well	Exploration	De Grey Mining	Zn–Cu–Pb–Ag–Au	3.5	1.32	46	28/09/2017
	Fossil Downs*	Exploration	Northwest Nonferrous International Investment Co.	Zn–Pb	2.2	2.10	45	24/03/2011
	Koongie Park*	Exploration	Anglo Australia / Auking Mining	Zn–Cu–Pb–Ag–Au	4.5	0.92	41	31/03/2009
	Mt Clement – Eastern Hills	Exploration	Northern Star Resources	Pb–Au–Ag–Sb	1.3	2.49	33	29/11/2013
	Lennons Find*	Exploration	Musketeer Mining / Individuals	Zn–Cu–Pb–Ag–Au	1.8	1.45	26	01/01/2012
	Ajana*	Exploration	Anson Resources	Pb	0.4	6.44	25	15/07/2010
	Whim Creek – Mons Cupri	Scoping	Anax Metals / Venturex Resources	Zn–Cu–Pb–Ag–Au	6.9	0.35	24	25/05/2021
	Salt Creek	Exploration	Anax Metals / Venturex Resources	Zn–Cu–Pb–Ag–Au	1.8	1.17	21	26/09/2019
	Sulphur Springs	Exploration	Venturex Resources	Zn–Cu–Pb–Ag–Au	3.6	0.34	12	22/09/2015
	Eastman*	Exploration	Peako	Zn–Cu–Pb–Ag–Au	1.5	0.70	11	24/01/2007

Resource estimates have been rounded

* Resource estimates are not JORC 2012 compliant



Stratabound volcanic-hosted massive sulfides



Stratabound sediment hosted and Mississippi Valley Type



Skarn



Vein and hydrothermal

For more information



Geological Survey of
Western Australia

www.dmirs.wa.gov.au/gswa



www.dmirs.wa.gov.au/minedex



www.dmirs.wa.gov.au/geoview

Contact us

Sarah Sargent

Geological Survey and Resource Strategy Division

Email: minerals.investors@dmirs.wa.gov.au

Tel: +61 8 9222 3890



Government of Western Australia
Department of Mines, Industry Regulation and Safety

December 2021

Geological Survey of
Western Australia

