

EXPLANATORY NOTES FOR THE DIGITAL AGE

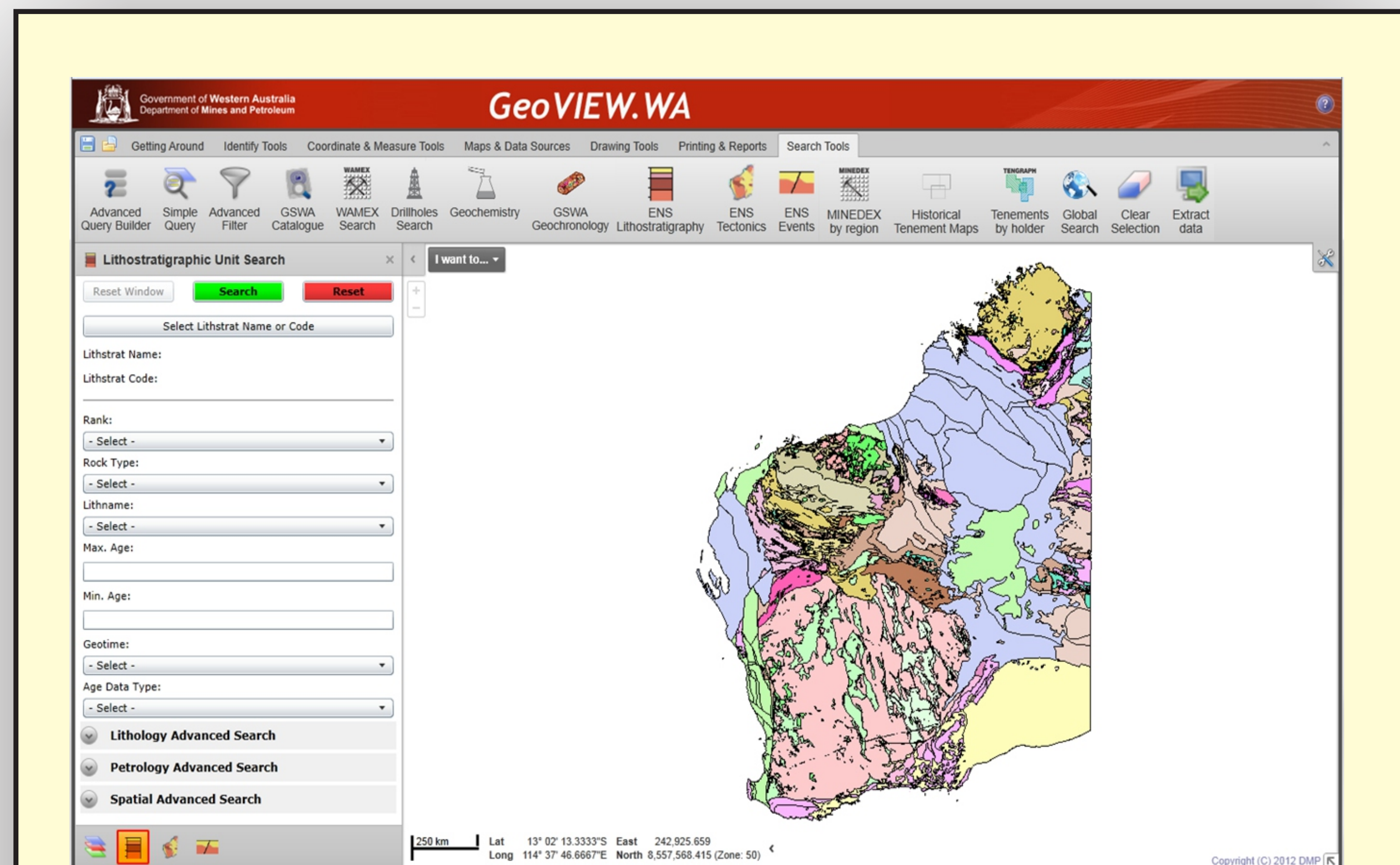
THEN



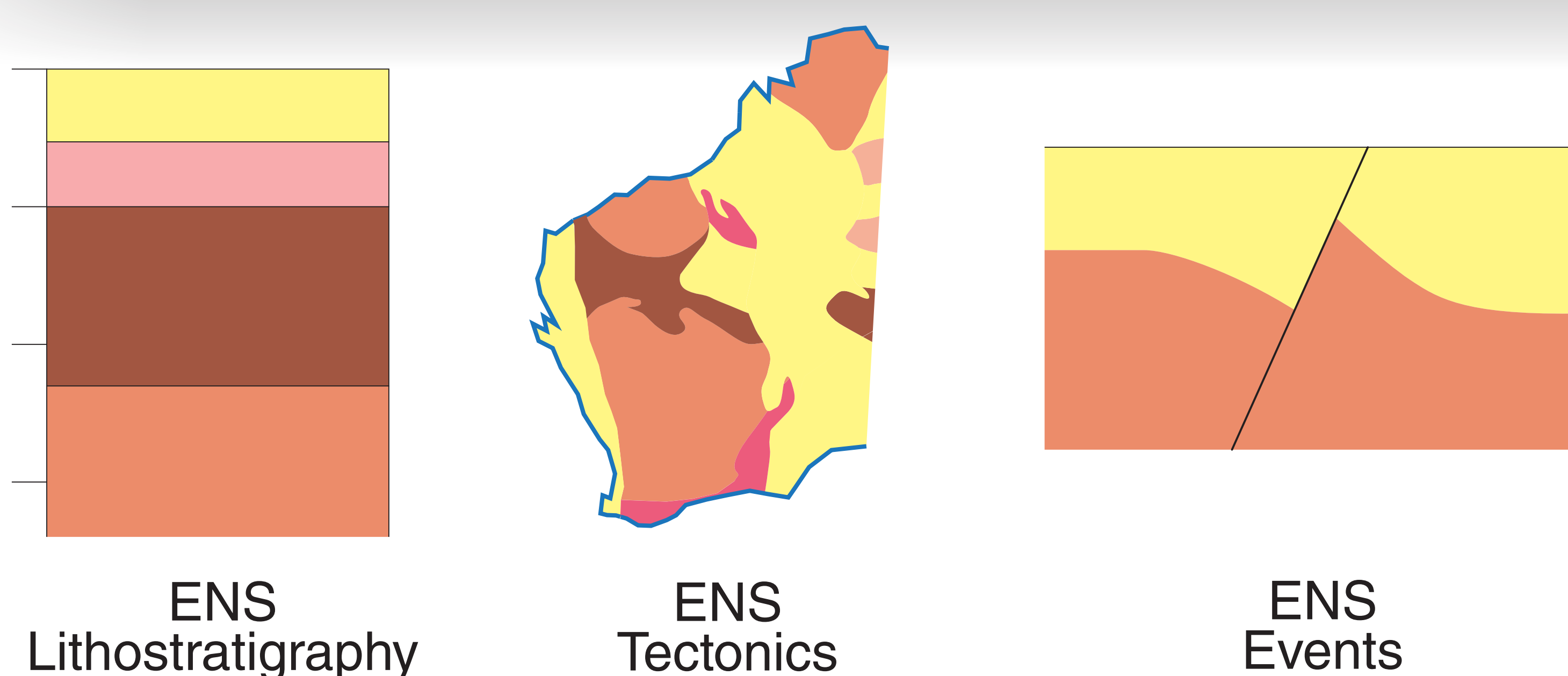
GSWA published hardcopy Explanatory Notes for 1:100 000 and 1:250 000 maps from 1962 to 2010.

These notes were snapshots in time of the geological understanding for a single map tile, rarely updated as new information became available or interpretations changed.

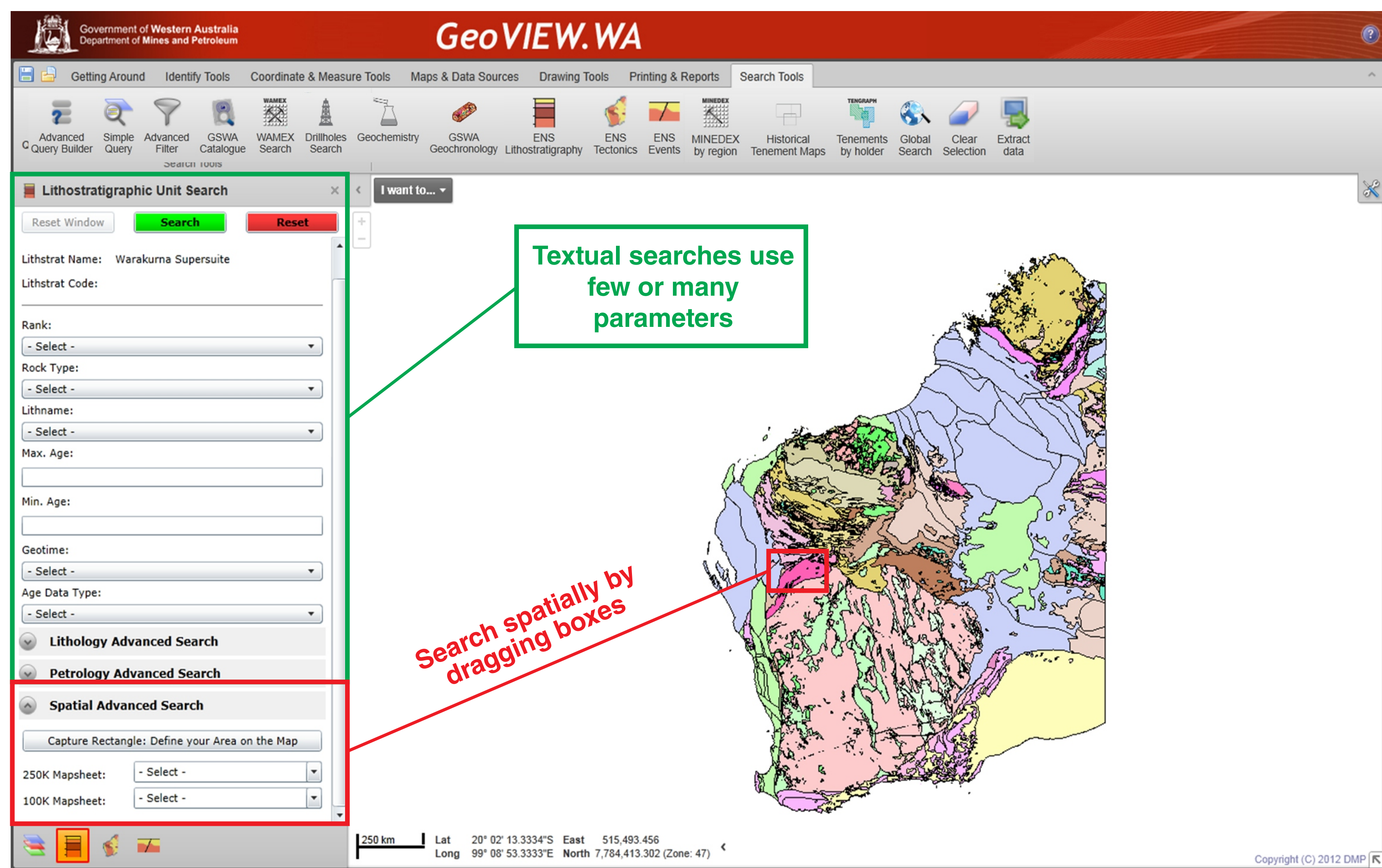
NOW



Explanatory Notes will soon be delivered online through GeoVIEW.WA. Spatial and/or textual interrogation of lithostratigraphic units, tectonic units, and events can be done via a set of designated Search Tools.



SEARCHING

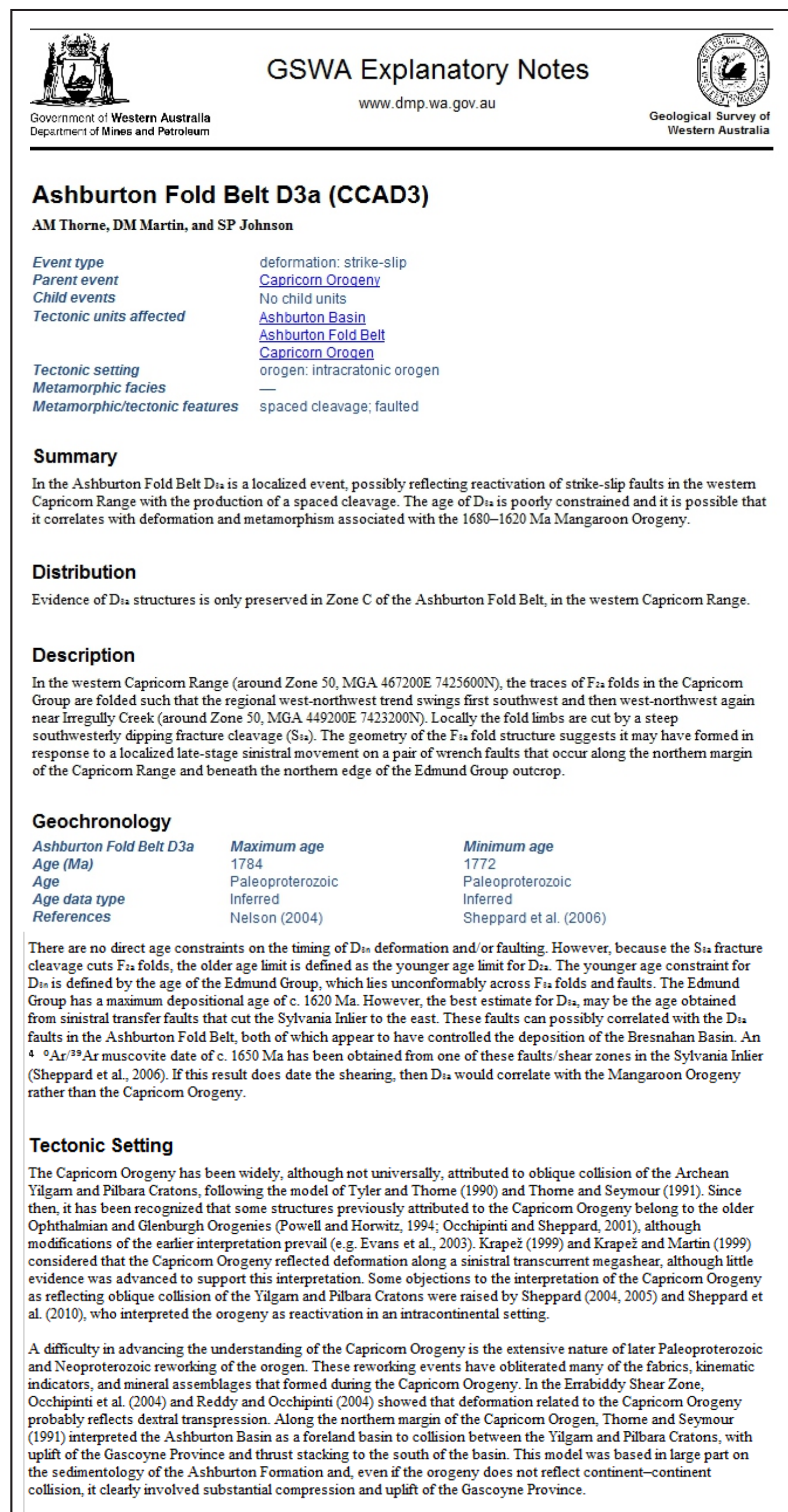


Textual searches are made by selecting a unit name and/or a number of different parameters via drop-down menus.

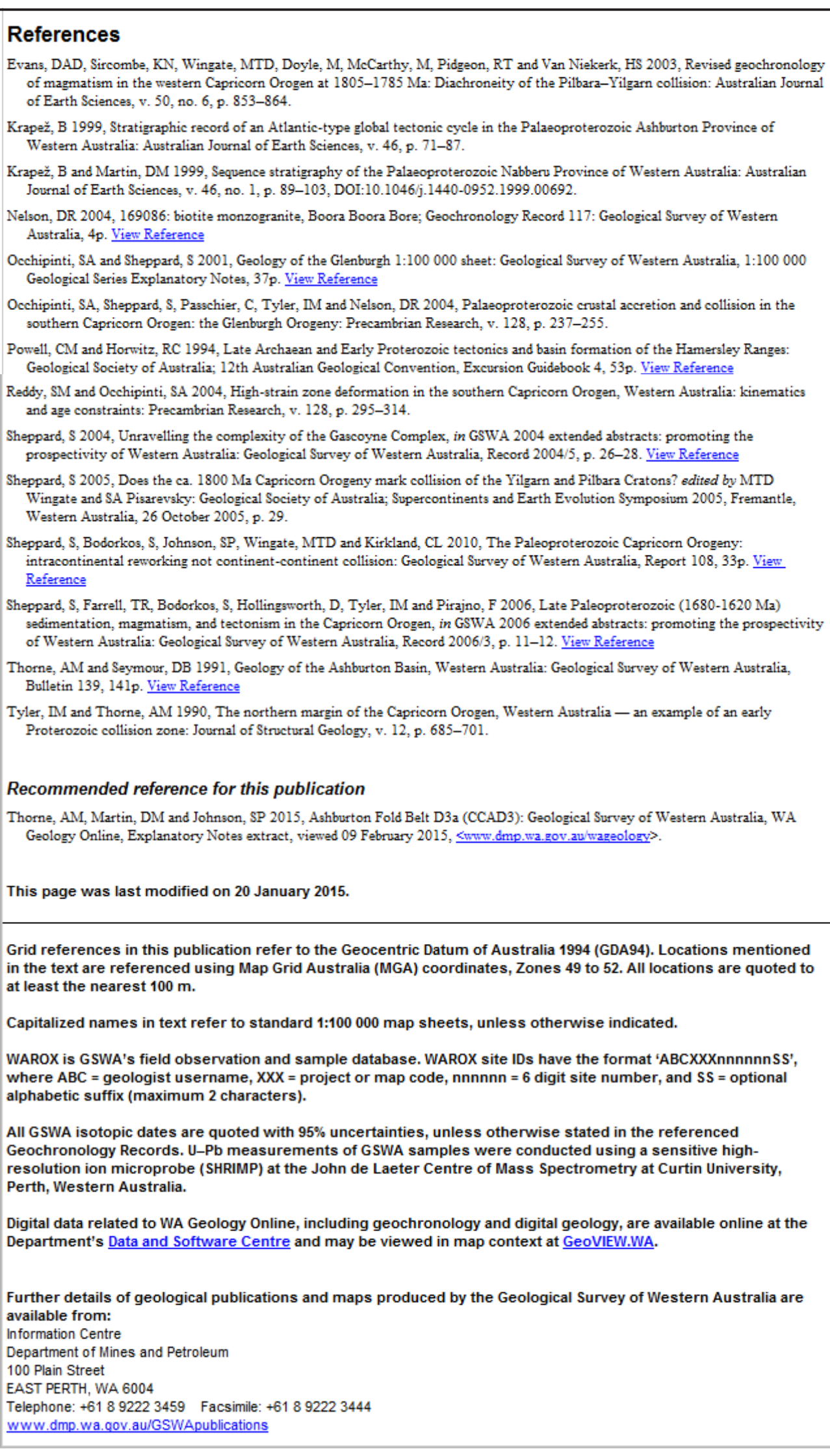
Spatial searches are available for lithostratigraphic and tectonic units on state-wide 1:500 000 Interpreted Bedrock Geology layers, and on the Onshore Tectonic Map of Western Australia; spatial functionality for geological events is being developed.

Spatial searches can also be conducted by selecting a rectangular area or a 250k/100k map sheet name.

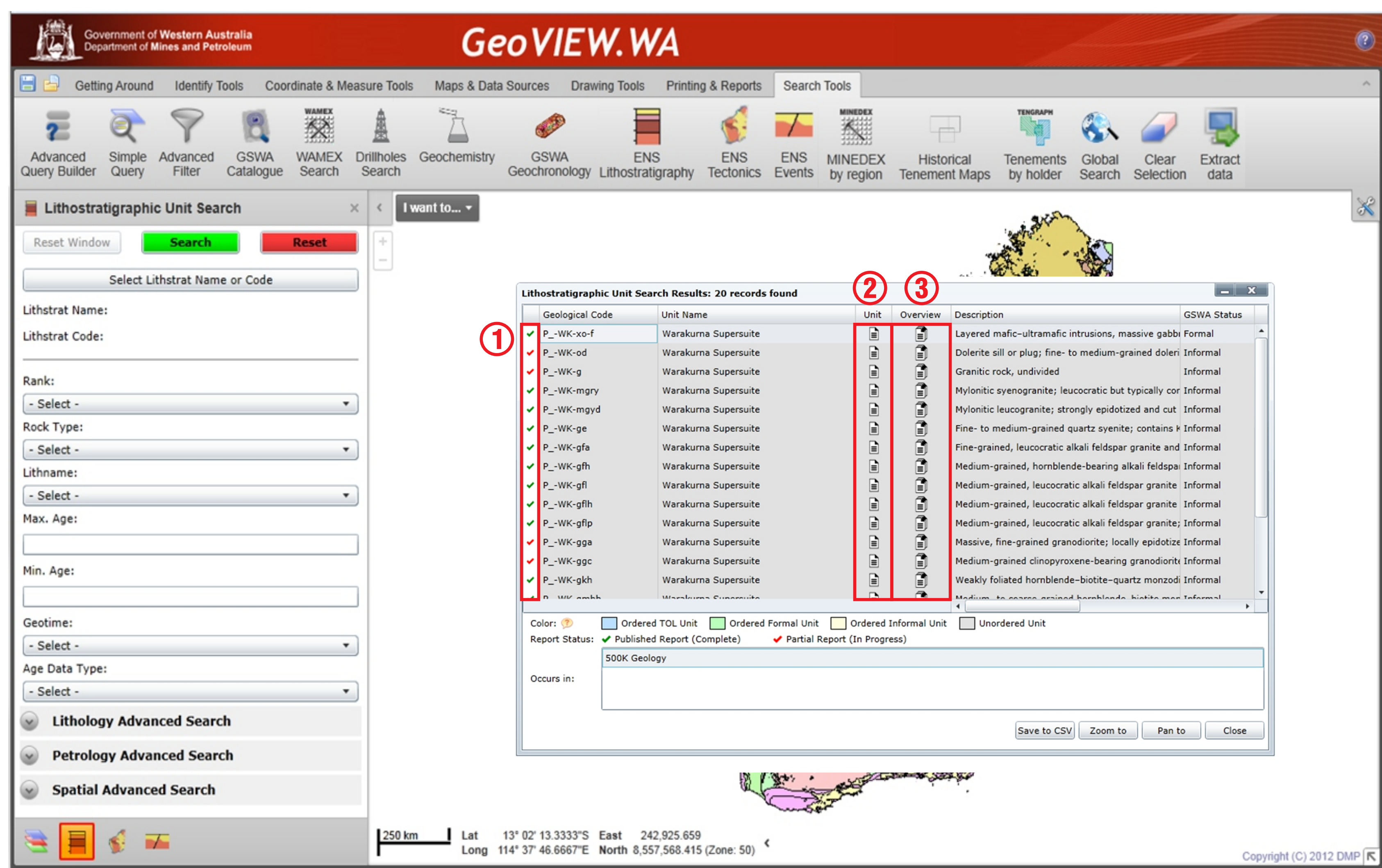
The Explanatory Notes System incorporates business rules that facilitate the sorting of rock units in a chronostratigraphic sequence. Spatial interrogation returns a list of rock units stratigraphically sorted (i.e. youngest at the top and oldest at the bottom) within individual tectonic units. Tectonic units themselves are ordered relative to each other in a single framework for the State — thereby providing the digital equivalent of the 'geological' column of a map legend.



Example of a published report for a single unit, the Ashburton Fold Belt D3a event. Note the hyperlinks to other units/events, and to PDFs of GSWA publications.



REPORTING



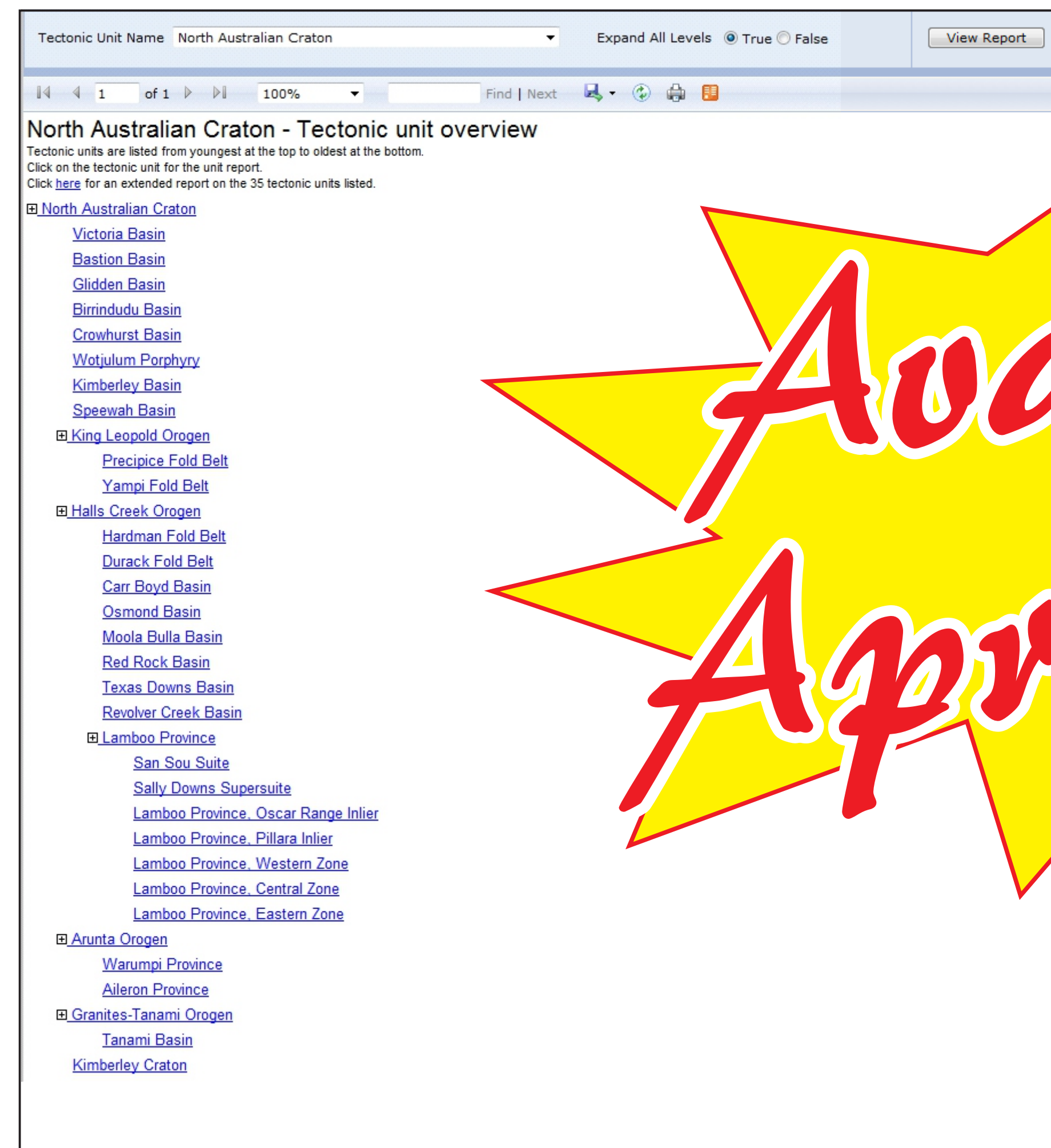
Colour-coded ticks (1 in figure above) indicate the status of the report:

- **GREEN TICK** - the report is fully written, edited to GSWA in-house standards, and published online
- **RED TICK** - only basic information is available online. This includes details such as the parent unit, rank, status (formal or otherwise), tectonic unit linkages, maximum and minimum ages. Reports are updated weekly.

Reports are available in two formats:

- **unit** report for a specific unit/event (2 in figure above, and example below left)
- **overview** reports consist of a table of contents for the selected unit/event, listing all its associated child units (3 in figure above, and example below right for the North Australian Craton).

Explanatory Notes reports can be saved as PDF or Microsoft Word documents. When browsing online, related units or events are hyperlinked and further reports generated on the fly. References to GSWA publications are also hyperlinked to the corresponding PDF document.



Example of an overview report: selecting the North Australian Craton returns a table of contents with all its constituent tectonic units. Each 'child' is hyperlinked to a single report for that unit.

Contact:

Angela Riganti 9222 3063
angela.riganti@dmp.wa.gov.au
Roger Hocking 9222 3590
roger.hocking@dmp.wa.gov.au



Government of Western Australia
Department of Mines and Petroleum

www.dmp.wa.gov.au

Geological Survey of
Western Australia

