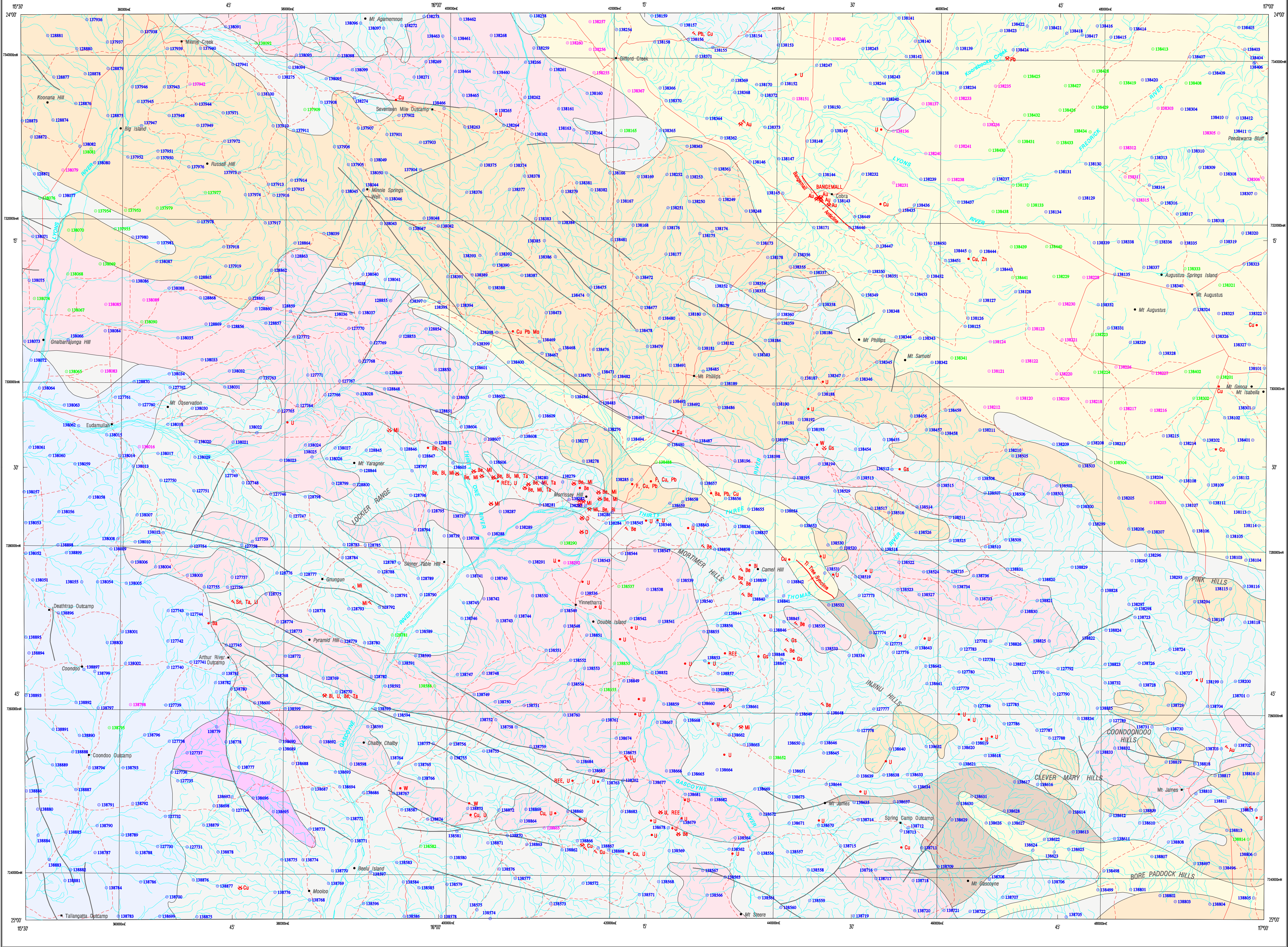


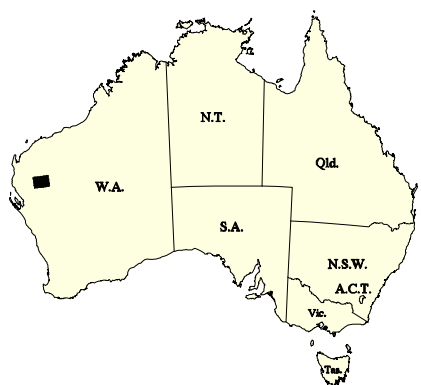
SAMPLE LOCATIONS



- SYMBOLS**
- Minor road
 - Track
 - Watercourse, ephemeral
 - Homestead
 - Locality
 - Mining centre
 - Mine, not being worked
 - Opencut
 - Opencut, not being worked
 - Prospect
 - Mineral occurrence
 - Barite, Beryl
 - Bismuth minerals
 - Copper, Dravite, Fluorite
 - Gold, Gemstones
 - Lead, Lithium
 - Mica, Molybdenum
 - Rare Earth Elements
 - Scheelite
 - Tantalite-columbite, Tin
 - Uranium, Zinc
- Sample point references**
- Stream sample
 - Sheetwash sample
 - Soil sample

GEOLOGICAL INTERPRETATION

- PALEOZOIC PERMIAN**
- Sandstone, siltstone, limestone; largely glaciene
- PROTEROZOIC**
- Bangerel Group: shale, sandstone, dolomite, chert, and siltstone; interbedded with dolomite silt
 - Mount James Formation: metamorphosed granite, conglomerate, chert, shale, sandstone, siltstone, and phyllite
 - Late-stage granitoid rock, granodiorite, adamellite, and pegmatite
 - Early-stage gneissic granitoid rock, granodiorite, granitic pegmatite, anorthosite, adamellite, and tonalite
 - Morrissey Metamorphic Suite: schist, phyllite, granofels, quartzite, chert, amphibolite, paragneiss, migmatite, calc-silicate gneiss, granite, metamorphosed greywacke, siltstone, and conglomerate
- ARCHAEO**
- Gneiss and gneissic granitoid rock
- Geological boundary**
- Fault
 - Anticline
 - Syncline



SHEET INDEX

WINNING POOL SF 50-13	EDMUND SF 50-14	TUREE CREEK SF 50-15
KENNEDY RANGE SG 50-1	MOUNT PHILLIPS SG 50-2	MOUNT EBERTON SG 50-3
WOORAMEL SG 50-5	GLENNBUROGH SG 50-6	ROBINSON RANGE SG 50-7

SAMPLE LOCATIONS

REGOLITH GEOCHEMISTRY SERIES

MOUNT PHILLIPS

SHEET SG 50-2

FIRST EDITION 1997

© Western Australia 1997

WARNING: Inks are water soluble and will fade with prolonged exposure to light

Edited by: D. Ferdinando and G. Loan

Cartography by: G. Jose

Topography from Australian Surveying and Land Information Group Sheet SG 50-2 and modified from geological field survey (1995)

This map was compiled digitally from the geochemical database held by the Geological Survey of Western Australia and stored in the ORACLE database management system; compiled and produced using a Geographic Information System, ArcInfo

This map is also available in digital form

Published by the Geological Survey of Western Australia. Copies of this map, or extracts from the database, are available from the Mining Information Centre, Department of Minerals and Energy, 100 Plain Street, East Perth, 6004. Phone (08) 9222 3450, Fax (08) 9222 3444



DEPARTMENT OF MINERALS AND ENERGY
L.C. RANDOLF, ACTING DIRECTOR GENERAL

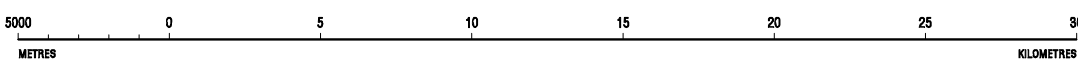


GOVERNMENT OF WESTERN AUSTRALIA
HON. NORMAN MOORE, M.L.C.
MINISTER FOR MINES



GEOLOGICAL SURVEY OF
WESTERN AUSTRALIA
PIETRO GUL, DIRECTOR

SCALE 1:250 000



TRANSVERSE MERCATOR PROJECTION

Grid lines indicate 20 000 metre interval of the Australian Map Grid Zone 50

Sampling by: A. Subramanya (GSWA), P. Penna, S. Keeling, and E. Mead (Geochemex Australia), 1995

Total sample sites: 1035; 57 sheetwash, 933 stream sediment, and 48 soil

Analyst: Andel Laboratories. Minimum sample size: 1.5 kg. Fraction of sample analysed: > 0.65mm < 2mm

Geological interpretation after S. J. Williams et al. (1983)

The recommended reference for this map: SANDERS, A.J., MORRIS, P.A., SUBRAMANYA, A.G., and FAULKNER, J.A., 1997. Mount Phillips, W.A. Sheet SG 50-2 - Sample locations. Western Australia Geological Survey, 1:250 000 Regolith Geochemistry Series, Plate 2