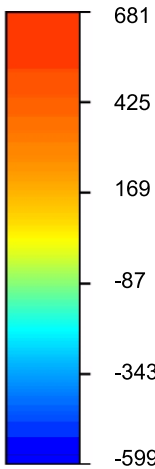
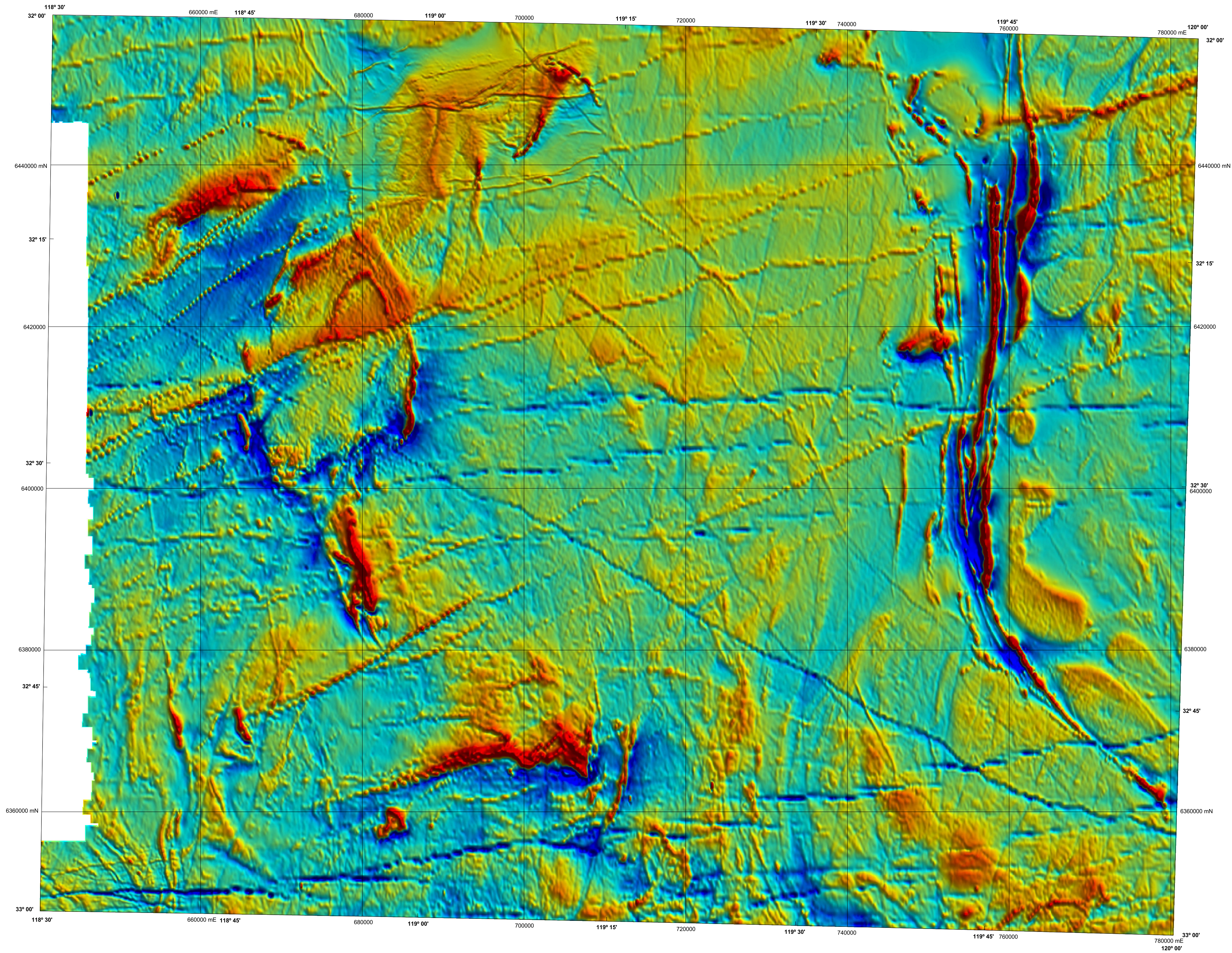


HYDEN

GEOLOGICAL SURVEY OF WESTERN AUSTRALIA

1:250 000 TOTAL MAGNETIC INTENSITY IMAGE

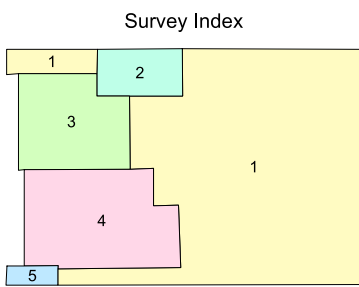
SHEET SI 50-4



nT
Residual values with the
International geomagnetic
reference field removed



SHEET INDEX		
KELLERBERRIN SI 50-3	SOUTHERN CROSS SI 50-10	BOODABINN SI 50-13
CORNBIN SI 50-2	HYDEN SI 50-4	LAKE JOHNSTON SI 51-1
DUMBLEYUNG SI 50-7	MERREDITH SI 50-6	WARRATHOPIE SI 51-5



The image is compiled from the five surveys that are listed below, and the areas covered by each are shown on the survey index.
The grid cell size is 80 m.

Survey ID	Survey name	Flight line spacing	Flight line direction	Ground clearance	Contractor	Date	Client
1	Southern Cross - Hyden	400 m	90° - 270°	60 m	UTS	2005	GSWA/GA
2	Gibb Rock	200 m	90° - 270°	40 m	UTS	1997	Aberfoyle Resources Ltd
3	Hyden North	400 m	90° - 270°	40 m	Fugro	1997	Aberfoyle Resources Ltd
4	Pingaring	400 m	90° - 270°	60 m	Kevron	1993	CRA Exploration Pty Ltd
5	Lake Grace	200 m	90° - 270°	60 m	Kevron	1995	North Ltd

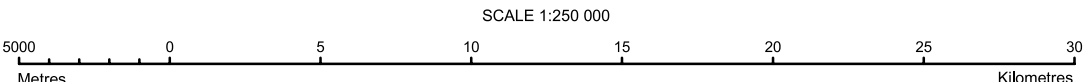


Department of
Industry and Resources
ALAN CARPENTER M.L.A.
MINISTER FOR STATE DEVELOPMENT
IAN LAMBERT
DIRECTOR GENERAL

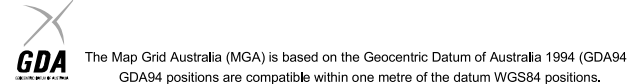
Geological Survey of
Western Australia
IAN LAMBERT
DIRECTOR



NGA
PRODUCT OF THE NATIONAL
GEOSCIENCE AGREEMENT



UNIVERSAL TRANSVERSE MERCATOR PROJECTION
HORIZONTAL DATUM: GEOCENTRIC DATUM OF AUSTRALIA
Grid lines indicate 20 000 metre interval of the Map Grid Australia Zone 50



GEOLOGICAL SURVEY OF WESTERN AUSTRALIA
TOTAL MAGNETIC INTENSITY IMAGE

HYDEN

SHEET SI 50-4

First Edition 2005
Version 1.0 - June 2005

© Western Australia 2005

WARNING: Inks are water soluble and will
fade with prolonged exposure to light