

WINNING POOL - MINILYA

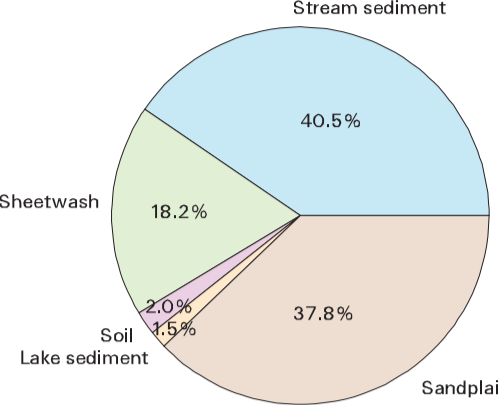
GEOLOGICAL SURVEY OF WESTERN AUSTRALIA

SHEET SF 50-13, part SF 49-16

SAMPLE LOCATIONS

Sample point reference

- 170001 Stream sediment
- 170010 Sheetwash
- 170110 Soil
- 170331 Lake sediment
- 170011 Sandplain



Total sample sites 1199

GEOLOGICAL INTERPRETATION

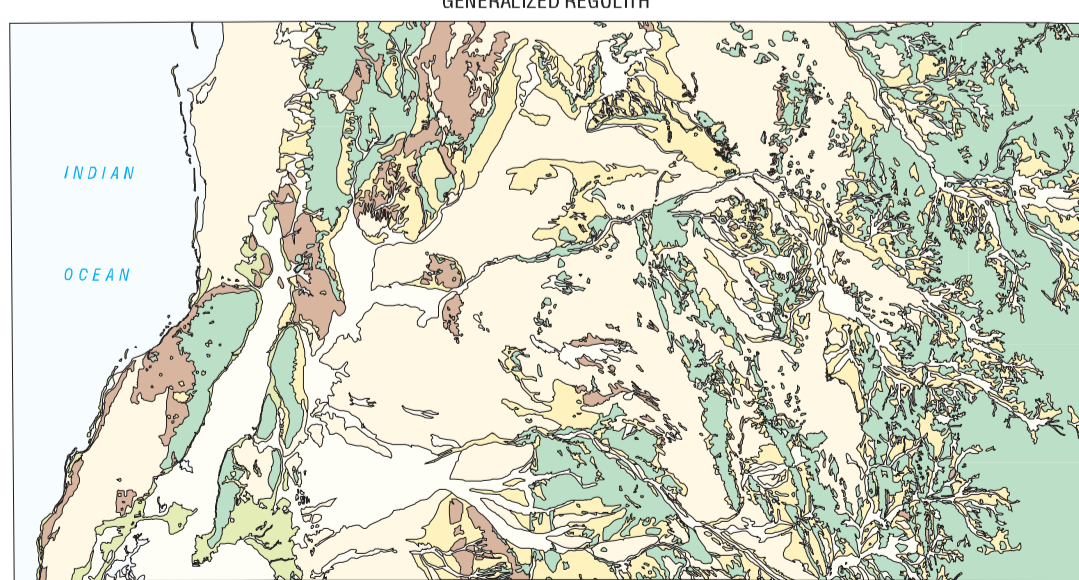
- Qm** BUNDARA CALCARENITE: shoreline, marine, and coastal eolian deposits; includes coastal lake deposits, commonly calcareous and gypsiferous
- Czn** LAMONT SANDSTONE and TREALLA LIMESTONE: marine limestone, and minor marine and continental sandstone
- Czp** CARDABIA CALCARENITE, GIRALIA CALCARENITE, and MERLINLEIGH SANDSTONE: Marine limestone and sandstone, with minor siltstone and basal green mud
- Kt** TOOLONGA CALCILUTITE, KOROJON CALCARENITE, and MIRIA FORMATION: Marine limestone, chalk, marl, and green mud; dominantly calcareous pelagic deposits
- Winning Group**
 - KWI** Marine and coastal shale, siltstone, and radiolite: dominantly siliceous pelagic deposits with basal sandstone and conglomerate
- Wooramel Group, Byro Group, and Kennedy Group**
 - P** Marine and continental siltstone, shale, and sandstone
- Lyons Group and CALLYTHARRA FORMATION**
 - PL** Marine and continental siltstone, shale, sandstone, and limestone: glacially influenced
 - DC** Marine to continental limestone, dolomite, sandstone, siltstone, shale, and conglomerate
- Edmund Group**
 - EME** Sandstone, siltstone, shale, dolomite, and chert: intruded by dolerite dykes and sills
- Gascoyne Complex**
 - Bj** Granodiorite, monzogranite, granite, and pegmatite; includes minor dolerite and gabbro
 - Bm** Schist, migmatite, gneiss, phyllite, quartzite, and minor calc-silicate rock, marble, and amphibolite (Morrissey Metamorphic Suite)

- Geological boundary
- Anticline
- Fault, exposed
- Syncline
- Fault, concealed or inferred
- Dolerite dyke

SYMBOLS

- Highway
- Formed road
- Track
- Watercourse
- Lake
- Pool, spring, bore, well
- Homestead
- Locality
- Diatremes and intrusions
- Open cut
- Prospect
- Mineral occurrence
- Barite
- Copper
- Gold
- Gypsum
- Lead
- Sand
- Uranium
- Zinc

Edited by N. Telford, K. Greenberg, and B. Loan
Cartography by M. Wierle
Topography from Australian Surveying and Land Information Group, and Department of Land Administration Sheets SF 50-13 and part SF 49-16
This map was compiled and produced using a Geographic Information System (GIS), and the data are available in digital form
Published by the Geological Survey of Western Australia. Copies of this map, or extracts of the data, are available from the Information Centre, Department of Minerals and Energy, 100 Plain Street, East Perth, W.A., 6004. Phone (08) 9222 3458. Fax (08) 9222 3444
Total sample sites: 1199: 485 stream sediment, 218 sheetwash, 24 soil, 18 lake sediment, and 454 sandplain
Analyst: Amstel Laboratories
Minimum sample size: 15 kg
Fraction of sample analysed: 0.45mm < 2mm
Geological interpretation after Myers and Hodges (1998)
The recommended reference for this map is:
SANDERS, A. J., 2001. Sample locations, Winning Pool - Minilya, W.A. Sheet SF 50-13 and part sheet SF 49-16. In: Geological mapping of the Winning Pool - Minilya 1:250 000 sheets by A. J. SANDERS and S. A. MCGUINNESS. Western Australia Geological Survey, 1:250 000 Regolith Geochemistry Series Exploratory Notes, Plate 1



SCALE 1:1 500 000

SCALE 1:250 000
UNIVERSAL TRANSVERSE MERCATOR PROJECTION
HORIZONTAL DATUM: GEOCENTRIC DATUM OF AUSTRALIA 1994
VERTICAL DATUM: AUSTRALIAN HEIGHT DATUM
Gold lines indicate 20 000 metre interval of the Map Grid Australia, Zone 50
The Map Grid Australia (MGA) is based on the Geocentric Datum of Australia 1994 (GDA94)
GDA94 positions are compatible within one metre of the datum WGS84 positions



SHEET INDEX			
MINILYA SF 50-13	WINNING POOL SF 50-13	ETRAHWA SF 50-14	MINILYA SF 50-13
MINILYA SF 50-13	WINNING POOL SF 50-13	ETRAHWA SF 50-14	MINILYA SF 50-13
MINILYA SF 50-13	WINNING POOL SF 50-13	ETRAHWA SF 50-14	MINILYA SF 50-13

INDEX TO 1:100 000 MAP SHEETS			
MINILYA 1:100 000	MINILYA 1:100 000	WINNING 1:100 000	TOUWEN 1:100 000
MINILYA 1:100 000	MINILYA 1:100 000	WINNING 1:100 000	TOUWEN 1:100 000
MINILYA 1:100 000	MINILYA 1:100 000	WINNING 1:100 000	TOUWEN 1:100 000

SAMPLE LOCATIONS

REGOLITH GEOCHEMISTRY SERIES
WINNING POOL - MINILYA
SHEET SF 50-13, part SF 49-16
FIRST EDITION 2001
© Western Australia 2001

WARNING: Inks are water soluble and will fade with prolonged exposure to light