

WESTERN AUSTRALIA

Selected exploration and mining highlights

EXPLORATION
INCENTIVE
SCHEME

Geological Survey of
Western Australia

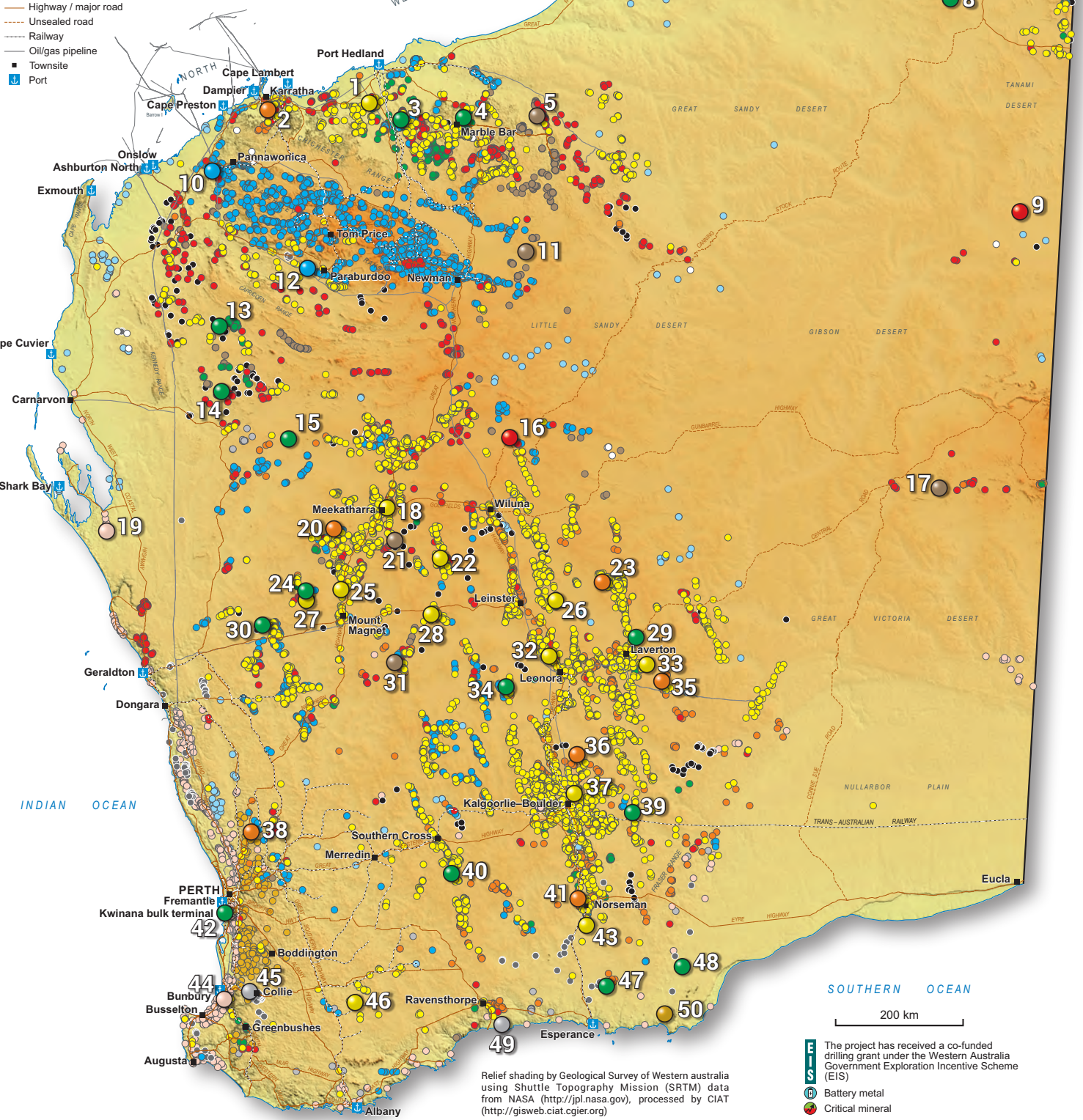


Mines, deposits and prospects

- Iron (Fe)
 - Gold (Au), Silver (Ag), Stibnite (Sb)
 - Alumina (Al), Kaolin
 - Heavy mineral sands (HMS), Silica
 - Nickel (Ni), Cobalt (Co), Platinum (PGE), Chromium (Cr)
 - Copper (Cu), Lead (Pb), Zinc (Zn)
 - Lithium (Li), Rare Earth Elements (REE), Tin (Sn), Tantalum (Ta)
 - Vanadium (V), Manganese (Mn), Titanium (Ti), Tungsten (W), Molybdenum (Mo)
 - Phosphate, Potash and Salt
 - Graphite
 - Diamond
 - Coal
 - Uranium
- Other industrial and construction commodities and minor mineral occurrences not shown

Compound elements and other abbreviations

- 3E Gold + Platinum + Palladium
- 5E Platinum + Palladium + Gold + Rhodium + Iridium
- g/t Grams per tonne
- HMC Heavy mineral concentrate
- Li₂O Lithium oxide
- m Metre
- Moz Million ounces
- Mt Million tonnes
- mtpa Million tonnes per annum
- Nb₂O₅ Niobium pentoxide
- Nd₂O₃ Neodymium oxide
- Ni Eq Nickel Equivalent
- oz Ounces
- oz/t Ounces per tonne
- P₂O₅ Phosphorus pentoxide
- Pd Eq Palladium Equivalent
- PFS Pre Feasibility Study
- PGE Platinum group of elements
- PGM Platinum group of minerals
- ppm Parts per million
- Pr₂O₃ Praseodymium oxide
- Rb₂O Rubidium oxide
- Rb₂O Rubidium oxide
- RC Reverse circulation
- t Tonnes
- Ta₂O₅ Tantalum pentoxide
- ThO₂ Thorium oxide
- TiO₂ Titanium oxide
- TREO Total rare earth oxide
- U₃O₈ Triuranium octoxide (Uranium oxide)
- V₂O₅ Vanadium pentoxide



Relief shading by Geological Survey of Western Australia using Shuttle Topography Mission (SRTM) data from NASA (<http://seamless.usgs.gov>), processed by CIAT (<http://gisweb.ciat.cgiar.org>)

The project has received a co-funded drilling grant under the Western Australia Government Exploration Incentive Scheme (EIS)

● Battery metal

● Critical mineral

1	Mallina	Gold Pre-feasibility	A PFS was released with an estimated production of 6.4 Moz over a 13.6-year life of mine for the Mallina Gold project along with a maiden Probable Ore Reserve of 103 Mt at 1.5 g/t Au for 5.1 Moz for the Hemi deposit. Extensional drilling on the regional Mallina Project at Ducon intersected 359.4 m at 1.2 g/t Au. <i>De Grey Mining Ltd</i>
2	Mt Sholl	Nickel Exploration	Near surface, Ni-Cu-PGE sulfide mineralization from the Mt Sholl B2 deposit was confirmed with assays including 19.58 m at 1.67% Ni Eq (0.67% Ni, 1.18% Cu, 262 ppm Co, 5.90 g/t Ag and 1.20 g/t 3E). <i>Raiden Resources Ltd</i>
3	Mt York Lithium	Lithium-Tantalum Exploration	Maiden RC drilling into spodumene-bearing pegmatites at Mt York returned high tantalum values in the intersected pegmatite under Lucky Sump . The best assay result was 7 m at 605 ppm Ta with corresponding lithium values of 7 m at 146 ppm Li (0.03% Li ₂ O). <i>Kairos Minerals Ltd</i>
4	Marble Bar	Lithium Updated Mineral Resource	A 71% increase in the lithium Mineral Resource estimate to 18 Mt at 1.0% Li ₂ O was announced at Marble Bar from the Archer pegmatite corridor, and includes the extension into recently identified Lantern . The project now has a prospective strike length of 25 km and contains four additional prospective pegmatite corridors. <i>Global Lithium Resources Ltd</i>
5	Braeside West - Woodie Woodie North	Manganese Exploration	A near surface zone of manganese mineralization was discovered at Area 42 . Preliminary results show at least 74 m of multiple zones of manganese enrichment. This represents the largest known intersection of manganese-rich mineralization in the Woodie Woodie North area to date. Continued discovery of thicker, deeper zones of mineralization at Area 42 , from drilling include Nathan's Flat , Drew's Find , and Dale's Patch . <i>Accelerate Resources Ltd</i>
6	Panton	PGE Feasibility	Updated Mineral Resource estimate for the Panton PGM-Nickel Project stands at 129 Mt at 1.20 g/t PGM 3E, 0.19% Ni, and 154 ppm Co (1.66 g/t Pd Eq). This represents a 108% increase in contained PGM 3E while the contained nickel resource has increased by 526%. <i>Future Metals NL</i>
7	Halls Creek - Lambao	PGE Operating	Step out drilling at Lambao Nickel-PGE returned strong PGE, nickel and cobalt assays. In addition, coincident rhodium and iridium grades have been returned in the northern extensions of the Pt+Pd+Au zones drilled to date. New PGE (3E) results include 11 m at 1.11 g/t Pt +Pd +Au (3E) including 4 m at 2.76 g/t PGE (3E), 0.143 ppm Rh and 0.134 ppm Ir. <i>Pantoro Ltd</i>
8	Cummins Range	REE Exploration	Assay results from Cummins Range returned wide intercepts of rare earths and phosphate mineralization including 455 m at 0.5% TREO, 5% P ₂ O ₅ , and 373 m at 0.3% TREO, 4% P ₂ O ₅ , and 28 ppm U ₃ O ₈ , confirming the large-scale potential of the area. A Scoping Study considered the utilization of grid-connected hydroelectric power for refinery operations, a potential world first for rare earth refineries. Commencement of a PFS was approved. <i>RareX Ltd</i>
9	West Arunta	Copper + gold + REE Exploration	Maiden drilling at Luni confirmed the discovery of a new ~3 km long niobium-REE mineralized carbonate system with the best intersection of 4 m at 2.88% Nb ₂ O ₅ , 0.68% TREO, 10.70% P ₂ O ₅ . Drilling at Pachpadra intersected 54 m at 0.62% Nb ₂ O ₅ , 0.18% TREO, 3.85% P ₂ O ₅ , while the P2 Target at Pachpadra, confirmed a weathered, enriched high-grade niobium-tantalum mineralization with grades up to 1.12% Nb ₂ O ₅ , 1.05% TREO and 431 ppm Ta ₂ O ₅ . <i>WAI Resources Ltd</i>
10	Yarraloola	Iron Ore Pre-feasibility	An updated Mineral Resource estimate for the Robe Mesa deposit increased 20% to 45.2 Mt at 56% Fe (62.7% Fe, Calcined). The Indicated Resources now account for 36 Mt, or 80%, of the total Mineral Resource. <i>CZR Resources Ltd</i>
11	Flanagan Bore	Manganese Exploration	Resource update for the Flanagan Bore Project of 171 Mt at 10.3% Mn, which is a 64% increase. Results from drilling along 2000 m of strike between the F53 and LH1 deposits discovered thick, continuous higher grade zones of manganese-enriched shale. <i>Black Canyon Pty Ltd</i>
12	Paraburdoo - Western Range	Iron Ore Under Construction	Rio Tinto and Baowu Steel Group entered into a joint venture to develop the Western Range Project in the Pilbara. Once in full production, the expected production capacity of 25 mtpa of iron ore will help sustain production of the Pilbara Blend from the existing Paraburdoo mining hub. Construction is expected to begin early in 2023 with first production anticipated in 2025. <i>Rio Tinto Ltd, China Baowu Steel Group Co. Ltd</i>
13	Mangaroon	REE Exploration	The maiden Mineral Resource estimate for the ~30 km Yin REE Ironstone Complex at Mangaroon is at 14.36 Mt at 1.13% TREO based on 117 holes covering only ~10% of the Yin Ironstone Complex. <i>Dreadnought Resources Ltd</i>
14	Mick Well	REE Exploration	Drilling at the Mick Well Project returned broad intervals of a new style of REE mineralization which includes kaolinite clays and weathered bedrock. Results include 48 m at 1.26% Nb ₂ O ₅ , 0.25% TREO, 1.25% P ₂ O ₅ , 0.18% Nb ₂ O ₅ , 0.18% TREO, 3.85% P ₂ O ₅ , while the P2 Target at Pachpadra, confirmed a weathered, enriched high-grade niobium-tantalum mineralization with grades up to 1.12% Nb ₂ O ₅ , 1.05% TREO and 431 ppm Ta ₂ O ₅ . <i>WAI Resources Ltd</i>
15	Mt Clere	REE Exploration	The maiden Mineral Resource estimate for Tower at the Mt Clere Project is 101 Mt at 840 ppm TREO. <i>Krakatoa Resources Ltd</i>
16	Earaheedy	Copper + lead + zinc Exploration	Drilling at Chinook intersected high-grade copper and silver, with molybdenum, tungsten and nickel in a newly recognized polymetallic system. Drilling results from Navajo include 1 m at 11.03% Zn + Pb and from Tonka include 5 m at 14.14% Zn + Pb. The Chinook-Tonka-Navajo mineralization now occurs over an 18 km strike length and is open in all directions. <i>Rumble Resources Ltd</i>
17	Mount Squires	Tungsten-Molybdenum Exploration	EIS drilling intersected significant grades of gold and molybdenum at Duchess . At Duchess East , drilling had results including 7 m at 902 ppm Mo including 1 m at 3220 ppm (0.32% Mo) and 1.17% Pb. <i>Caspin Resources Ltd</i>
18	Side Well	Gold + Copper Exploration	Drilling at Mulga Hill intersected 15 m at 35.82 g/t Au including 6 m at 83.58 g/t Au and 1 m at 121.00 g/t Au. Drilling at Ironbark intersected 5 m at 51.65 g/t Au including 1 m at 193.50 g/t Au. <i>Great Boulder Resources Ltd</i>
19	Coburn	Heavy Mineral Sands	The Coburn mine was commissioned with processing and commercial production of the first Heavy Mineral Concentrate (HMC). The first shipment of ~6500 metric tonnes of HMC, containing zircon sand, titanium ores and rare earth monazite was shipped from the Port of Geraldton. <i>Strandline Resources Ltd</i>
20	Weld Range	PGE Operating	Updated Mineral Resource estimate at Parks Reef now contains 143 Mt for 6.0 Moz at 1.30 g/t 5E PGM (Pt + Pd + Au + Rh + Ir) representing a doubling of contained 5E PGM. Drilling at Parks Reef Central Zone intersected numerous high-grade results and confirm the continuity of the mineralization along the full 15 km of the orebody's strike length. An EIS hole provided evidence that the grades and widths persist down to at least 500 m. <i>Podium Minerals Ltd</i>
21	Murchison Technology Metals	Vanadium-Titanium Feasibility	An Integration Study for the Murchison Technology Metals Project merged the Yarrabubba deposit into the mine plan. The updated Yarrabubba Ore Reserve estimate of 15.88 Mt at 0.87% V ₂ O ₅ and 10.03% TiO ₂ , increased the global Ore Reserve estimate to 44.48 Mt at 0.89% V ₂ O ₅ , extending the potential mine life to 25 years, with the dual revenue streams of vanadium pentoxide and ilmenite. <i>Technology Metals Australia Ltd</i>
22	Gum Creek	Gold Exploration	Drilling at Kingfisher Deeps intersected broad, high-grade gold intercepts including 15 m at 28.5 g/t Au with 2 m at 189.8 g/t Au. Shallow high-grade gold intercepts from Howards include 9 m at 16.7 g/t Au including 1 m at 147.5 g/t Au and 5 m at 22.9 g/t Au including 1 m at 110.5 g/t Au. <i>Horizon Gold Ltd</i>
23	Duketon	Nickel Exploration	RC holes drilled within the oxide zone above the Rosie resource in Duketon intersected 17 m at 1.02 g/t Pt +Pd, 0.18% Ni and 0.27% Cu. <i>Duketon Mining Ltd</i>
24	Niobe	Lithium Exploration	A maiden lithium and rubidium Mineral Resource estimate of 4.6 Mt at 0.17% Rb ₂ O and 0.07% Li ₂ O was released for the Niobe Rubidium-Lithium Project, which is one of the highest grade undeveloped rubidium deposits globally. <i>Aldora Resources Ltd</i>

25	Cue-Moyagee	Gold Pre-feasibility	Drilling at White Heat-Mosaic intersected 7 m at 149.7 g/t Au including 1 m at 1040 g/t Au. High-grade near surface gold mineralization was intersected along the Waratah Trend with 4 m at 29.9 g/t Au including 1 m at 114 g/t Au. Drilling at Big Sky continues to deliver strong high-grade gold results. Drilling at West Island continues to intersect and identify new gold lodes with results including 2 m at 66 g/t Au with 0.6 m at 219 g/t Au. <i>Musgrave Minerals Ltd</i>
26	Darlot	Gold Operating	Drilling results from Darlot Underground at the Centurion Lode yielded exceptional intercepts including 1.1 m at 1521.5 g/t Au (equivalent to 53 oz/t). Drilling at the St George openpit satellite deposit returned significant intersections including 3 m at 2999.3 g/t Au (equivalent to 105 oz/t). <i>Red 5 Ltd</i>
27	Dalgarganga-Gilbeys	Gold Exploration	Drilling at Gilbeys North intersected the new Never Never Lode with results including 12 m at 34.5 g/t Au including 0.47 m at 643 g/t Au, the deepest and highest grade intercept to date. The Gascoyne Group Mineral Resource estimates are now 36.74 Mt at 1.16 g/t Au for 1.4 Moz. <i>Gascoyne Resources Ltd</i>
28	Central Sandstone	Gold Exploration	Drilling results received from Two Mile Hill had the best result of 352.8 m at 1.5 g/t Au, with mineralization continuing beyond that interval with a further 145.2 m at 0.5 g/t Au. <i>Aurumin Ltd</i>
29	East Laverton	REE Exploration	Rare earth element mineralization within saprolitic clays were identified at Pt Kildan with results including 15 m at 1461 ppm TREO with continuity of mineralization indicated in excess of 1.2 km. <i>Mt Monger Resources Ltd</i>
30	Waratah Well	Lithium Exploration	Drilling at Waratah Well confirmed the presence of high-grade lithium down dip below the depth of weathering and possible lithium depletion zone, with results including 14 m at 1.0% Li ₂ O and 10 m at 1.4% Li ₂ O. <i>Zenith Minerals Ltd</i>
31	Manindi	Titanium-Vanadium-Magnetite + Nickel + Copper + Cobalt and Lithium Exploration	Drilling, testing the 3 km long Manindi West target, confirmed the titanium-vanadium-magnetite discovery at Brushtail-Manindi West. Drilling intersected 129 m at 0.23% V ₂ O ₅ , 23.3% Fe and 11.5% TiO ₂ with high-grade titanium including intersections up to 24% TiO ₂ . Maiden RC drilling also confirmed a new lithium and rubidium discovery at Bandicoot , intersecting 7 m at 82% Li ₂ O, 0.31% Rb. <i>Metals Australia Ltd</i>
32	Tarmoola - King of the Hills	Gold Commenced Operating	The first gold pour at the 16-year life of mine King of the Hills was completed. Mining and processing operations have reached steady-state and commercial production has now commenced. <i>Red 5 Ltd</i>
33	Merolia	Gold Exploration	Bonanza grades of up to 1 m at 478 g/t peak gold assay and visible gold was intersected at Burtville East . <i>Panther Metals Ltd</i>
34	Mt Ida	Lithium Maiden Resource Estimate	A maiden Mineral Resource estimate of 12.7 Mt at 1.2% Li ₂ O and 207 ppm Ta ₂ O ₅ was announced for Sister Sam , Timoni and Sparrow . Multiple large, shallow dipping pegmatites were also discovered at Sparrow North , intersecting 4 m at 1.10% Li ₂ O and 194 ppm Ta ₂ O ₅ . <i>Red Dirt Metals Ltd</i>
35	Coglia	Nickel Exploration	A maiden Inferred Mineral Resource estimate was released for Coglia comprising 70.6 Mt at 0.7% Nickel and 460 ppm Cobalt. <i>Panther Metals Ltd</i>
36	Carr Boyd	Nickel Exploration	A maiden Mineral Resource estimate of 0.86 Mt at 0.66% Ni and 0.42% Cu, >12 000 oz Pt and Pd and ~55 000 oz Ag was released for T5 - Carr Boyd . The upgraded Mineral Resource estimate for 5A is 0.124 Mt at 1.9% Ni, 0.15% Cu, 0.04% Co. Drilling at Bronhill intersected 6.23 m at 0.6% Ni and 0.7% Cu while the initial drillhole at Gossan Hill intersected 3 m at 0.6% Ni and 0.3% Cu, 0.8 g/t 3E. <i>Estrella Resources Ltd</i>
37	Kanowna - Golden Valley	Gold Operating	Red Hill drilling results include 343.3 m at 1.3 g/t Au including 0.7 m at 233.7 g/t Au, 161.8 m at 2.8 g/t Au including 0.5 m at 655.9 g/t Au, and 0.1 m at 6.9 g/t Au including 0.2 m at 1001.6 g/t Au. Joplin is an emerging new discovery with drilling results including 1 m at 126.0 g/t Au. <i>Northern Star Resources Ltd</i>
38	Serradella	Nickel Exploration	Multiple mineralized zones were reported at Serradella with results returning two wide mineralized zones of 25 m. Significant rhodium mineralization was also reported with a peak rhodium grade of 0.69 g/t. Significant PGE mineralization was discovered at Vicia . <i>Caspin Resources Ltd</i>
39	Manna	Lithium Exploration	An updated Mineral Resource estimate delivered for Manna has resulted in a 230% increase to 32.7 Mt at 1.0% Li ₂ O. Manna remains open in all directions and has an ongoing resource expansion drilling program. <i>Global Lithium Resources Ltd</i>
40	Split Rocks Lithium	Lithium Exploration	The first diamond core assays received from the Rio Pegmatite returned significant lithium over two intervals totalling 49 m in thickness. The assay results include 26 m at 1.2% Li ₂ O including 13 m at 1.9% Li ₂ O (upper zone) and 23 m at 0.8% Li ₂ O including 8 m at 1.3% Li ₂ O (lower zone). <i>Zenith Minerals Ltd</i>
41	Norseman	PGE Operating	Drilling confirmed consistent high-grade palladium mineralization at Callisto . The first occurrence of significant cobalt and the first massive sulfide intersection to date defines a new style of magmatic nickel-copper-cobalt. Rhodium assays also increase with depth in high-grade palladium-platinum seams. Drilling at Callisto North confirmed a new style of mineralization with nickel sulfide contained within a mafic-ultramafic intrusion and lacking PGE metals. <i>Galileo Mining Ltd</i>
42	Greenbushes-Kwinana	Lithium Operating	Tianqi Lithium Energy Australia declared commercial production from Train 1 of the Kwinana Lithium Hydroxide Refinery . Production will continue to ramp up over the course of 2023. <i>IGO Limited, Tianqi Lithium Corporation</i>
43	Central Norseman	Gold Operating	The first gold pour was completed at the Norseman Gold Project . Production is now underway. <i>Pantoro Ltd</i>
44	Boyatup	Silica Sand	A maiden Mineral Resource estimate of 60 Mt at 97.8% SiO ₂ was released for the Boyatup Silica Sand Project . <i>VRX Silica Ltd</i>
45	Collie Graphite Hub	Graphite Under Development	The Collie Graphite Hub was successfully commissioned in September and achieved the first product from the pilot micronizing and spheroidizing plant. <i>International Graphite Ltd</i>
46	Katanning	Gold Pre-feasibility	The PFS confirms a 1.28 Moz Maiden Ore Reserve at the Katanning Gold Project and highlights it as one of the largest undeveloped free-milling openpit gold projects in Western Australia, with low capital costs and substantial scope to increase the total scale of this project in the near term. <i>Ausgold Ltd</i>
47	Mt Ridley	REE Exploration	Regional drilling at Mt Ridley Rare Earth Project along traverses of up to 40 km in length intersected wide zones of significant (>500 ppm) TREO identifying Mia , Butch , Fabienne , Vincent and Jules prospects. Additional significant REE mineralization includes 23 m at 3688 ppm TREO at Tyrell's . <i>Mount Ridley Mines Ltd</i>
48	Splinter Rock	REE Exploration	Full Back , Wing , Scrum , Prop , Centre and Flanker were discovered at the Splinter Rock Project with assays up to 1215 ppm TREO at Full Back , up to 2490 ppm TREO at Wing , up to 2267 ppm TREO at Centre , up to 2227 ppm TREO at Flanker , up to 2170 ppm TREO at Prop , and up to 1565 ppm TREO at Scrum . 52% of assayed holes had grades greater than 750 ppm TREO. <i>ODG Metals Ltd</i>
49	Springdale	Graphite Exploration	There have been numerous new discoveries at the Springdale Graphite Project including Springdale Central , SE1 , and Springdale Far West . Stand out results from Springdale Far West include multiple zones of shallow graphite mineralization with 11 m at 16.1% TGC including 5 m at 27.8% TGC. <i>International Graphite Ltd</i>
50	Boomerang	Kaolin	A maiden Mineral Resource estimate of 93.3 Mt of kaolinized granite was released for Boomerang . Commercialization studies using metakaolin in the green construction industry also commenced. <i>Kula Gold Ltd</i>

For more information, contact: minedex@dmirs.wa.gov.au

WESTERN AUSTRALIA – THE WORLD’S PREMIER MINING STATE

Fees, securities and minimum expenditures[#]

Licence/ Lease	Maximum area	Term	Application fee	Rent	Security	Minimum annual expenditure*
Prospecting Licence	200 ha	Four years (then four-year extension)	\$413	\$3.50 per ha Min: \$35	\$5k each	\$40 per ha Min: \$2k
Special Prospecting Licence for Gold	10 ha (maximum)	Min three months (then three-month extension up to four years)	\$413	\$35	\$5k each	\$2k
Exploration Licence	70 blocks normally (200 blocks in greenfields areas)	Five years (then two-year extension)	1 Block \$435 > 1 Block \$1660	Per block Years 1–3 \$153 Years 4–5 \$275 Years 6–7 \$376 Years 8+ \$711	\$5k each	Years 1–3 ≤ 20 blocks Min: \$10–20k > 20 blocks \$1k per block
Mining Lease Minerals Dissolved in Brine	Not applicable	21 years renewable	N/A	Years 1–5 \$3 per ha	\$5k each	\$100 per ha Min: \$5k if <5 ha otherwise \$10k
Mining Lease	Not applicable	21 years renewable	\$608	\$24 per ha	\$5k each	\$100 per ha Min: \$5k if <5 ha otherwise \$10k
General Purpose Lease	10 ha or larger with Minister's approval	21 years renewable	\$608	\$22 per ha	\$5k each	Covenant in lieu
Miscellaneous Licence	Not applicable	21 years renewable	\$608	\$22 per ha	\$5k each	Covenant in lieu

[#] www.dmp.wa.gov.au/Documents/Minerals/Minerals-Feesandcharges_2022-23.pdf

* includes rent payments

ha = hectare (100 x 100 m)

Block = 3 km² approx.

Examples of royalty rates

The full list of royalty rates is in Regulation 86 of the Mining Regulations, 1981 or the relevant State Agreement

Limestone (construction/metallurgical)	\$0.73 – \$1.17 per tonne
Coal	7.5% if exported
Bauxite	7.5%
Copper	5% (concentrate); 2.5% (metal)
Nickel in concentrate	\$ royalty = 2.5 x D x f/100 D: % Ni in concentrate f: Ni metal price per tonne
Lithium minerals	5%
Iron ore (DSO) fines/lump	7.5%
Beneficiated iron ore and magnetite	5%
Gold (2500 oz exempt)	2.5% of metal value
Zircon concentrate	5% of sales value

Tonnage-based rates Sales value-based rates

DSO = Direct Shipping Ore

JAN 2023

Geoscience and resource information

All free via (www.dmirs.wa.gov.au)

- Maps and reports (www.dmirs.wa.gov.au/ebookshop)
- Live databases of mineral deposits (www.dmirs.wa.gov.au/minedex)
- Mineral exploration reports (www.dmirs.wa.gov.au/wamex)
- Download maps and databases (<https://dasc.dmirs.wa.gov.au>)
- Online GIS facility (www.dmirs.wa.gov.au/geoview)
- Geophysical data and images (www.dmirs.wa.gov.au/geophysics)
- Geochemical data

Exploration and mining licence information

All free via (www.dmirs.wa.gov.au)

- Online map service (TENGRAPH Web) continuously updated showing location of all licences and applications
- Full ownership and other data for all licences available via online system, Mineral Titles Online (MTO)
- Transparent licence system where all licence information can be viewed by anyone

Comprehensive and well-known mining legislation

Free download of Mining Act and Regulations from (www.legislation.wa.gov.au)

This site also has current copies of all other Western Australian legislation

- Titles are for 'all' minerals*
- First in time application system
- Security of tenure when moving from exploration to mining title
- Mining title can be granted at pre-feasibility stage
- Annual exploration expenditure commitments
- Annual 'rental' fee for licence
- Annual reporting of activities

Exploration licences

- Graticular system used based on a 'block' that is 1 minute of latitude x 1 minute of longitude
- Maximum number of blocks:
 - in greenfields areas: 200
 - in non-greenfields areas: 70
- If after five years the licence is extended, 40% of the area must be surrendered at end of 6th year

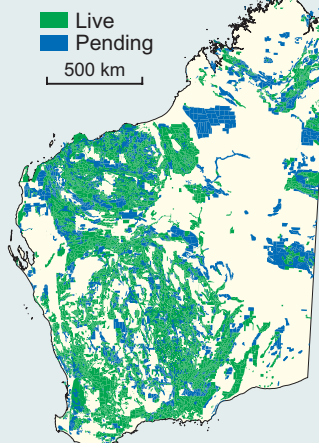
Mining lease applications

There are two ways to submit applications:

- 'Mining proposal' involving environmental assessment before grant
- Mineralisation Report and Supporting Statement, or Resource Report and Supporting Statement. Mining proposal and environmental assessment submitted for approval at later date

* Legislation gives Ministerial discretion to restrict minerals or refuse in public interest.
Rules of procedural fairness apply

MINING TENEMENTS



as at February 2023

Taxes and mining royalties

Mining tax

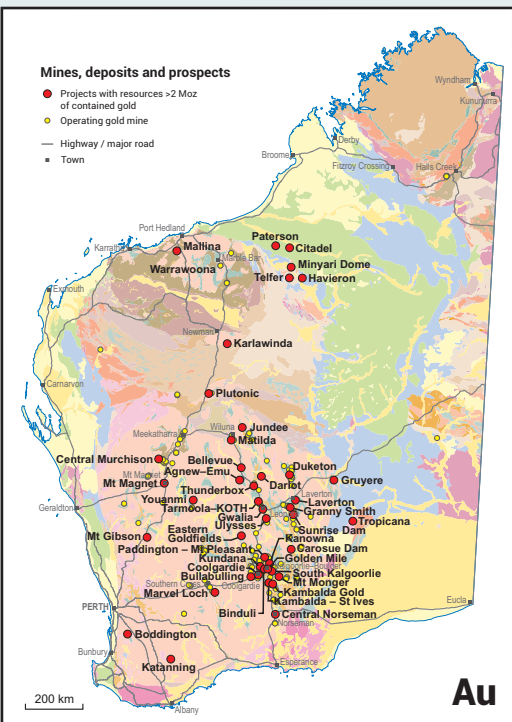
- Normal company tax rate ranges between 27.5% and 30% on profit
- Goods and services tax of 10%

Royalties on production

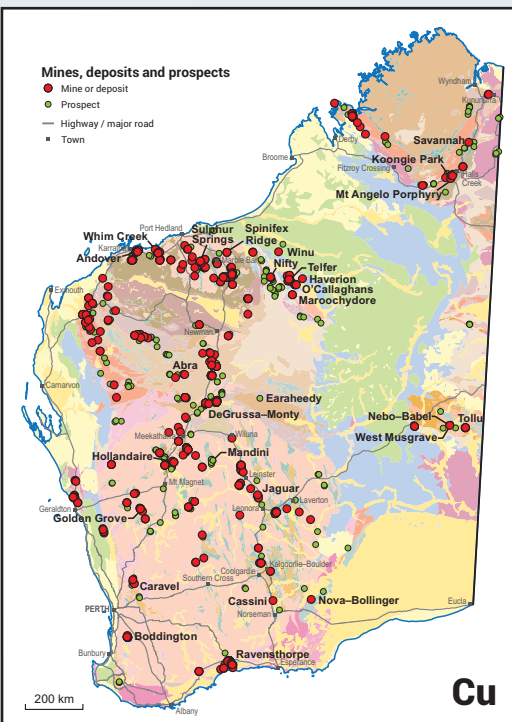
- The Mining Act and Regulations or the various State Agreement Acts set out royalty provisions and royalty rates
- The amount of royalty paid is a deduction for income tax assessment
- The amount of royalty paid can be reduced by allowable costs involved in transporting the mineral to the purchaser

Royalties are levied on the basis of:

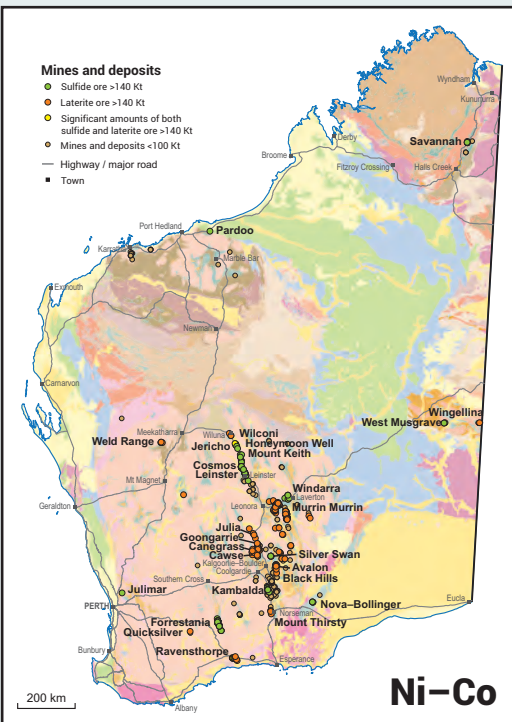
- Tonnage (rock, gravel, limestone)
- Sales value (most metals, gems, diamonds)



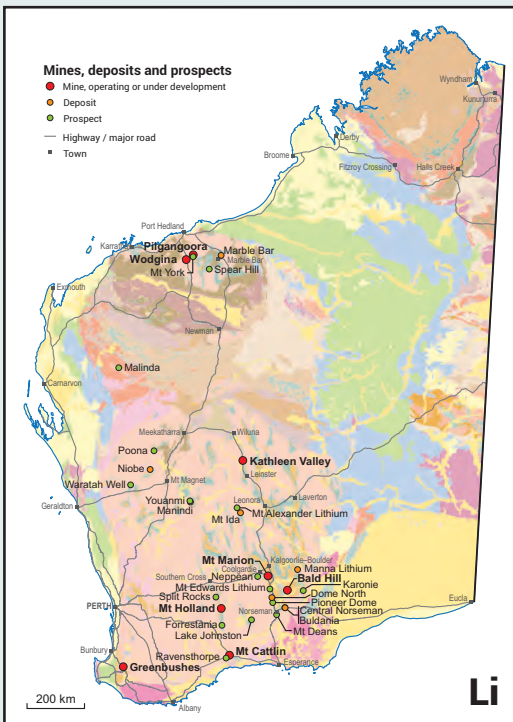
Au



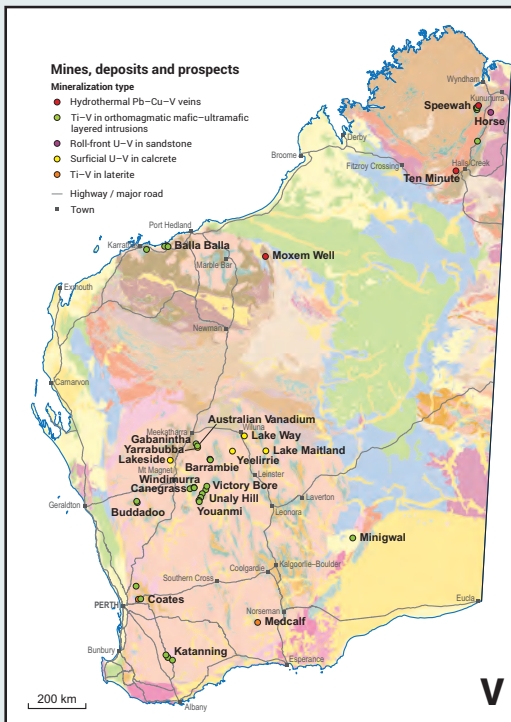
Cu



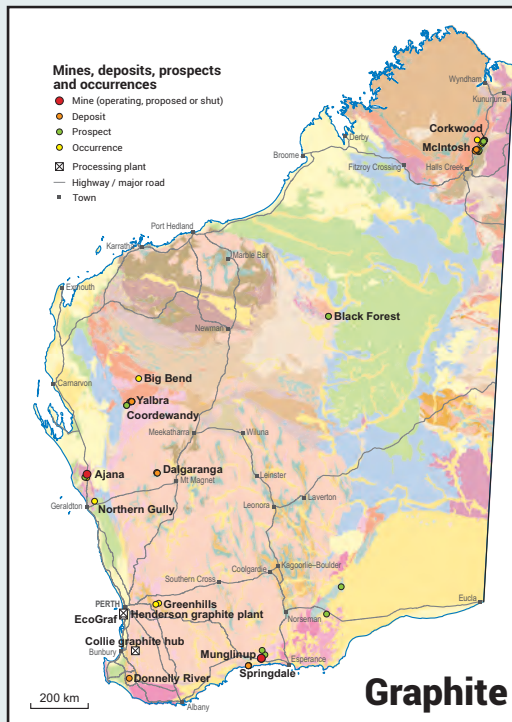
Ni-Co



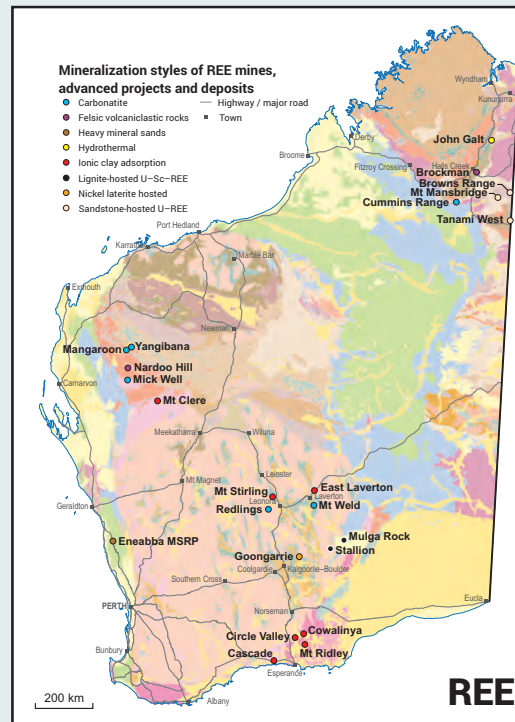
Li



V



Graphite



REE

Department of Mines,
Industry Regulation and Safety
(the principal mineral industry regulator)
www.dmirs.wa.gov.au

Department of Jobs, Tourism, Science and Innovation
(coordinates the development of major resource
and infrastructure projects)
www.jtsi.wa.gov.au

Western Australian State Law Publisher
(free downloads of WA legislation)
www.legislation.wa.gov.au

Department of Foreign Affairs and Trade
www.dfat.gov.au

Australian Tax Office
www.ato.gov.au

Austrade
(Australian Trade Commission)
www.austrade.gov.au