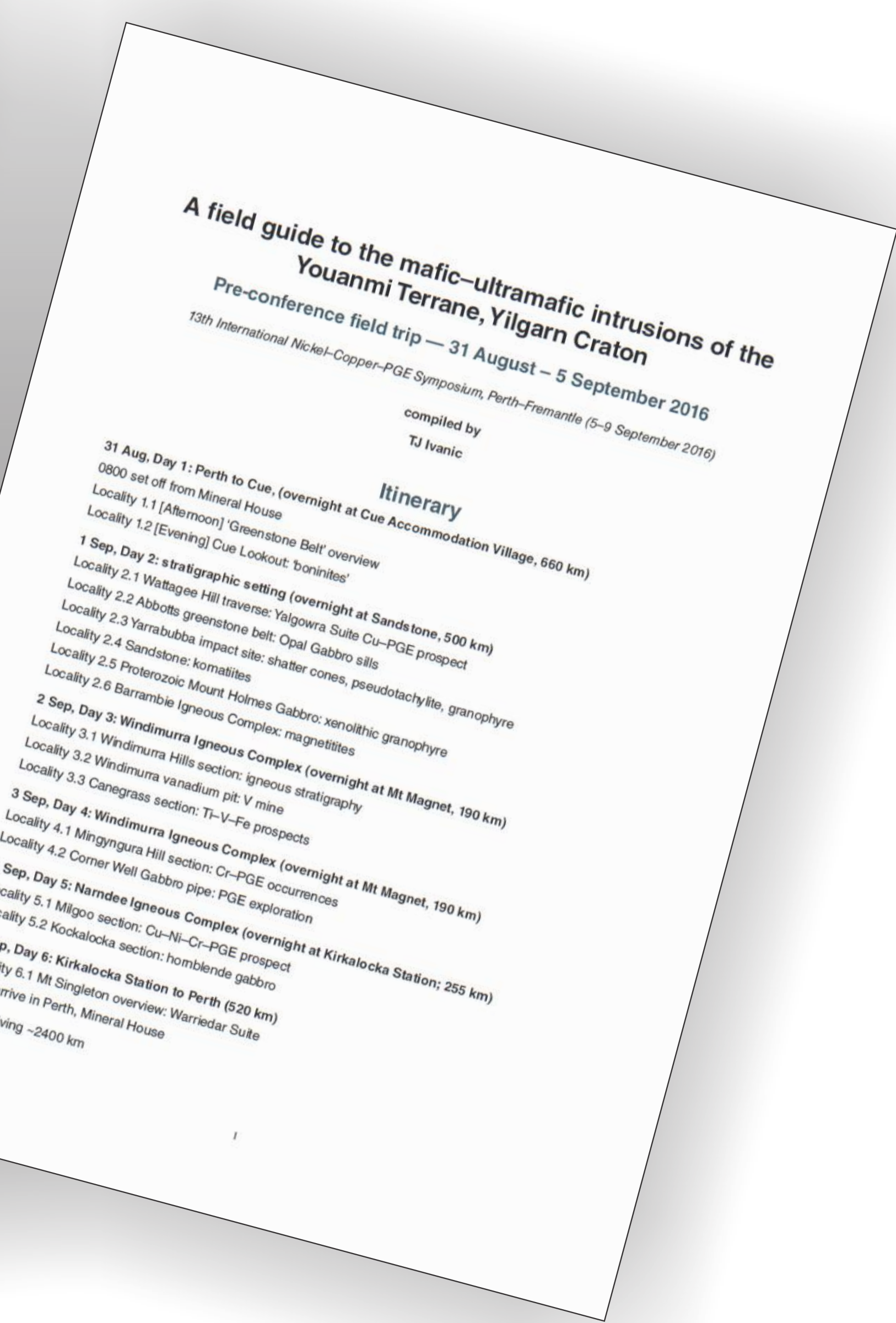
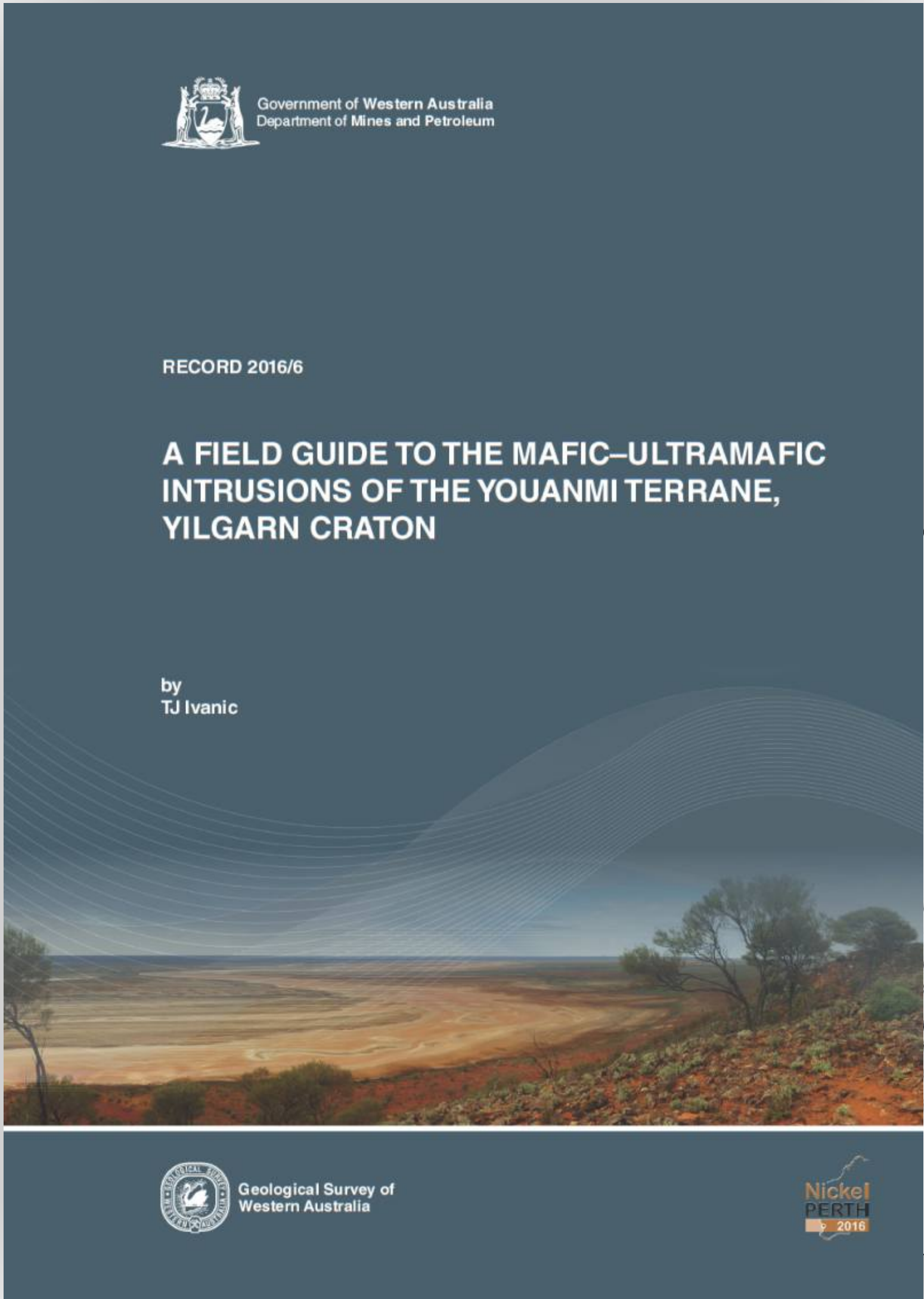


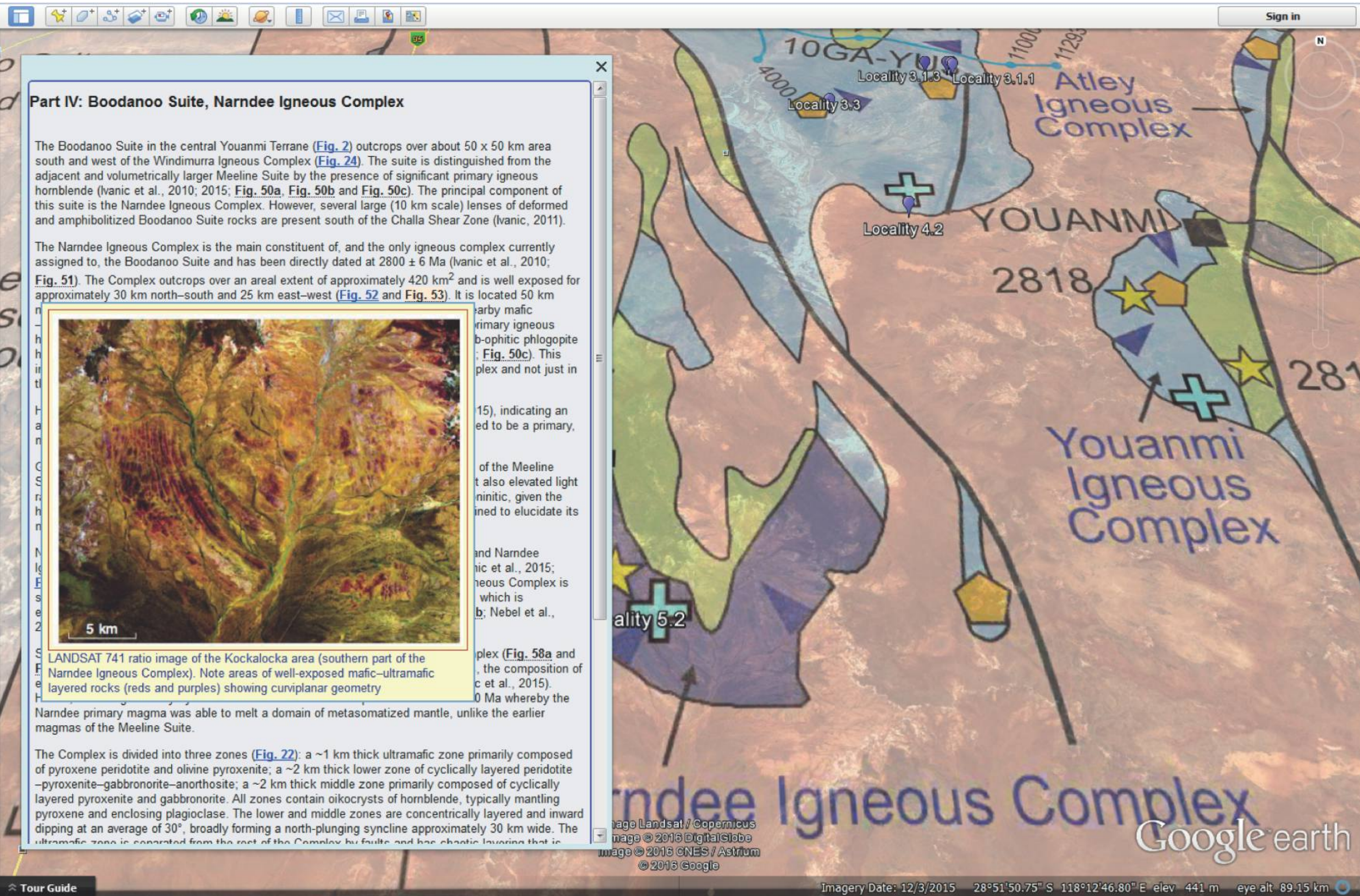
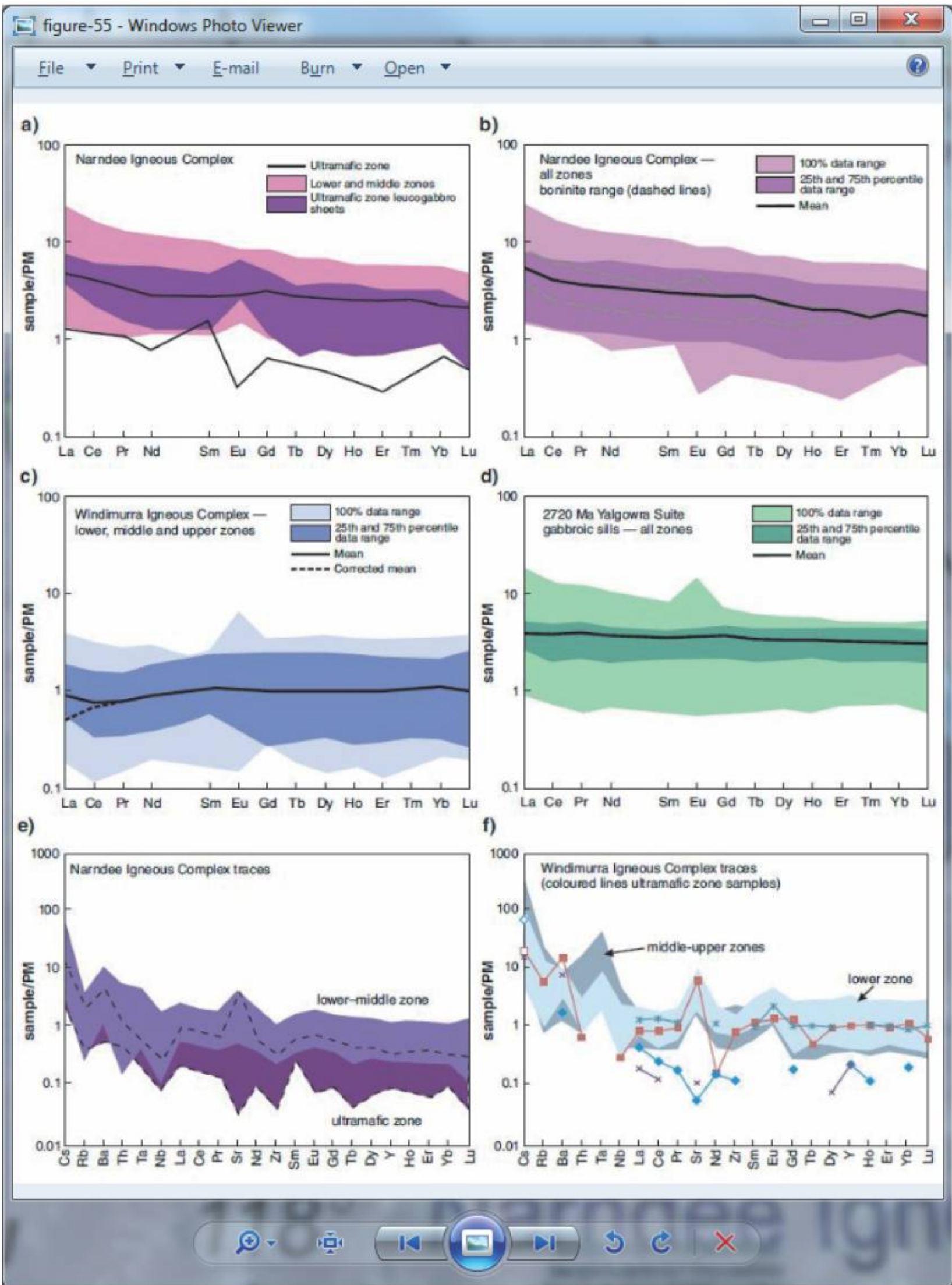
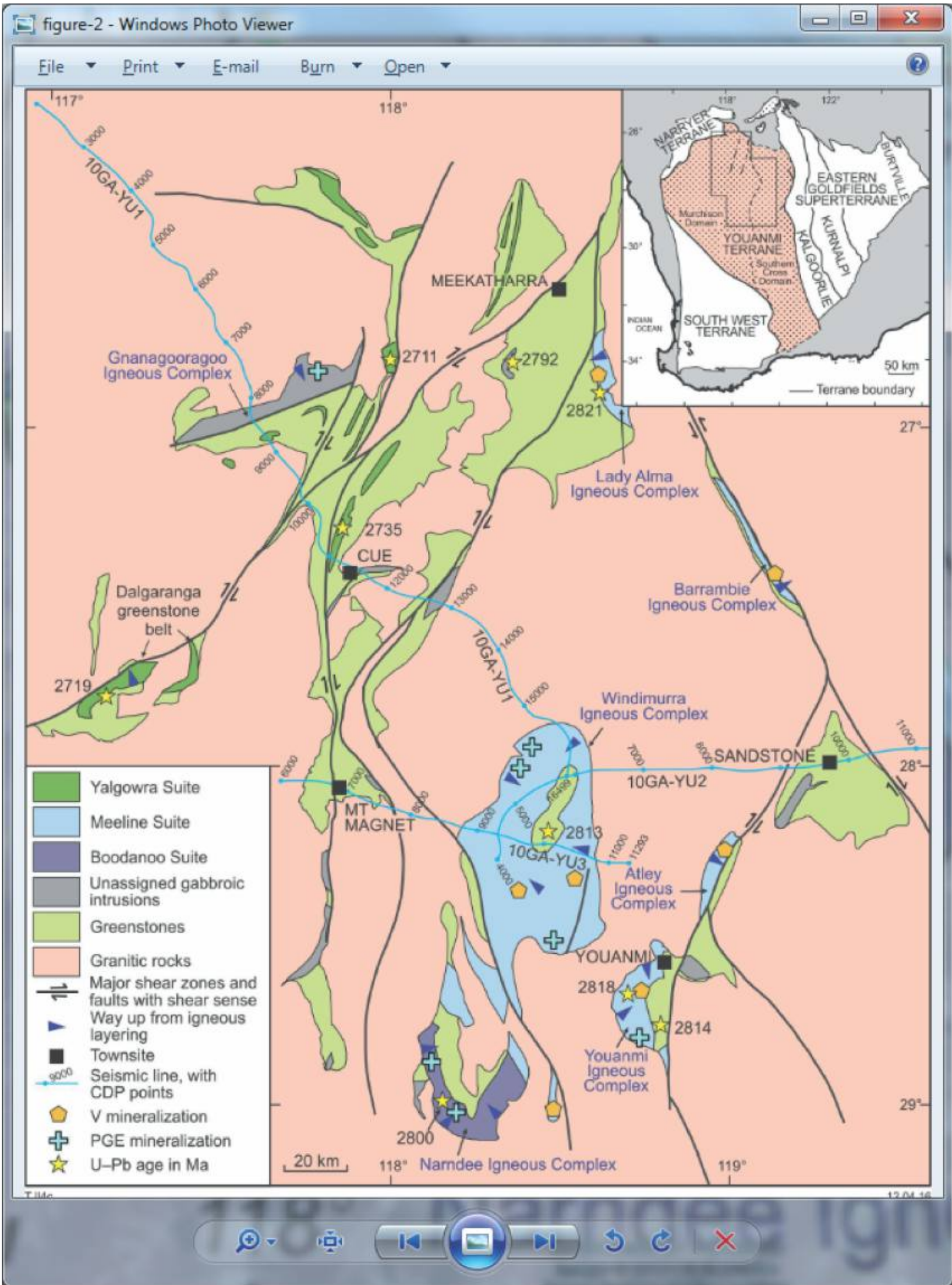
Virtual Tours

Virtual tour of the mafic–ultramafic intrusions of the Youanmi Terrane



- 14 field sites documented in detail, viewable from the comfort of your armchair
- 60 high-quality figures which can be opened in a separate browser window
- Photomicrograph images open in pop-up window in the main text box
- Detailed fieldmap overlays viewable from the places panel
- The tour can be viewed alongside spatial information already present in Google Earth (i.e. photographs)
- Other geological layers (e.g. geochemistry sites) can be imported from the GSWA database using Web Map Services (WMS)

The ‘Virtual tour of the mafic–ultramafic intrusions of the Youanmi Terrane’ is a Google Earth virtual field excursion for the experienced geologist and is based on the 2016 field guide (Record 2016/6). The geology is taken directly from the field guide, with minor amendments to enable it to be run in a Google Earth environment. Each field site can be viewed in turn, or separately, and is supplemented by high-quality figures, images and illustrations that can be opened in a separate browser without distracting from the site information.



Now available

www.dmp.wa.gov.au/ebookshop

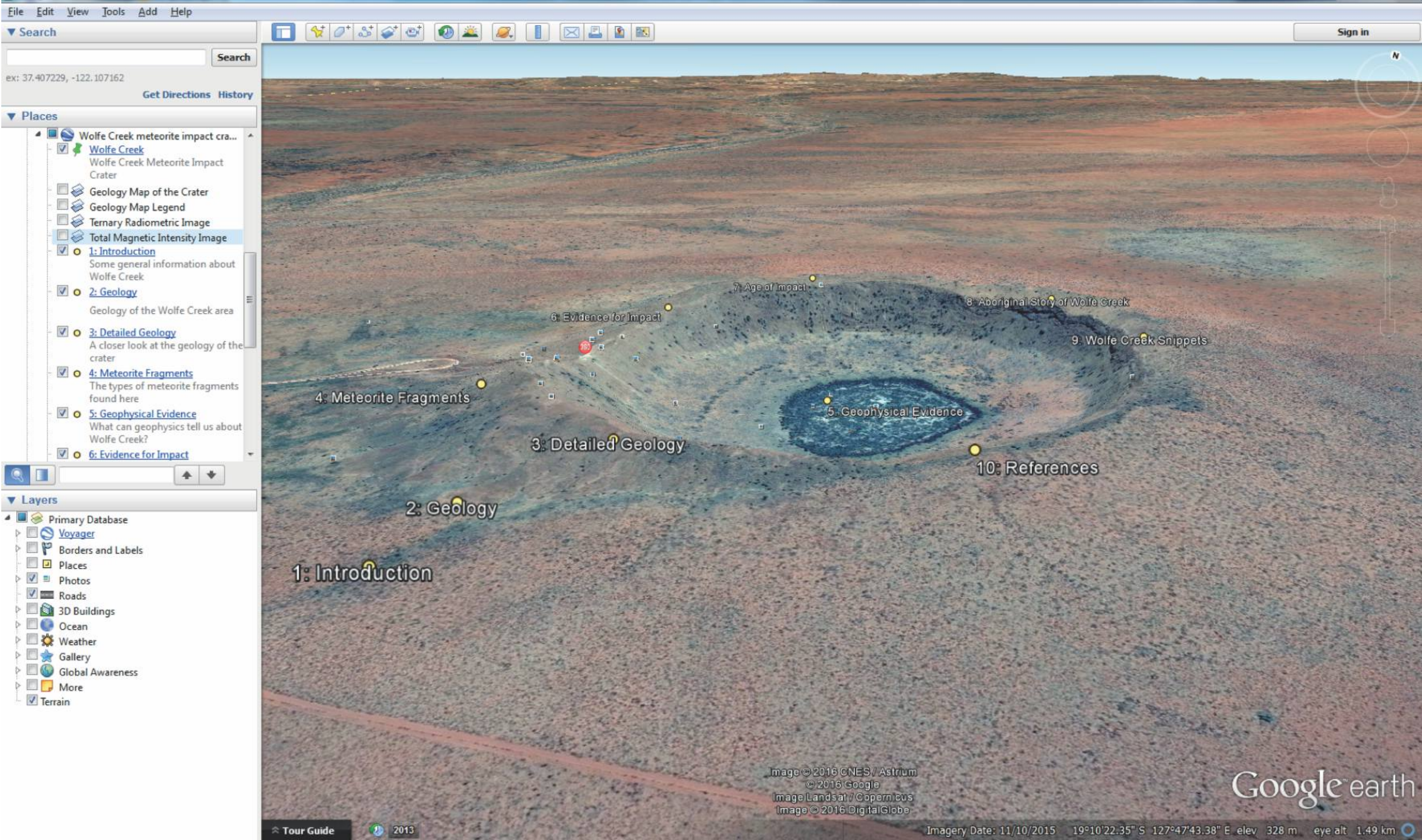
For more information contact:

Tim Ivanic Ph: 9222 3381 Email: tim.ivanic@dmp.wa.gov.au

Terry Farrell Ph: 9222 3009 Email: terry.farrell@dmp.wa.gov.au

Virtual tour of the meteorite impact structures of Western Australia

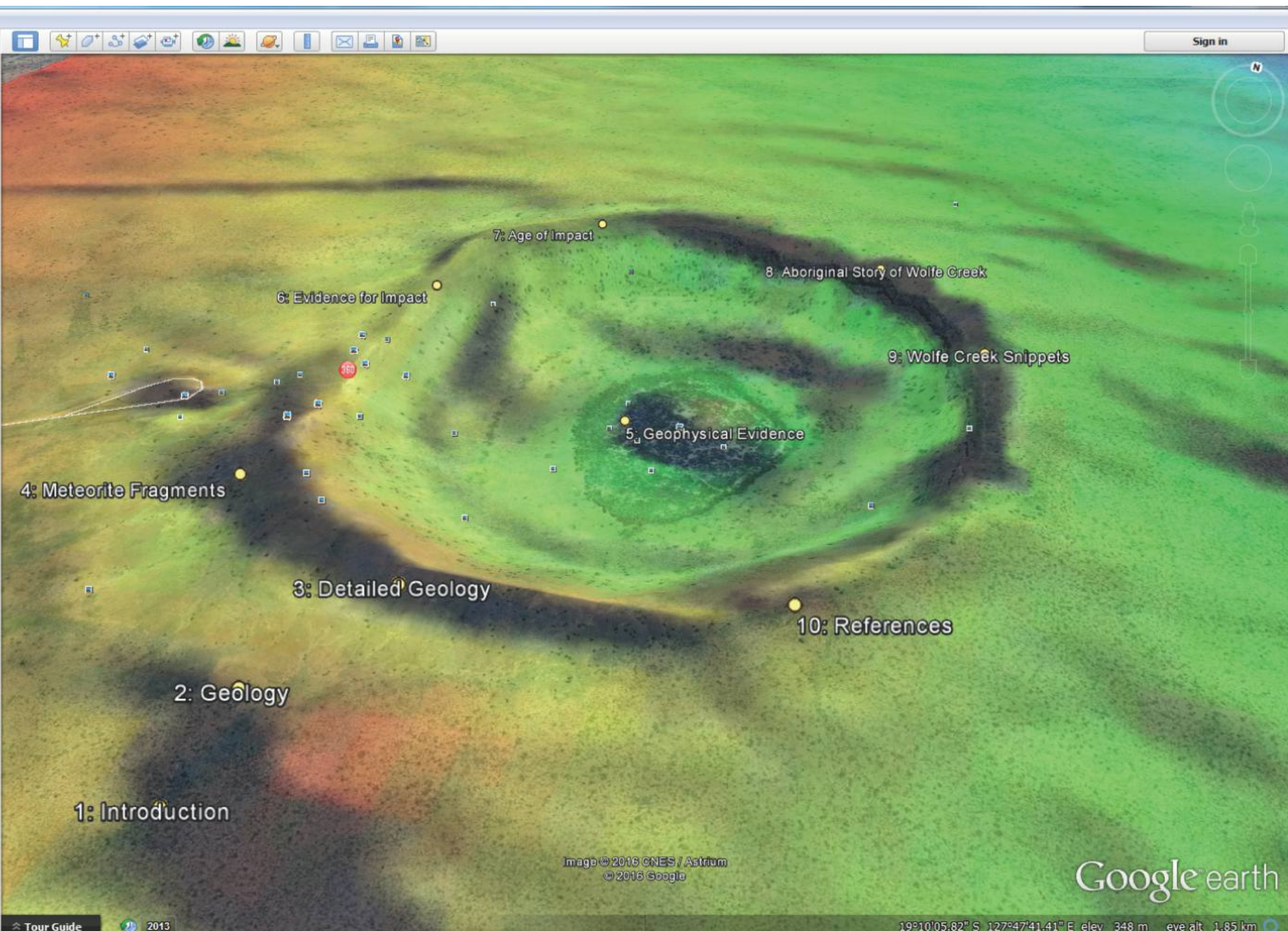
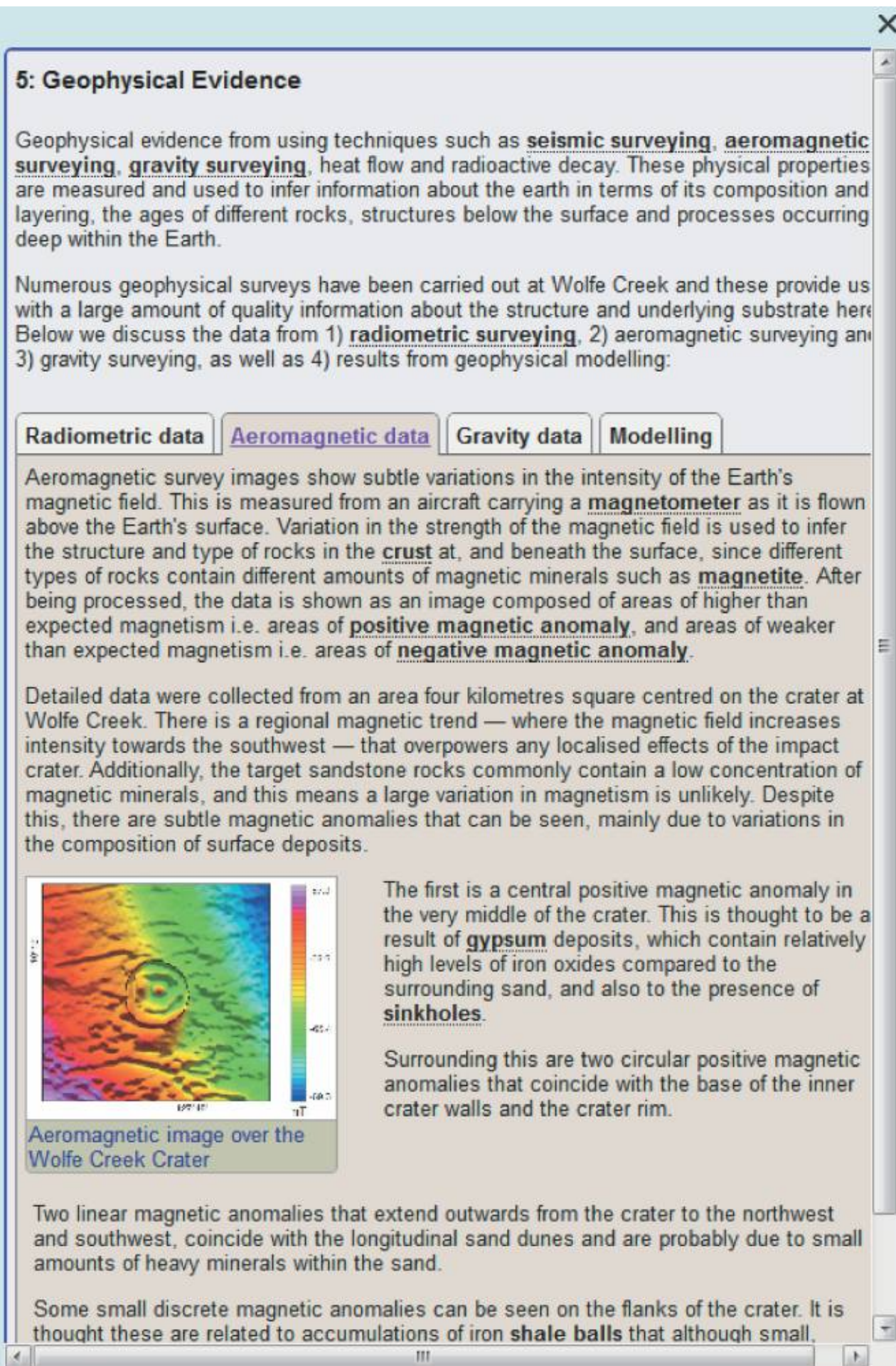
The virtual tour ‘Meteorite impact structures of Western Australia’ is aimed at amateur geologists or anyone with a passion for finding out more about the State’s impact structures. The ‘armchair’ tour provides information on all aspects of the geology, as well as historical or cultural information on the impact sites.



- Dalgaranga
- Piccaninny
- Shoemaker
- Veevers
- Wolfe Creek
- Yallalie
- Yarrabubba

The tour provides in-depth information on seven of the State’s most important impact sites. Additional information including geological maps and geophysical images are provided for overlay (controlled from the Places panel on the left-hand side).

The tour provides a detailed set of glossary terms to aid the novice geologist, as well as a set of references for further reading.



COMING SOON!

For more information contact:

Terry Farrell Ph: 9222 3009 Email: terry.farrell@dmp.wa.gov.au

Sarah Goss Ph: 9222 3207 Email: sarah.goss@dmp.wa.gov.au

Simon Johnson Ph: 9222 3127 Email: simonpaul.johnson@dmp.wa.gov.au



Government of Western Australia
Department of Mines and Petroleum

www.dmp.wa.gov.au

Geological Survey of
Western Australia

