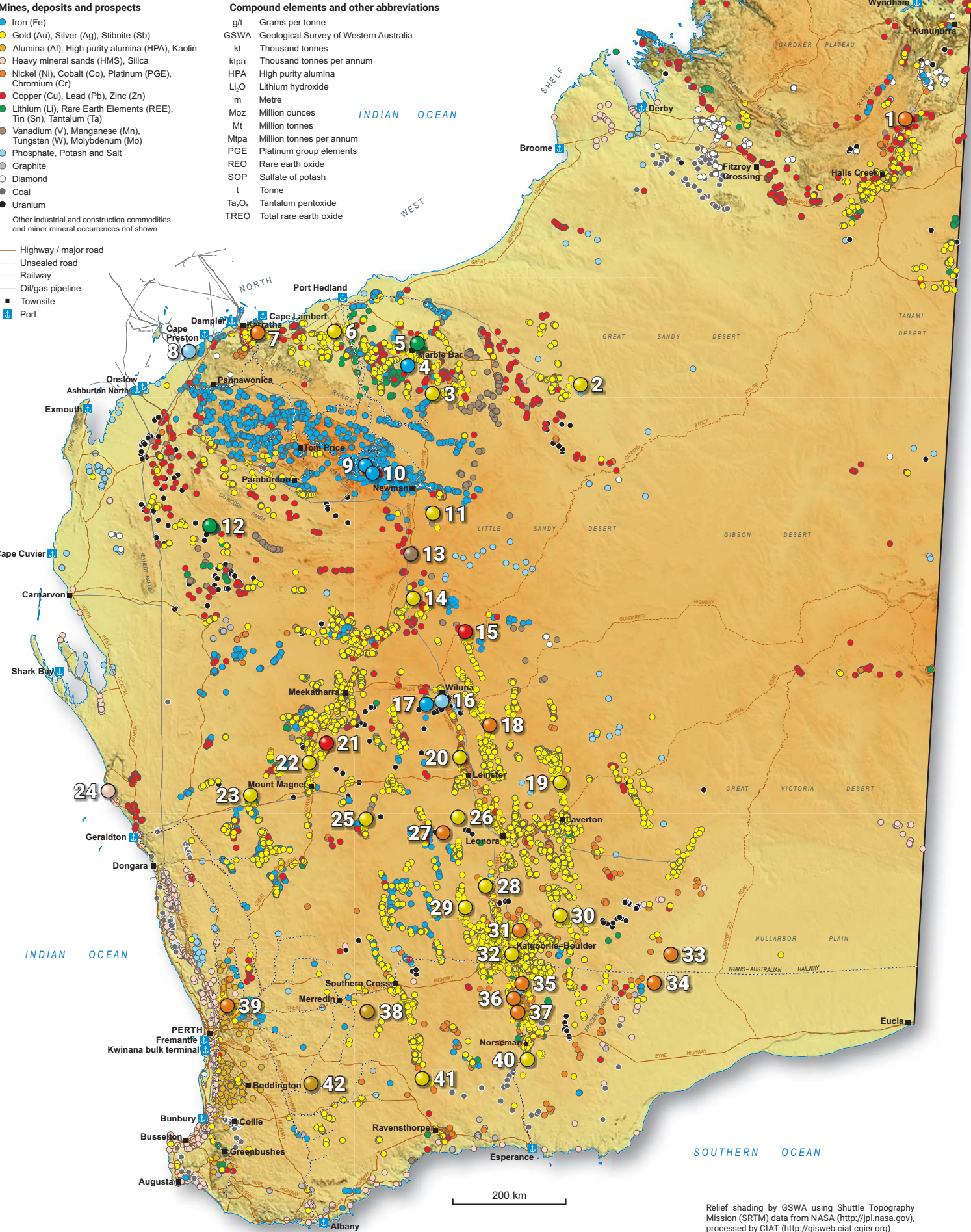


# WESTERN AUSTRALIA

## Selected exploration and mining highlights



<b>EIS</b>	<b>1 Savannah</b> Nickel Under development	Underground mining has commenced at <b>Savannah North</b> , with ore processing scheduled from October 2021 and first concentrate expected in November. <i>Panoramic Resources Ltd</i>	
<b>EIS</b>	<b>2 Havieron</b> Gold + Copper Under construction	Commencement of the underground decline access at <b>Havieron</b> has begun with a pre-feasibility study expected by late-2021. This will build upon the maiden Inferred Mineral Resource Estimate of 52 Mt at 2.0 g/t Au and 0.31% Cu for 3.4 Moz Au and 160 kt Cu previously announced for <b>Havieron</b> . <i>Newcrest Mining Ltd, Greatland Gold Plc</i>	
<b>EIS</b>	<b>3 Beatons Creek</b> Gold Operating	The first gold bar has been poured from the <b>Beatons Creek</b> project. This follows refurbishment of the Golden Eagle mill. <i>Novo Resources Corp</i>	
<b>EIS</b>	<b>4 Sanjiv Ridge</b> Iron ore Operating	First ore has been crushed following commencement of operations at <b>Runway North</b> and <b>Runway South</b> . The operation will produce 4–5 Mtpa of lump and fines, which will be hauled to the Utah Point stockyard in Port Hedland. The Mineral Resource Estimate is 64 Mt at 57.2% Fe with reserves of 29 Mt at 57% Fe. Mine construction is nearing completion with full production scheduled for Q3 2021. <i>Atlas Iron Ltd, Gondwana Resources Ltd</i>	
<b>EIS</b>	<b>5 Marble Bar</b> Lithium Exploration	New lithium–tantalum discovery in spodumene-hosted pegmatite dykes announced for the <b>Marble Bar</b> Lithium Project together with a maiden Inferred Resource Estimate of 10.5 Mt at 1.0% Li <sub>2</sub> O and 44 ppm Ta <sub>2</sub> O <sub>5</sub> . Additional drilling has been completed following an initial public offering and listing on the Australian Securities Exchange. <i>Global Lithium Resources Pty Ltd</i>	
<b>EIS</b>	<b>6 Mallina</b> Gold Exploration	A maiden Indicated and Inferred Mineral Resource Estimate has been announced for <b>Hemi</b> – 192 Mt at 1.1 g/t Au for 6.8 Moz Au. This has significantly increased the global project resource from 2.2 Moz to 9.0 Moz of contained gold from 230 Mt at 1.2 g/t Au. <i>De Grey Mining Ltd</i>	
<b>EIS</b>	<b>7 Andover</b> Nickel + Copper Exploration	Several zones of massive nickel–copper sulfides have been intersected at <b>Andover</b> , including the <b>VC-07 East</b> target with drilling results of 7.15 m at 2.28% Ni and 0.57% Cu from 135.4 m including 4.25 m at 3.59% Ni and 0.78% Cu from 137.1 m. <i>Azure Minerals Ltd</i>	
<b>EIS</b>	<b>8 Mardie</b> Salt + Potash DFS complete	An optimisation review of the definitive feasibility study indicates that a higher production rate of 5.35 Mtpa of high-purity salt and 140 ktpa of premium SOP fertilizer over a 60-year project life is viable. A final investment decision is planned for mid-2021 with construction to commence in the second half of 2021, first salt sales in 2024 and first SOP sales in 2025. <i>BCI Minerals Ltd</i>	
<b>EIS</b>	<b>9 South Flank</b> Iron ore Operating	<b>South Flank</b> has delivered first ore as production ramps up to its anticipated 80 Mtpa capacity. Included within the <b>Mining Area C</b> hub, it will form the world's largest operating iron ore hub. <i>BHP Group, Itochu Minerals &amp; Energy of Australia Pty Ltd, Mitsui &amp; Co Ltd and Pohang Iron and Steel Co. Ltd (POSCO)</i>	
<b>EIS</b>	<b>10 Wonmunna</b> Iron ore Operating	First ore has been achieved less than five months after breaking ground at <b>Wonmunna</b> . Ramp up is underway to reach the 5 Mtpa production in Q3 2021, with plans for expansion. Ore will be used in the Utah Point Hub iron ore blend and boost production from the hub towards 14 Mtpa by the end of 2021. <i>Mineral Resources Ltd</i>	
<b>EIS</b>	<b>11 Karlawinda</b> Gold Operating	First gold poured at <b>Karlawinda</b> , from the <b>Bibra</b> open pit. The mine is expected to produce 1.2 Moz Au over a 12-year mine life. <i>Capricorn Metals Ltd</i>	
<b>EIS</b>	<b>12 Yangibana</b> Rare earth elements Feasibility completed	The Mineral Resource Estimate for the <b>Yangibana</b> project has been updated to 27.42 Mt at 0.97% TREO for 266 kt of REO. <i>Hastings Technology Metals Ltd</i>	
<b>EIS</b>	<b>13 Butcherbird</b> Manganese Under development	The first manganese concentrate produced from the <b>Yanneri Ridge</b> deposit has been transported to Utah Point in Port Hedland for export. The concentrate was produced under commissioning and ramp up of the Stage 1 processing plant which will produce 365kt of high-quality manganese concentrate over a 40-year mine life. <i>Element 25 Ltd</i>	
<b>EIS</b>	<b>14 Marymia</b> Gold Exploration	High-grade gold intersections from the <b>Trident Corridor</b> include 9 m at 26.2 g/t Au from 137 m (including 2 m at 102.2 g/t Au) and 7.15 m at 17.1 g/t Au from 194 m. <i>Vango Mining Ltd</i>	
<b>EIS</b>	<b>15 Earaheedy</b> Zinc + Lead Exploration	Recent drilling results from the <b>Chinook</b> prospect include: 23 m at 4.1% Zn+Pb from 103 m including 17 m at 5.21% Zn+Pb, 6.2 g/t Ag from 103 m. <i>Rumble Resources Ltd, Zenith Minerals Ltd</i>	
<b>EIS</b>	<b>16 Lake Way</b> Potash Under development	The processing plant at <b>Lake Way</b> has been commissioned with full load processing and first production of SOP expected in Q3 2021. <i>Salt Lake Potash Ltd</i>	
<b>EIS</b>	<b>17 Wiluna West JWD</b> Iron ore Under development	Construction of the <b>Wiluna West JWD</b> open pit has recently commenced. Commissioning of the crush and screen plant is now underway and first direct shipping ore was recently delivered as the project ramps up to full production in 2021. <i>GWR Group, Fe Ltd</i>	
<b>EIS</b>	<b>18 Yandal</b> Nickel + Copper Exploration	Results at the <b>Dusty</b> prospect confirm 4.5 m of cumulative massive nickel sulfides was intersected with an average grade of 3.91% Ni, 0.34% Cu, 0.13% Co and 0.45 g/t Pt + Pd. Massive sulfides have also been intersected at the <b>Dusty 2</b> target with assay results still pending. <b>Dusty</b> was the first discovery of massive nickel sulfides within the typically gold-enriched Yandal greenstone belt. <i>Toro Energy Ltd</i>	
<b>EIS</b>	<b>19 Cox's Find</b> Gold Exploration	Bonanza grades were intersected at the <b>Cox's Find</b> main lode with results including 5.65 m at 80.0 g/t Au (as well as 1.1 m at 404 g/t Au). <i>Great Southern Mining Ltd</i>	
<b>EIS</b>	<b>20 Bellevue</b> Gold Under development	The total project Mineral Resource Estimate has increased to 3.0 Moz Au from 9.4 Mt at 9.0 g/t Au, following inclusion of the <b>Marceline</b> and <b>Deacon North</b> lodes. This will form the basis for a Stage 2 feasibility study to be released later this year which will consider increasing plant capacity from 750 ktpa to 1 Mtpa. <i>Bellevue Gold Ltd</i>	
<b>EIS</b>	<b>21 Cue Copper</b> Copper + Gold Exploration	Drilling results at <b>Eelya South</b> include 3 m at 3.78% Cu, 6.68 g/t Au and 81 g/t Ag. <i>Cyprium Metals Ltd, Musgrave Minerals Ltd</i>	
<b>EIS</b>	<b>22 Cue-Moyagee</b> Gold Exploration	High-grade drilling has been announced for the <b>Starlight Link-Lode</b> at the <b>Break of Day</b> deposit, with results of 48 m at 4.4 g/t Au from 30 m, including 6 m at 143.0 g/t Au from 42 m. This target was drilled under GSWA's Exploration Incentive Scheme (EIS). <i>Evolution Mining Ltd, Musgrave Minerals Ltd</i>	
<b>EIS</b>	<b>23 Yalgoo</b> Gold Exploration	Bonanza grades were intersected outside the historical resource envelope at the <b>Melville</b> deposit with results of 6 m at 244.9 g/t Au (including 1 m at 1439.55 g/t Au). <i>Firefly Resources Ltd, Aurum Minerals Pty Ltd, Macarthur Minerals Ltd</i>	
<b>EIS</b>	<b>24 Lucky Bay</b> Heavy minerals + Garnet Under development	A 1520% increase has been announced to the Mineral Resource Estimate for the <b>Menari</b> and <b>Menari North</b> deposits to 438.8 Mt at 4.3% heavy minerals and 86.2% garnet for 18.8 Mt of heavy minerals and 16.2 Mt of garnet. The project (formerly known as <b>Balline</b> ) has been approved for development with first production anticipated in early 2022. <i>Resource Development Group Ltd</i>	
<b>EIS</b>	<b>25 Youanmi</b> Gold Exploration	The total Mineral Resource Estimate has increased to 18.09 Mt at 2.85 g/t Au for 1.66 Moz Au for the <b>Near Surface</b> and <b>Deeps</b> areas. This includes a maiden Mineral Resource Estimate of 490 kt at 6.95 g/t Au estimated for the high-grade nuggety <b>Grace</b> deposit. <i>Rox Resources Ltd, Venus Metals Corporation Ltd</i>	
<b>EIS</b>	<b>26 Ida Valley</b> Gold Exploration	The discovery of a new zone of gold mineralization at the <b>Ida Valley</b> project, was announced in June. Drilling results include 8 m at 2.3 g/t Au from 36 m. <i>TechGen Metals Ltd</i>	
<b>EIS</b>	<b>27 Mt Alexander</b> Nickel + Copper Exploration	Drilling results from the <b>Investigators</b> prospect confirm a thick interval of high-grade nickel–copper sulfides: 11.07 m at 1.58% Ni, 0.71% Cu, 1.23 g/t total PGE from 333.5 m including 3.9 m at 3.98% Ni, 1.8% Cu, 3.1 g/t total PGE from 340.67 m and including 1.28 m at 6.54% Ni, 2.96% Cu, 3.88 g/t total PGE from 342.12 m. <i>St George Mining Ltd</i>	
<b>EIS</b>	<b>28 Menzies</b> Gold Exploration	Drilling results at the <b>Stirling</b> Lode include 2 m at 37.71 g/t Au and 1 m at 56.54 g/t Au. Drilling results from <b>Selkirk</b> include 1 m at 107.0 g/t Au. <i>Kingwest Resources Ltd</i>	
<b>EIS</b>	<b>29 Davyhurst</b> Gold Operating	The <b>Davyhurst</b> 1.2 Mtpa gold processing plant together with its associated site infrastructure was successfully recommenced with the first gold bar poured on 7 February 2021. <i>Ora Banda Mining Ltd</i>	
<b>EIS</b>	<b>30 Mulgabbie North</b> Gold Exploration	Discovery of a new zone of gold mineralization at the <b>Mulgabbie North</b> project was announced in June. Drilling results include 4 m at 5.02 g/t Au and 10 m at 2.8 g/t Au (including 1 m at 21.6 g/t Au) from 17 m. <i>OzAurum Resources Ltd</i>	
<b>EIS</b>	<b>31 Black Swan</b> Nickel Feasibility completed	More high-grade nickel has been intersected at <b>Golden Swan</b> on the Southern Terrace basal contact with 6.4 m at 9.60% Ni. An underground drive has been completed to support further development and drilling with first production from <b>Golden Swan</b> expected in 2022. <i>Poseidon Nickel Ltd</i>	
<b>EIS</b>	<b>32 KCGM Super Pit</b> Gold Operating	The first underground portal in 25 years has been cut into the <b>Superpit</b> at <b>Fimiston Underground</b> , with production planned in 2026. This updated global Mineral Resource Estimate has increased by almost 40% to 526.7 Mt at 1.6 g/t Au for 26 Moz of gold. <i>Northern Star Resources Ltd</i>	
<b>EIS</b>	<b>33 Rockford</b> Nickel Exploration	Drilling continues at the <b>Mawson</b> prospect, with recent results of 14.45 m at 2.63% Ni, 2.09% Cu, 0.14% Co from 162.05 m. <i>Legend Mining Ltd, Creasy Group Ltd</i>	
<b>EIS</b>	<b>34 Fraser Range</b> Nickel + Copper Exploration	Nickel-copper mineralization has been intersected at the <b>Lantern South</b> prospect, with 41 m at 0.19% Ni, 0.14% Cu from 55 m. <i>Galileo Mining Ltd, Creasy Group Ltd</i>	
<b>EIS</b>	<b>35 Kambalda</b> Nickel Exploration	A new nickel zone referred to as <b>Gamma 50C</b> located south of the Gamma Island Fault has been announced. This hole was drilled under GSWA's Exploration Incentive Scheme (EIS) to test for offset extensions to the <b>Beta Hunt</b> nickel belt. Significant nickel intersections include: 4.6 m at 11.6% Ni from 135.1 m including 2.2 m at 18.4% Ni, 0.3 m at 1.2% Ni from 193.6 m, and 1.8 m at 2.4% Ni from 161.95 m. <i>Karora Resources</i>	
<b>EIS</b>	<b>36 Mt Edwards</b> Nickel Exploration	The total Mineral Resource Estimate now stands at 10.22 Mt at 1.6% Ni for 162 560 t of contained nickel. This follows updated mineral resources announced for the <b>26 North</b> , <b>Widgie Townsite</b> and <b>McEwen</b> deposits. <i>Neometals Ltd</i>	
<b>EIS</b>	<b>37 Widgiemooltha</b> Nickel Under development	The <b>Cassini</b> mine was officially opened on 30 March 2021 by the Minister for Mines and Petroleum, the Hon. Bill Johnston MLA. First nickel concentrate is anticipated in Q1 2022 as production is forecast to ramp-up to ~16 ktpa of nickel concentrate. Ore is sourced from two underground mines within the <b>Cassini</b> and the Northern Operations; <b>Durkin North</b> and <b>Long</b> with ore to be processed at BHP's Kambalda Nickel Concentrator and also sold to BHP's <i>Mincor Resources Ltd</i>	
<b>EIS</b>	<b>38 Noombenberry</b> Kaolin Exploration	A maiden Inferred Mineral Resource Estimate for the <b>Cloud Nine</b> Halloysite–Kaolin deposit has been announced following the completion of a maiden drilling program in 2020. The 207 Mt resource comprises 123 Mt of bright white kaolin-bearing material and 84 Mt of kaolin–halloysite-bearing material. A pre-feasibility study is underway with more drilling planned. <i>Latin Resources Ltd</i>	
<b>EIS</b>	<b>39 Julimar</b> Nickel + Copper + PGE Exploration	Further high-grade drilling results from the <b>Gonneville</b> intrusion eastern footwall contact includes 14 m at 4.2 g/t Pd, 1.1 g/t Pt, 0.2 g/t Au, 0.5% Ni, 0.8% Cu and 0.03% Co from 85 m. Infill and step-out drilling continues for the <b>G1-G11</b> zones with a maiden Mineral Resource Estimate now anticipated in Q3 2021. <i>Chalice Gold Mines Ltd</i>	
<b>EIS</b>	<b>40 Central Norseman</b> Gold Exploration	Discovery of high-grade mineralization at <b>Scotia SIF</b> in the first drilling program into the Noganeyer Formation. Significant results from the initial twelve-hole drilling program include: 14 m at 12.84 g/t Au including 2 m at 68.15 g/t Au from 34 m. <i>Pantoro Ltd</i>	
<b>EIS</b>	<b>41 Kat Gap</b> Gold Exploration	A single shallow infill hole drilled for advanced metallurgical and research and development studies has returned the highest ever recorded gold intercept at <b>Kat Gap</b> of 10 m at 40.5 g/t Au from 26.5 m including 0.5 m at 592.0 g/t Au from 28.5 m. <i>Classic Minerals Ltd</i>	
<b>EIS</b>	<b>42 Wickepin</b> Kaolin Under development	Construction of Stage 1 of the <b>Wickepin</b> project has begun, including building a commercial scale processing plant onsite. Commissioning of the plant is expected to start in Q3 2021 with full production of 200 ktpa anticipated by late-2021. This follows successful pilot plant demonstrations at their facility in Kwinana. The total Mineral Resource Estimate for <b>Wickepin</b> stands at 644.5 Mt of high-grade kaolinized granite. <i>WA Kaolin Ltd</i>	

For more information, contact:  
minedex@dmirs.wa.gov.au