

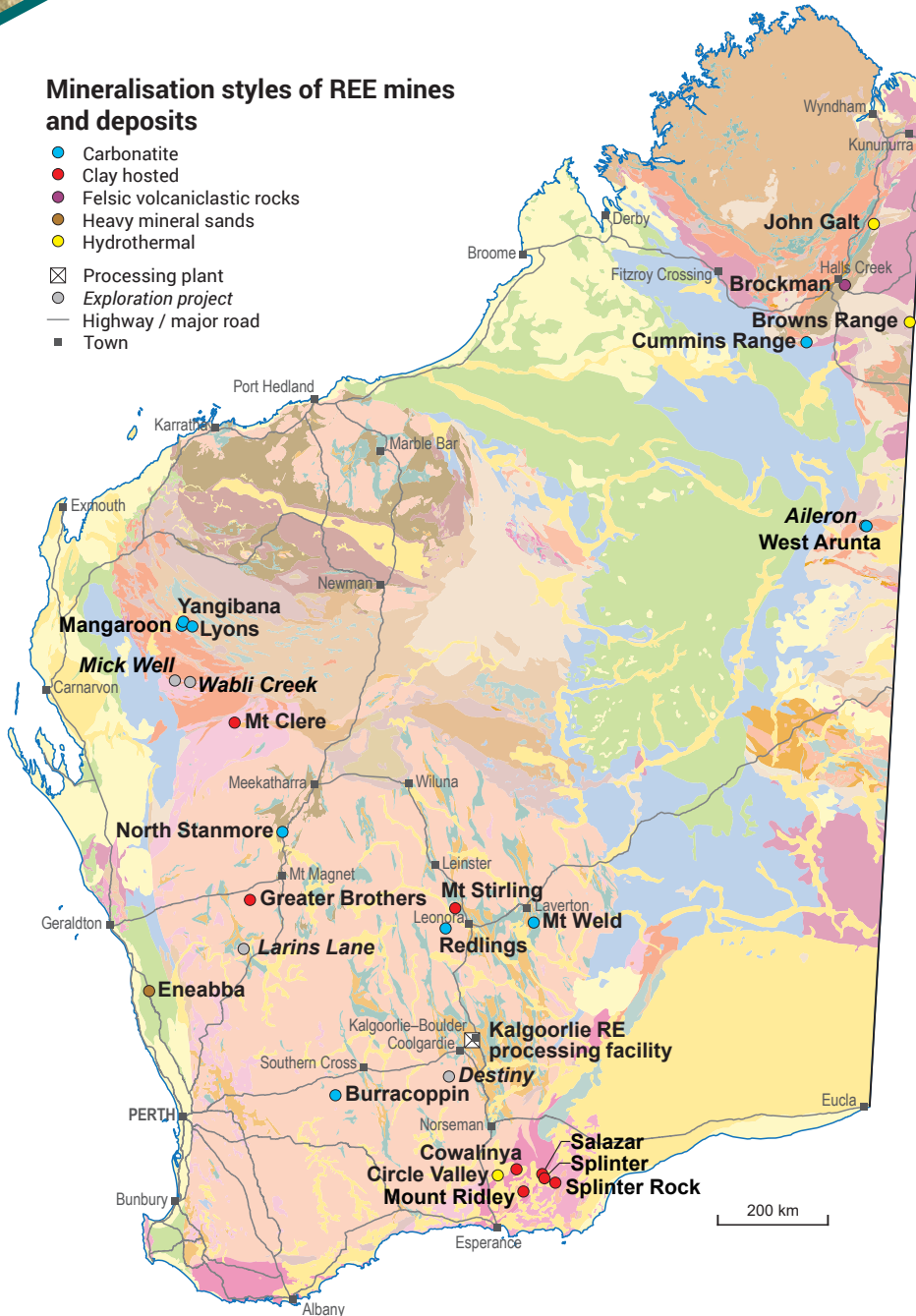
RARE EARTH ELEMENTS

INVESTMENT OPPORTUNITIES

WORLD-CLASS RESOURCE PROVINCE | SECURE INVESTMENT LOCATION
WORLD-LEADING GEOSCIENTIFIC DATA | GLOBAL MINING SERVICES INDUSTRY

Mineralisation styles of REE mines and deposits

- Carbonatite
- Clay hosted
- Felsic volcanoclastic rocks
- Heavy mineral sands
- Hydrothermal
- Processing plant
- Exploration project
- Highway / major road
- Town



27 652 t
Tonnes sold



834
Full-time
employees



\$4117 m[†]
Investment
projects



4th
Production
world ranking



2.5%
Royalty
rate



(2023–24 financial year)

[†] Includes projects planned, possible, committed or under construction as of September 2024

Western Australia is expanding its role in supplying rare earth oxides to the world

Mining and processing activities

- The Lynas Rare Earths processing facility in Kalgoorlie was officially opened by the Minister for Resources, Hon Madeleine King MP, in November 2024
- In December 2024, Iluka Resources received additional funding from the Federal Government to support the delivery of the Eneabba Rare Earths Refinery. Northern Minerals will supply xenotime concentrate from the Browns Range Project, containing dysprosium and terbium, to Iluka's refinery
- Northern Minerals are updating a Definitive Feasibility Study for Browns Range in line with first xenotime concentrate production in late 2027

Resources

- Updated Mineral Resource Estimates were released for Mt Weld (Lynas Rare Earths), Cummins Range (RareX), Splinter Rock (OD6 Metals), Salazar (West Cobar Metals) and North Stanmore (Victory Metals) Projects
- Maiden Resource Estimates were released for the Mount Ridley (Mount Ridley Mines) and Mt Stirling (Asra Minerals) Projects

Exploration

- Cummins Range remains the largest undeveloped rare earths deposit and the second largest rare earths deposit in Australia. The project is on target to become a significant potential source for neodymium–praseodymium magnets and a potential supplier to the lithium iron phosphate (LFP) battery market
- Several discoveries include Jupiter Satellite at the Greater Brothers Project (Critica Minerals), and Mick Well Project (Kingfisher Mining). Drilling at Mick Well was co-funded by the Western Australian Government's Exploration Incentive Scheme drilling program
- High-grade results have been noted at the Greater Brothers, Aileron (Encounter Resources), Destiny (St George Mining), Redlings (Marquee Resources), Larins Lane (Terrain Minerals), Wabli Creek (Reach Resources), Salazar (West Cobar Metals), Yangibana (Hastings Technology Metals) and North Stanmore (Victory Metals) Projects



Department of Energy, Mines,
Industry Regulation and Safety

demirs.wa.gov.au

Geological Survey of
Western Australia



Mineral Resource Estimates reported in accordance with JORC (2012) unless otherwise stated

