

COMPANY PROJECTS WITH SURFACE GEOCHEMISTRY DATA IN OPEN-FILE REPORTS (at March 1998)

AREAS OF EXPLORATION REPORTED BETWEEN 1968 AND 1985

SYMBOLS

- Highway
- Formed road
- Track
- Watercourse
- Lake
- Homestead
- Locality
- Mining centre
- Mine
- Prospect
- Mineral occurrence
- Arsenic
- Asbestos, chrysotile
- Asbestos, crocidolite
- Copper
- Gemstones
- Gold
- Iron
- Lead
- Marble
- Silver
- Tungsten

Project period reported within
(Various colour shades used for ease of project identification)

- 1968 - 1970
- 1971 - 1975
- 1976 - 1980
- 1981 - 1985
- 1986 - 1990
- 1991 - 1995

Number within project area is a database ID number (see Appendix 2)

see PLATE 4

SIMPLIFIED GEOLOGICAL INTERPRETATION

PROTEROZOIC

- Dolerite
- Bangemall Group
- Edmund Subgroup
- Dolerites, mudstones, siltstones, chert, sandstone (locally dolomitized), and subordinate conglomerate
- Mount Minnie Group
- Quartz sandstones, conglomerates, siltstones, and mudstone
- Gaasvoort Complex
- Gneiss, monzonite, and granite
- Schist, gneiss, amphibolite, marble, siltstone, quartzite, and metagabbro
- Wyloo Group
- Sandstone, siltstone, mudstone, conglomerate, dolomite, and mafic and felsic volcanic rocks, metamorphosed
- Turee Creek and Hammersley Groups
- Mudstone, banded iron-formation, chert, siltstone, dolomite, dolomitic, and rhyolite, metamorphosed
- Banded iron-formation, chert, potholes, dolomitic, and tuff, metamorphosed
- Fortescue Group
- Basalt, mafic volcanoclastic rock, argillite, sandstone, chert, conglomerate, and komatiite, metamorphosed

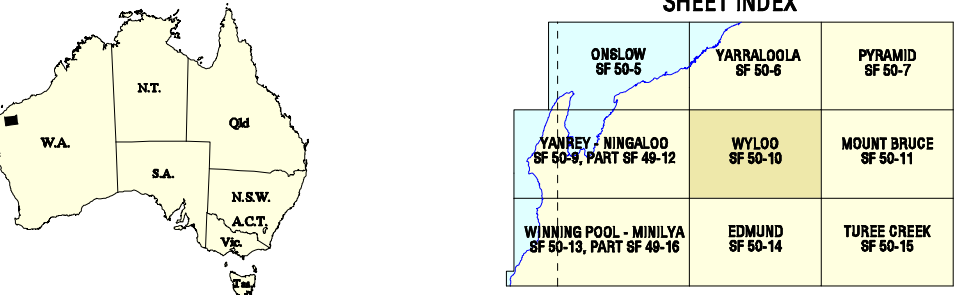
ARCHAEOGENIC

- Archean granites, includes Metavandry Granite
- Archean gneiss, includes mafic volcanic rocks of the Pilbara Supergroup

Geological boundary, Fault, Anticline, Syncline

INDEX TO 1:100 000 MAP SHEETS
WITHIN WYLOO 1:250 000

| | | |
|--------------------|----------------------|------------------|
| CANE RIVER 2065 | MOUNT STUART 2185 | FARQUHAR 2280 |
| BODALOO 2062 | WYLOO 2182 | HARDEY 2282 |



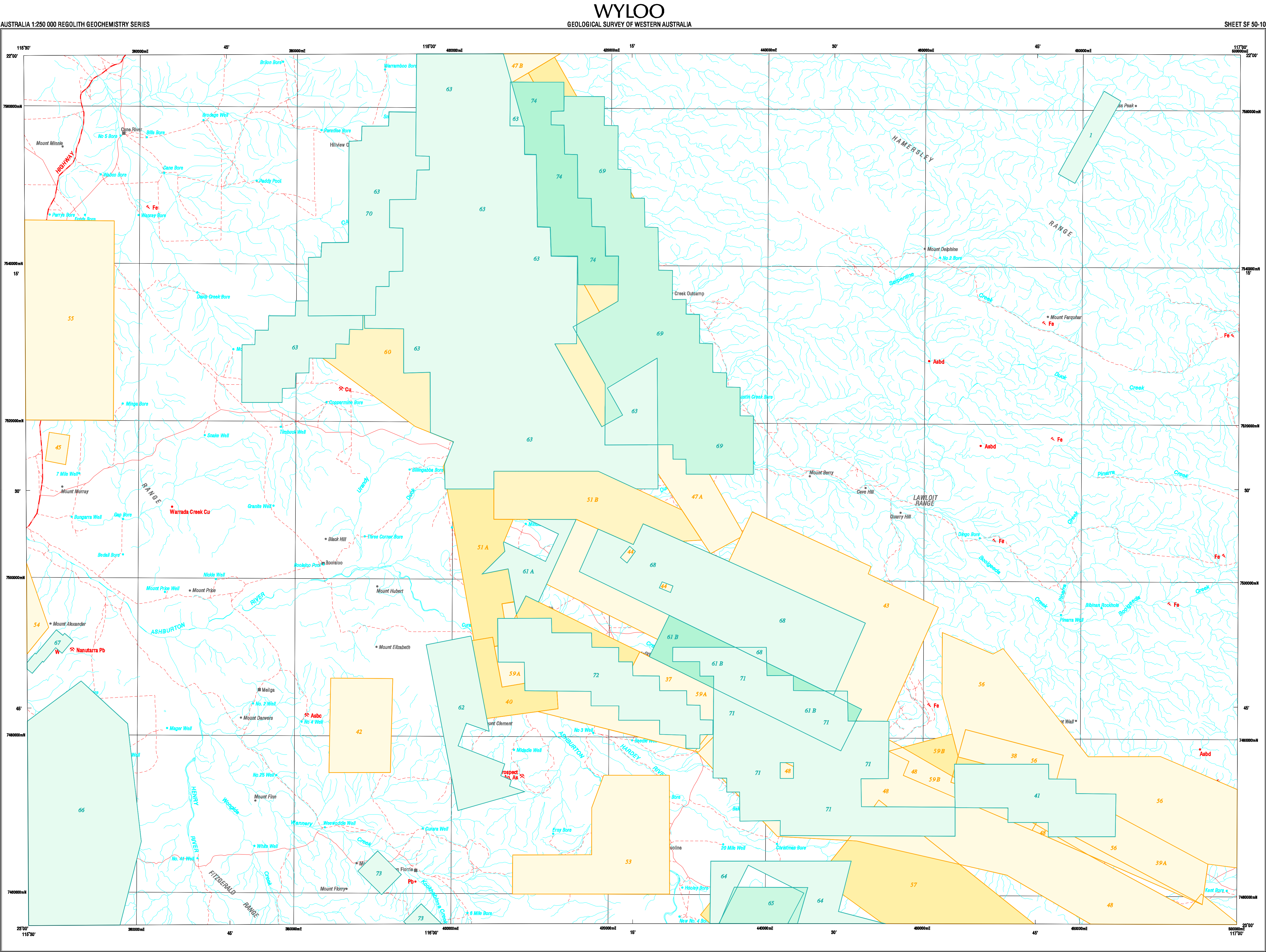
COMPANY PROJECTS WITH SURFACE GEOCHEMISTRY IN OPEN-FILE REPORTS (at March 1998)

AREAS OF EXPLORATION REPORTED BETWEEN 1968 AND 1985

REGOLITH GEOCHEMISTRY SERIES

WYLOO

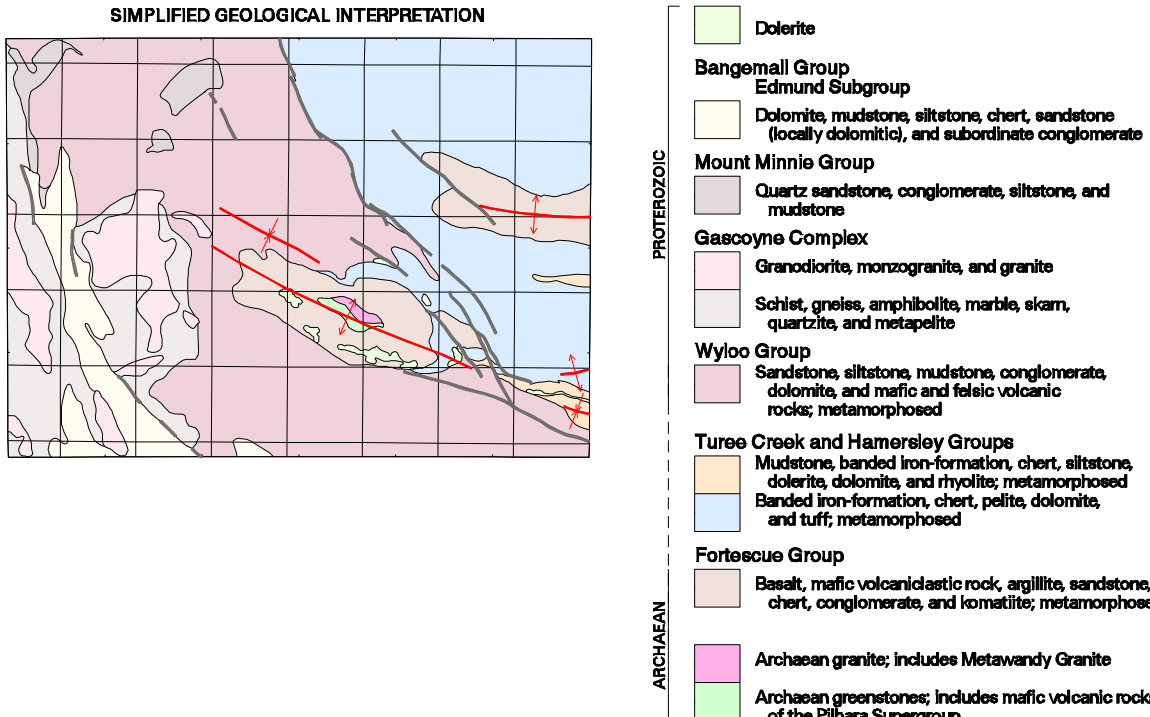
SHEET SF 50-10
FIRST EDITION 1999
© Western Australia 1999



COMPANY PROJECTS WITH SURFACE GEOCHEMISTRY DATA IN OPEN-FILE REPORTS (at March 1998)

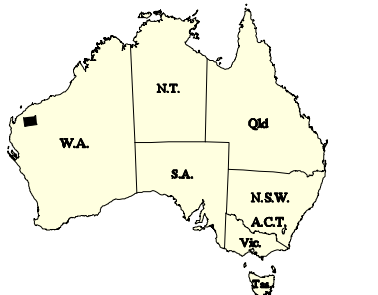
AREAS OF EXPLORATION REPORTED BETWEEN 1986 AND 1995

- SYMBOLS**
- Highway
 - Formed road
 - Track
 - Watercourse
 - Lake
 - Wylloo
 - Homestead
 - Locality
 - Mining centre
 - Mine
 - Prospect
 - Mineral occurrence
 - Arenic
 - Asbestos, chrysotile
 - Asbestos, crocidolite
 - Copper
 - Gemstones
 - Gold
 - Iron
 - Lead
 - Marble
 - Silver
 - Tungsten
- Project period reported within**
(Various colour shades used for ease of project identification)
- 1968 - 1970
 - 1971 - 1975
 - 1976 - 1980
 - 1981 - 1985
 - 1986 - 1990
 - 1991 - 1995
- Number within project area is a database ID number (see Appendix 2)



INDEX TO 1:100 000 MAP SHEETS WITHIN WYLOO 1:250 000

| | | |
|-----------------|----------------------|---------------|
| CANE RIVER 2063 | MOUNT ELIZABETH 2163 | FARQUHAR 2263 |
| BOULALOO 2062 | WYLOO 2162 | HARDEY 2262 |



SHEET INDEX

| | | |
|--|---------------------|----------------------|
| ONELOW SF 50-6 | YARBALLOOLA SF 50-8 | PYRAMID SF 50-7 |
| YANNEY / MINGALOO SF 50-9, PART OF 46-12 | WYLOO SF 50-10 | MOUNT BRUCE SF 50-11 |
| WILKINS POOL - MINILYA SF 50-14, PART OF 46-16 | EDMUND SF 50-13 | TURON CREEK SF 50-15 |

COMPANY PROJECTS WITH SURFACE GEOCHEMISTRY IN OPEN-FILE REPORTS (at March 1998)

AREAS OF EXPLORATION REPORTED BETWEEN 1986 AND 1995

REGOLITH GEOCHEMISTRY SERIES

WYLOO

SHEET SF 50-10
FIRST EDITION 1999
© Western Australia 1999