

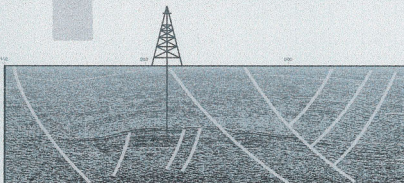


GOVERNMENT OF WESTERN AUSTRALIA  
DEPARTMENT OF MINERALS AND ENERGY



## SCHEDULE OF PETROLEUM EXPLORATION WELLS

### CARNARVON BASIN Merlinleigh and Byro Sub-basins, and Gascoyne Platform



Compiled by J. H. Haworth and L. M. Arden

GEOLOGICAL SURVEY OF WESTERN AUSTRALIA  
AND PETROLEUM OPERATIONS DIVISION



## Schedule of Petroleum Exploration Wells Carnarvon Basin, Merlinleigh and Byro Sub-Basins and Gascoyne Platform

There are 21 files, containing:

BIOSTRAT.XLS:  
CASING.XLS:  
CORES.XLS:  
DST.XLS:  
FORMATN.XLS:

Biostratigraphical data taken from Well Completion reports for the wells giving zones and depth ranges.

Casing sizes and depths

Listings of conventional cores cut in the well giving depths, recoveries and lithology.

A summary of DST and Production test results for the well (if run) giving flow rates and a brief description of the test.

Formation Tops summary for the well including all interpretations made and submitted to the Department. The data are presented giving Formation names, Qualifiers to those Formations, depths, TWT, thicknesses, lithologies and remarks.

Hole size summary for the well giving depth intervals and hole size.

HOLE.XLS:  
LOCATION.XLS:

A brief summary of the well giving coordinates, elevations, basin, sub-basin, depths, status, show ratings and dates

LOGBHT.XLS:

Listings of bottom hole temperature and mud resistivities obtained from wireline logs run on the hole (where available).

MUD.XLS:

Summary of mud types used during drilling

PLUGS.XLS:

Listing of all cement plugs pumped down the hole upon completion giving depths and thicknesses.

POROSITY.XLS:

Porosity, permeability, grain size and density data for analyses done on samples from the hole (excluding data provided to the Department from AGSO's PORPERM database.

Listings of all "open-file" reports associated with the well giving title and author details.

REPORTS.XLS:

Data on recoveries and comments on RFT samples

RFTSAMPL.XLS:

Geochemical data using the Rock-Eval technique supplying TOC, Tmax, S1, S2, S3, PI, HI OI, S2/S3 etc.

ROCKEVAL.XLS:

Providing details on sidetracking and re-spudding the well (where done) giving the section type and depth interval.

SECTION.XLS:

Summary of fluorescence and shows (by depth).

SHOWS.XLS:

Operational summary of the well by "drilled section" giving Operator, contractor, dates, depths, core and SWC summaries etc.

SUMMARY.XLS:

Listings by depth of sidewall cores shot in the hole with recoveries, lithology and fluorescence ratings.

SWC.XLS:

Velocity data (where available) giving a full listing of TWT and OWT by depth and details on the gun location and reference data.

VELOCITY.XLS:

Vitrinite reflectance results presented in the Well Completion report.

VITREFL.XLS:

Listing of all petrophysical logs run including Measurement While Drilling (MWD) with depth ranges and dates.

WIRELINE.XLS:

## Schedule of Petroleum Exploration Wells Carnarvon Basin, Merlinleigh and Byro Sub-Basins and Gascoyne Platform

Product available from First Floor counter, Mineral House, 100 Plain St, East Perth, WA 6004, AUSTRALIA. Or ordered through: [www.dmp.wa.gov.au/ebookshop](http://www.dmp.wa.gov.au/ebookshop)

Enquiries to Email: [gsd.dda@dmp.wa.gov.au](mailto:gsd.dda@dmp.wa.gov.au); Phone: +61 8 9222 3459; Fax: +61 8 9222 3444.

Cost: \$22 [inc. GST]

