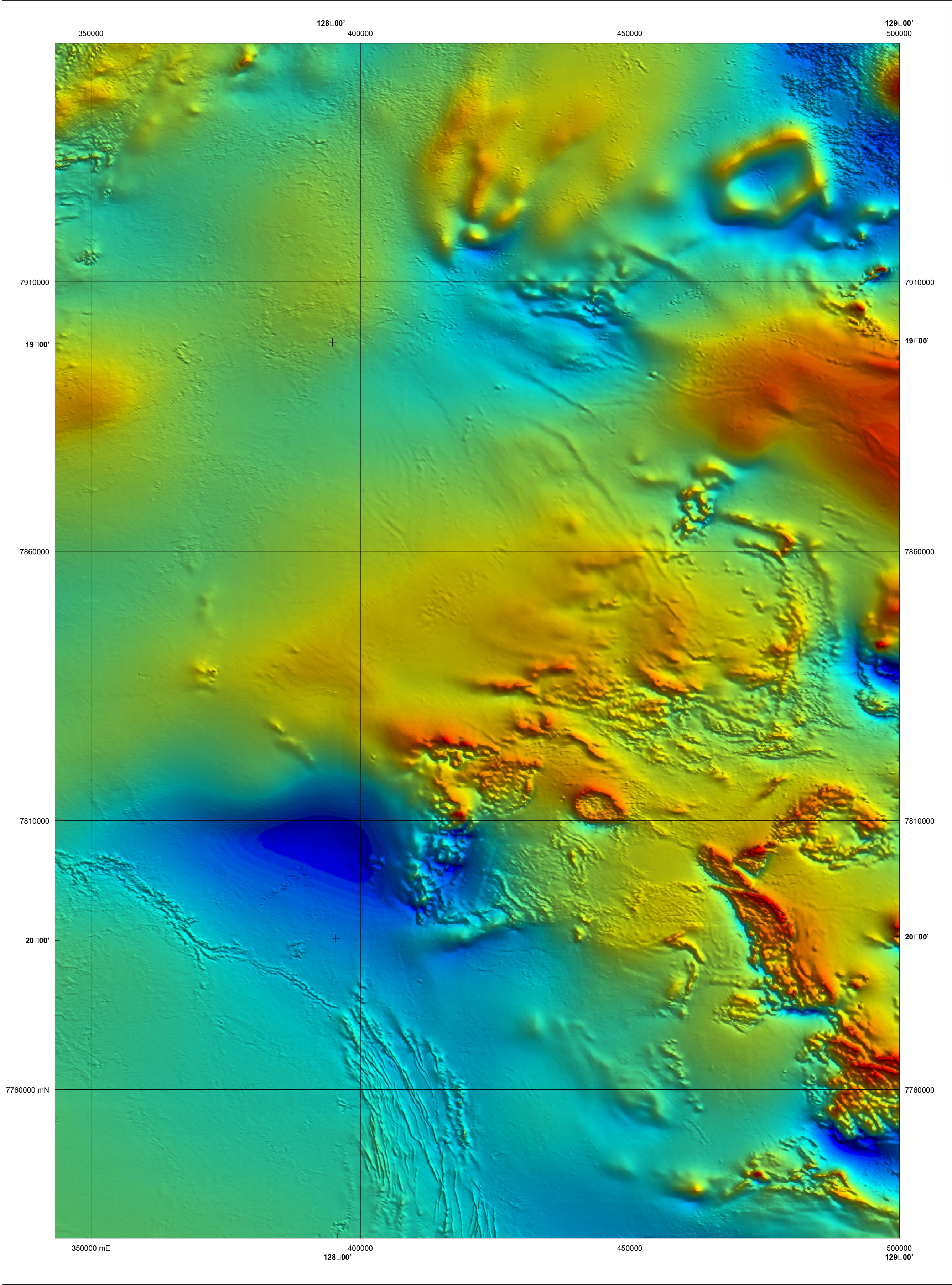


WEST TANAMI

1:500 000 TOTAL MAGNETIC INTENSITY IMAGE

GEOLOGICAL SURVEY OF WESTERN AUSTRALIA

SHEET SE 52- 14 AND PART SHEETS SE 52- 10 AND SF 52- 2



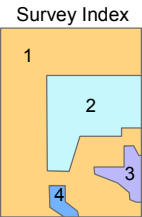
Data acquired in 2002 were merged with private company data flown between 1989 and 1995, which now form part of the National Airborne geophysical Database.

Published by the Geological Survey of Western Australia. Copies are available from the Information Centre, Department of Industry and Resources, 100 Plain Street, East Perth WA 6004. Telephone (08) 9222 3459, Fax (08) 9222 3444, [www.doir.wa.gov.au](http://www.doir.wa.gov.au)

Secondary data processing R. Franklin  
Image processing J. H. Watt  
Cartography N. Eaton  
Geophysics Project Manager S. H. D. Howard

These data are also available in digital form from the Sales Centre, Geoscience Australia  
GPO Box 378, Canberra, ACT 2601  
Telephone (02) 6249 9519, Fax (02) 6249 9982, [www.ga.gov.au](http://www.ga.gov.au)

The recommended reference for this map is:  
GEOLOGICAL SURVEY OF WESTERN AUSTRALIA, 2003, West Tanami, W.A. Sheet SE 52- 14 and part Sheets SE 52- 10 and SF 52- 2: West Australian Geological Survey, 1:500 000 Total Magnetic Intensity Image.

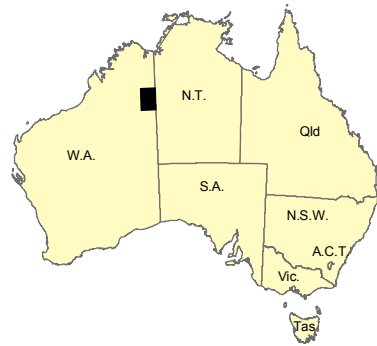


This image is compiled from four surveys listed in the table below, and shown on the survey index. The grid cell size is 80 m. Note that areas 2 and 3 were initially gridded to a 400 m cell size, and area 4 to a 50 m cell size, and then resampled to 80 m cell size to complete the grid merge process.

Survey ID	Survey Name	Line Spacing	Flight Line Direction	Ground Clearance	Contractor	Date	Client
1	West Tanami	400 m	0° - 180°	60 m	UTS	2002	GSWA/GA
2	Birindudu	300 m	0° - 180°	70 m	Kevron	1991	CRAE
3	Billiuna	250 m	0° - 180°	80 m	Geotrex	1989	CRAE
4	Balgo	200 m	90° - 270°	60 m	Aerodata	1995	Zapopan

SHEET INDEX

MOUNT RAMSAY SE 52- 9	GORDON DOWNS SE 52- 10
MOUNT BANNERMAN SE 52- 13	BILLIUNA SE 52- 14
CORNISH SF 52- 1	LUCAS SF 52- 2

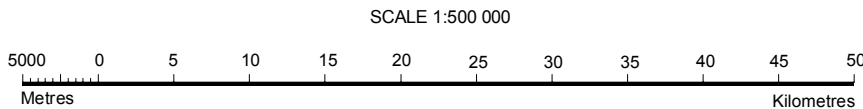


Department of Industry and Resources

Geological Survey of Western Australia



NGA  
PRODUCT OF THE NATIONAL  
GEOSCIENCE MAPPING AGREEMENT



UNIVERSAL TRANSVERSE MERCATOR PROJECTION  
HORIZONTAL DATUM: GEODETIC DATUM OF AUSTRALIA  
Grid lines indicate 25 000 metre interval of the Map Grid Australia Zone 52



The Map Grid Australia (MGA) is based on the Geocentric Datum of Australia 1994 (GDA94).  
GDA94 positions are compatible within one metre of the datum WGS84 positions.

GEOLOGICAL SURVEY OF WESTERN AUSTRALIA

TOTAL MAGNETIC INTENSITY

WEST TANAMI

SHEET SE 52- 14, and PART SHEETS SE 52- 10 and SF 52- 2

First Edition 2003

© Western Australia

WARNING: Inks are water soluble and will fade with prolonged exposure to light