


*Marble Bar
through the East Pilbara*

The screenshot shows the DMP Bookshop website. At the top, there are navigation links: 'Home', 'About', 'Contact', 'FAQ', 'Privacy', 'Terms', 'Sitemap', and 'Search'. Below this, there are several categories of books: 'New Arrivals', 'Best Sellers', 'Travel Guides', 'Reference', 'Maps', 'Audio', 'Video', 'DVD', 'CD', 'E-books', 'Gifts', 'Children's', 'Educational', 'Reference', 'Maps', 'Audio', 'Video', 'DVD', 'CD', 'E-books', 'Gifts', 'Children's', 'Educational'. A large red arrow points to the 'Marble Bar Road' section, which is highlighted in red. Below the arrow, there is a photograph of a road winding through a landscape with mountains in the background. The text below the photo reads: 'Vista at the Marble Bar Road runoff. Ancient (Archean) granite lies underneath Cretaceous sandstone.'



Government of Western Australia
Department of Mines and Petroleum

[Home](#)
[Minerals & Mining](#)
[Petroleum](#)
[Dangerous Goods](#)
[Geological Survey](#)
[Environment](#)
[Safety](#)
[Investor Information](#)
[Community & Education](#)
[About Us & Careers](#)

Geology & Geophysics

- GSWA publications & maps
- Geology of Western Australia
- State maps & statewide datasets
- Geotourism
- Geoheritage
- Minerals geoscience
- Regional geophysical survey data

Exploration

- Core library services & drillcore
- HydLogger spectral scanner
- Land use planning
- Mineralisation reports & resource

News & events

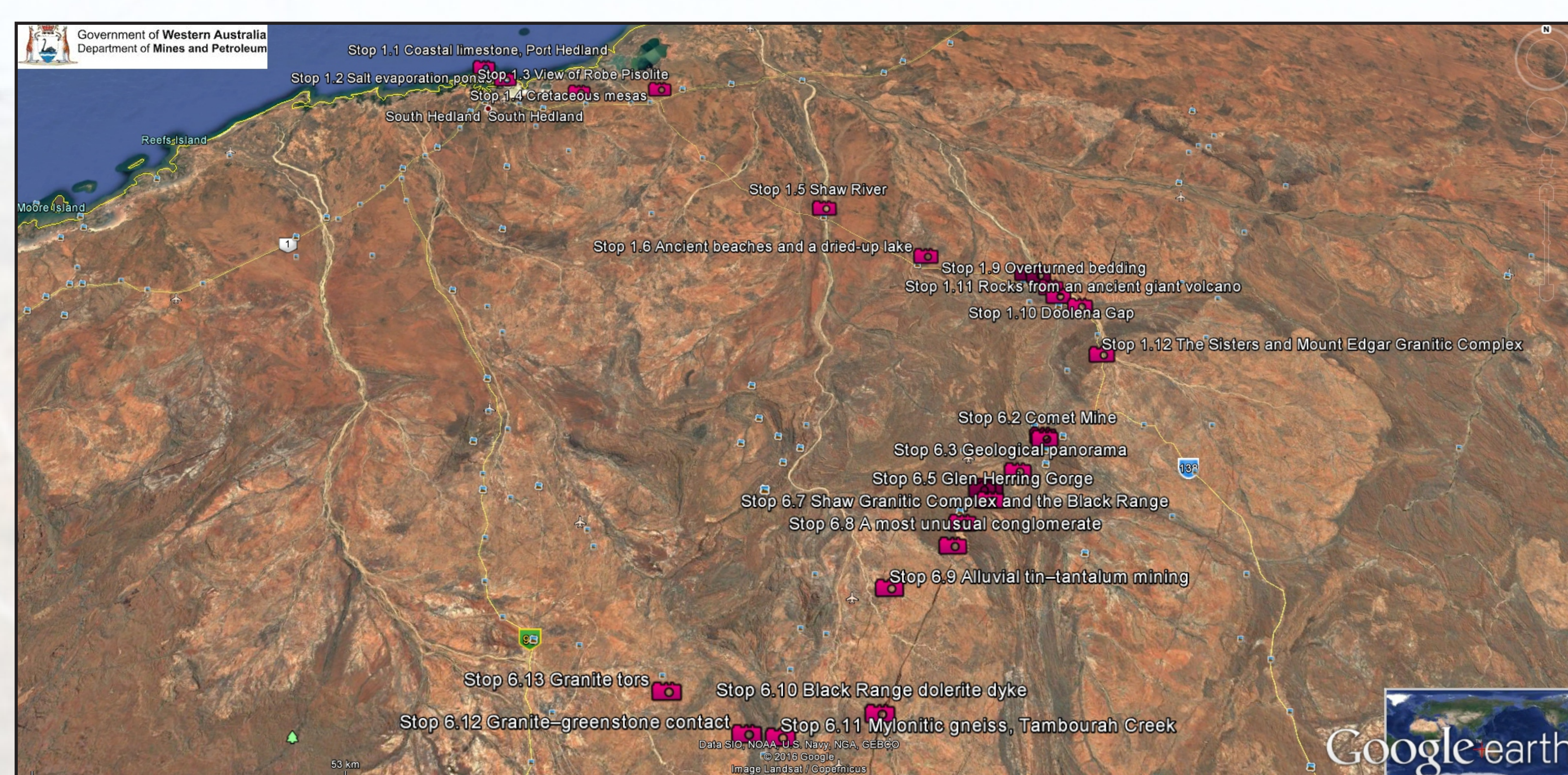
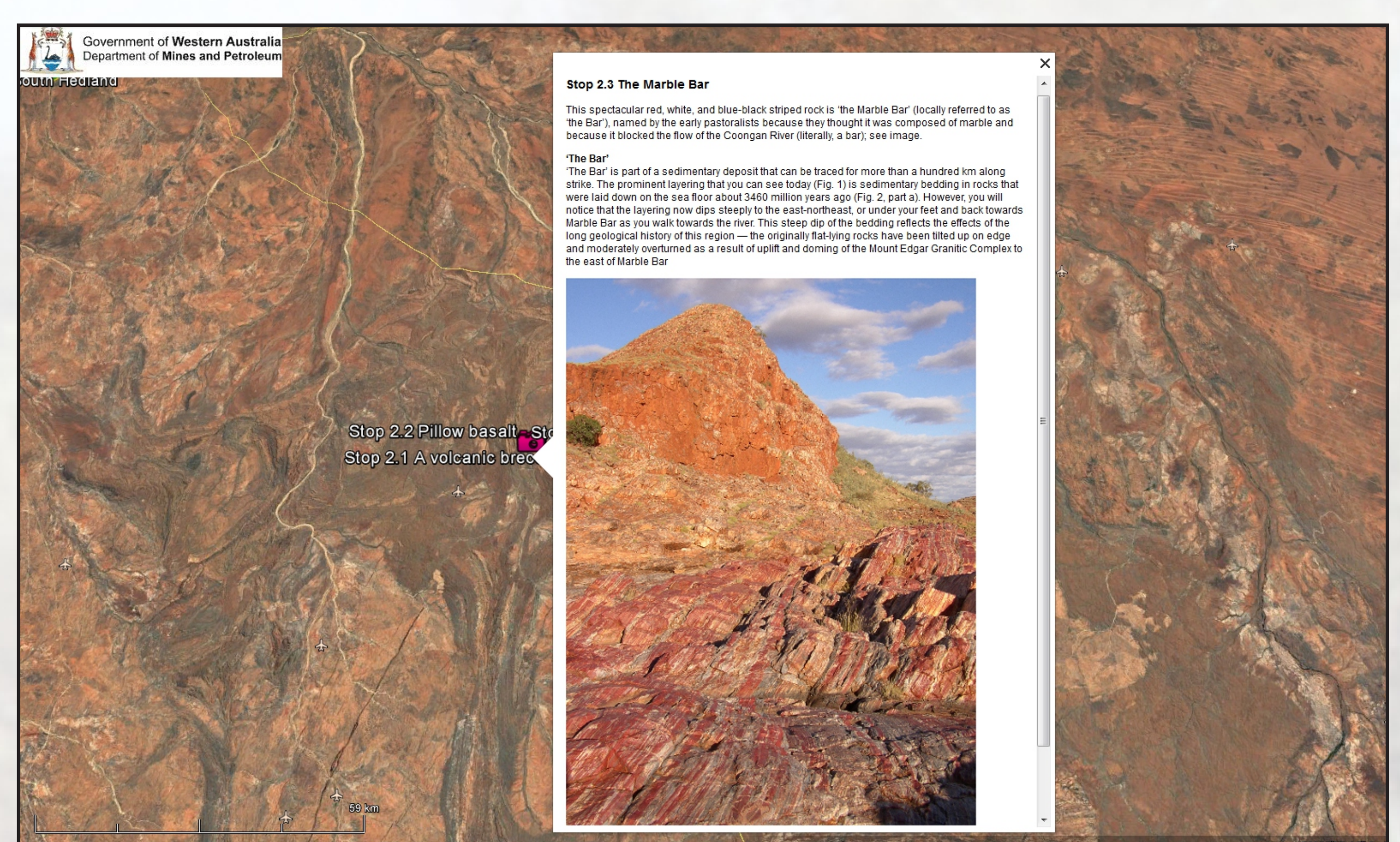
- News
- Open days
- Training
- Workshops

Online systems

- Interactive Geological map (GeoVIEW.WA)
- Mineral Exploration Reports (WAMEX)

[Home](#)
[Geological Survey of Western Australia \(GSWA\)](#)
[Geology and geophysics](#)
[Geology of Western Australia](#)
[Geotourism](#)

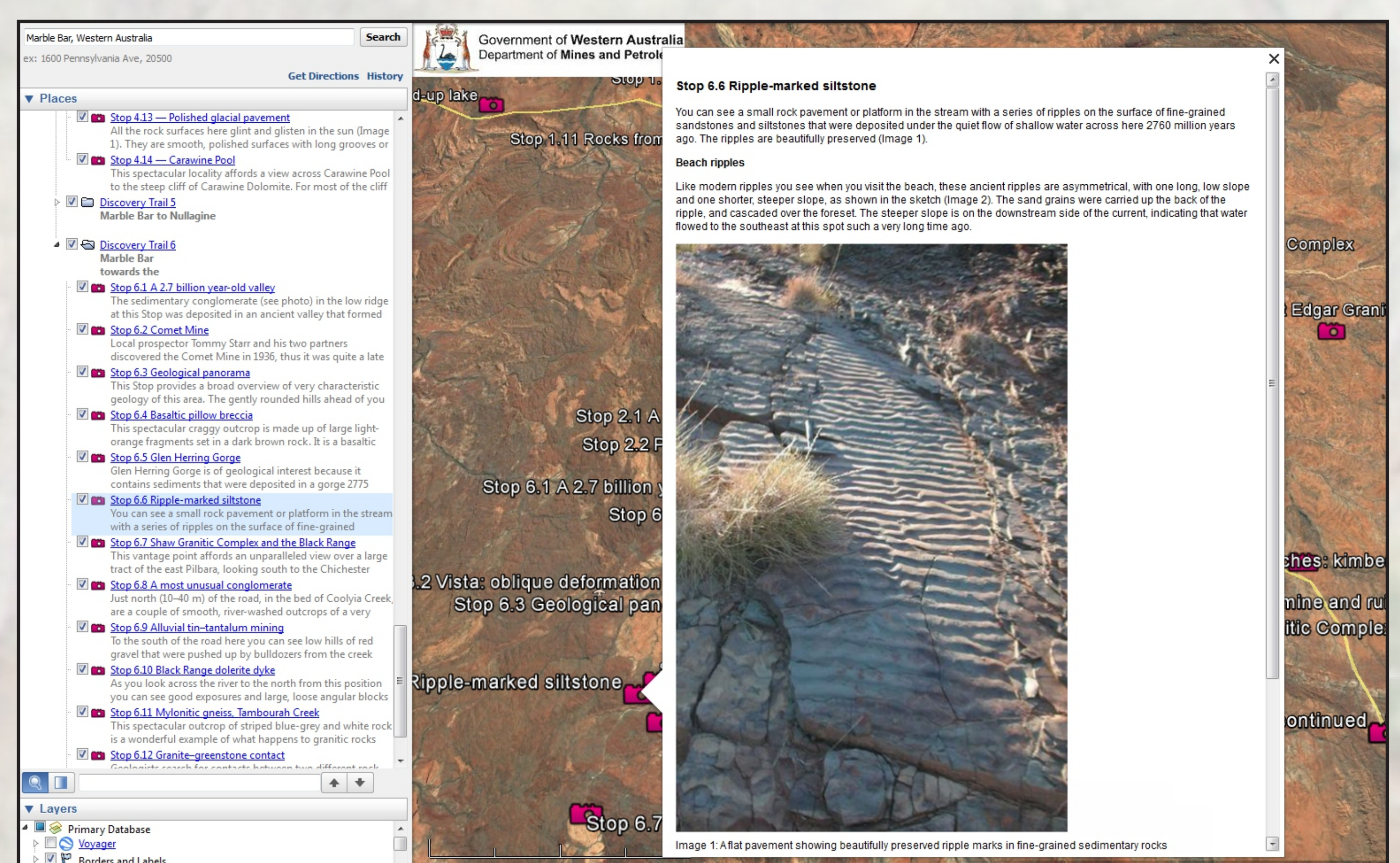
Geotourism is 'tourism that focuses on geology and landscape as the basis for providing visitor engagement, learning, and enjoyment' (Governing Council of the Geological Society of Australia, 2015). Western Australia has landscapes and rocks both old and new, well suited to a variety of tourism experiences. The Geological Survey of Western Australia (GSWA) develops geotourism products that can help the traveller to genuinely experience the magnificent geological heritage of the State.

Location of stops along virtual discovery **Trail 1** and **Trail 6**

Stop 2.3 on Trail 2: The 'Marble Bar' with image and geological description



Trail 2: Google Earth image tilted to show strike of Marble Bar Chert



Stop 6.6 on Trail 6: Ripple-marked siltstone pavement

Enjoy from your armchair!