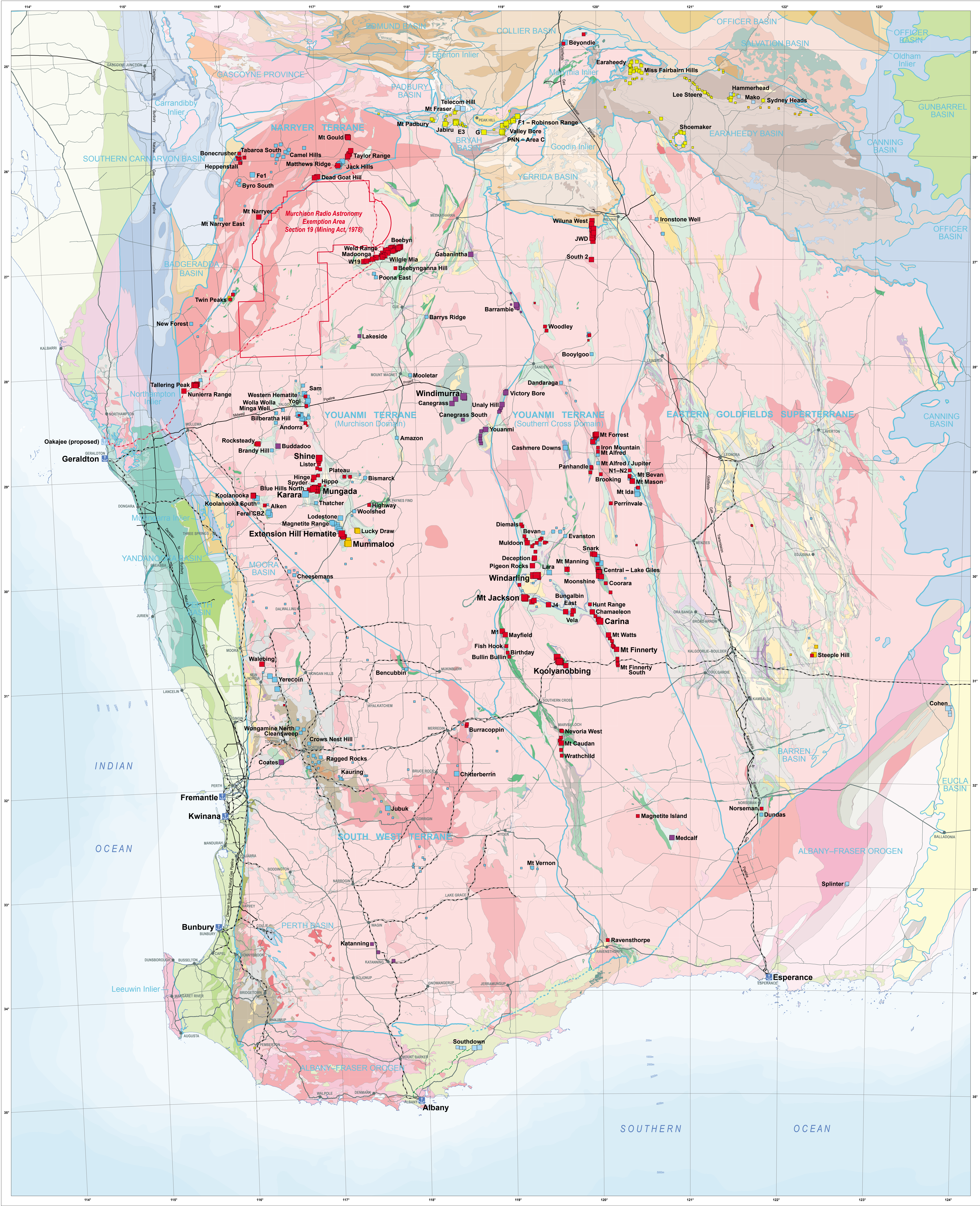


IRON ORE DEPOSITS OF THE YILGARN CRATON — 2014



SITE TYPE AND STATUS

- Windarling** ☐ Mine – operating or under development
- Moonshine** ☐ Mine – closed or proposed; deposit
- Woodley** ☐ Prospect
- ☐ Exploration target or occurrence

MINERALIZATION STYLES

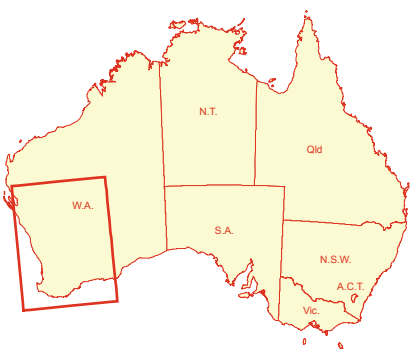
- Plastic and limonite rhyolite paleochannel mineralization or channel iron deposits (CID)
- Stratobound, clastic-hosted deposits – supergene enriched in Proterozoic basins and the Albany-Fraser Orogen
- Stratobound, clastic-hosted deposits – primary magnetite in detritals or banded iron-formation (BIF) in Proterozoic basins and the Albany-Fraser Orogen
- Supergene enriched hematite-goethite deposits derived from banded iron-formation or minor ultramafic rocks in granite-greenstone terranes
- Primary banded iron-formation deposits or their metamorphosed equivalents (magmatites) in granite-greenstone terranes
- Orthomagmatic layered mafic intrusives targeted for both iron (magnetite) and V-Ti (ilmenite) in granite-greenstone terranes

- Tectonic boundary – Yilgarn Craton
- Tectonic boundary – Yilgarn Craton, concealed
- Tectonic boundary – other
- Port, operating
- Port, proposed
- Townsite / locality
- Road
- Railway, operating
- Railway, proposed
- Gas pipeline, operating
- Gas pipeline, proposed
- Slurry pipeline (magnetite concentrate), proposed
- Coastline

Theme	Date Currency	Organization ¹
Interpreted bedrock geology of Western Australia	2008	Geological Survey of Western Australia, Department of Mines and Petroleum
Iron ore sites (MINEDEX)	May 2014	Geological Survey of Western Australia, Department of Mines and Petroleum
Murchison Radio Astronomy Exemption Area	May 2014	Department of Mines and Petroleum
Gas pipeline	May 2014	Department of Mines and Petroleum
Topography	2013	Landgate
Bathymetry	2002	Department of Transport

¹ DMAP data can be viewed interactively via GeoVIEW WA (www.dmp.wa.gov.au/geoview), and related datasets can be downloaded from the Geospatial Data and Software Centre (www.dmp.wa.gov.au/geospatial)

² WA State Government unless otherwise indicated



Compiled by RW Cooper 2014
Geology and tectonic boundaries based on:
(1) Cassidy, K.F., Chapman, D.C., Kopp, B., Barnes, M.E., Brown, S.A., Brown, R.S., Charnock, P.R. and Gray, M. 2009. A revised geological framework for the Yilgarn Craton, Western Australia. Geological Survey of Western Australia, Record 2009/8, 8p.
(2) Type, M. and Hocking, R.M. (compilers) 2007. Tectonic units of Western Australia, 1:500 000 – Preliminary version. Geological Survey of Western Australia, Digital data layer.
(3) Type, M. and Hocking, R.M. (compilers) 2008. Interpreted bedrock geology of Western Australia, 1:500 000. Geological Survey of Western Australia, Digital data layer.
Information on mines, deposits, prospects, and other occurrences was extracted from the DMAP Mines and Mineral Deposits (MINEDEX) database (www.dmp.wa.gov.au/mineindex), viewed May 2014.
Cartography by J. Lesiak
Edited by S.R. White and K. Greenberg
Published by the Geological Survey of Western Australia
This map is published in digital format (PDF) and is available online at www.dmp.wa.gov.au/GovernmentPublications.
Copies are available from:
Information Centre
Department of Mines and Petroleum
100 Plain Street
East Perth, Western Australia 6004
Phone: +61 8 9222 2400
Website: www.dmp.wa.gov.au
The recommended reference for this map is:
Cooper, RW 2014. Iron ore deposits of the Yilgarn Craton – 2014 (1:1 500 000 scale). Geological Survey of Western Australia.
Disclaimer
This product was produced using information from various sources. The Department of Mines and Petroleum (DMP) and the State cannot guarantee the accuracy, currency or completeness of the information. DMP and the State accept no responsibility and disclaim all liability for any loss, damage or costs incurred as a result of any use of or reliance whether wholly or in part upon the information provided in this publication or incorporated into it by reference.



Government of Western Australia
Department of Mines and Petroleum

Geological Survey of Western Australia
RICK ROBERTSON
EXECUTIVE DIRECTOR

SCALE 1:1 500 000
0 20 40 60 80 100 120 140 160 180 200
Kilometres
ALBERS EQUAL AREA PROJECTION WITH CENTRAL MERIDIAN 121° AND STANDARD PARALLELS 17°30' AND 31°30'
HORIZONTAL DATUM: GEOCENTRIC DATUM OF AUSTRALIA 1984 (GDA84)

IRON ORE DEPOSITS OF THE YILGARN CRATON — 2014

© Western Australia June 2014