

DUMBLEYUNG  
GEOLOGICAL SURVEY OF WESTERN AUSTRALIA

AUSTRALIA 1:250 000 GEOLOGICAL SERIES

SHEET SI 50-7

SYMBOLS

- Geological boundary  
Asymmetric fold  
Svergence  
Zvergence  
Bedding (facing not implied)  
inclined  
Air photo treatment or trend line  
Metamorphic foliation  
inclined  
vertical  
isomorphous  
Oreolite banding  
inclined  
vertical  
isomorphous  
Primary igneous foliation  
inclined  
vertical  
horizontal  
Primary igneous banding  
inclined  
vertical  
isomorphous  
Primary igneous lineation  
Highway with national route marker  
Formed road  
Track  
Railway (ST) with station or siding  
Railway (ST) abandoned  
Power line  
Townsite, gazetted  
pop. 1000 - 10 000  
pop. less than 1000  
Landing  
Landing ground  
Horizontal control: major, minor  
Benchmark, height accurate  
Sand dune  
Watercourse intermittent  
Pool  
Dam  
Rockhole  
Slope  
Spring  
Tank  
Waterhole  
Mine (not being worked)  
Quarry  
Mineral occurrence  
Clay  
Crustal rock  
Gold  
Tungsten  
Vanadium



REFERENCE

Qa	Ql	Qd	Qc
----	----	----	----

- Qa Alluvium - silt, sand and gravel in stream channels  
Ql Lacustrine deposits - silt and gyttaceous clay and silt in plays lakes  
Qd Coluvium and minor alluvium - silt and sand in gullies and depressions; gyttaceous near plays lakes  
Qc Coluvium and minor alluvium - silt, sand and gravel; generally on slopes adjoining rock and laterite outcrops

Csa	Csd	Css	Cst	Csb
-----	-----	-----	-----	-----

- Csa Alluvium - silt and sand in broad valley flats; extensively reworked by present drainage  
Csd Conglomerate - boulders of quartzite, granite and dolerite in sandstone or claystone matrix  
Csd Residual sandstone - yellow and white sand; contains locally abundant limonite patches  
Cst Laterite - limonite cemented, nodular and massive duricrust; overlies deeply weathered bedrock  
Csb Silcrete - subhorizontal siliceous cemented sandstone with angular, embayed quartz grains

Ta	Ts
----	----

- Ta Alluvium - sand and gravel; remnant of former stream channel  
Ts Koolberr Sandstone - lithified medium-grained sandstone and minor pebble conglomerate; contains abundant plant fossils

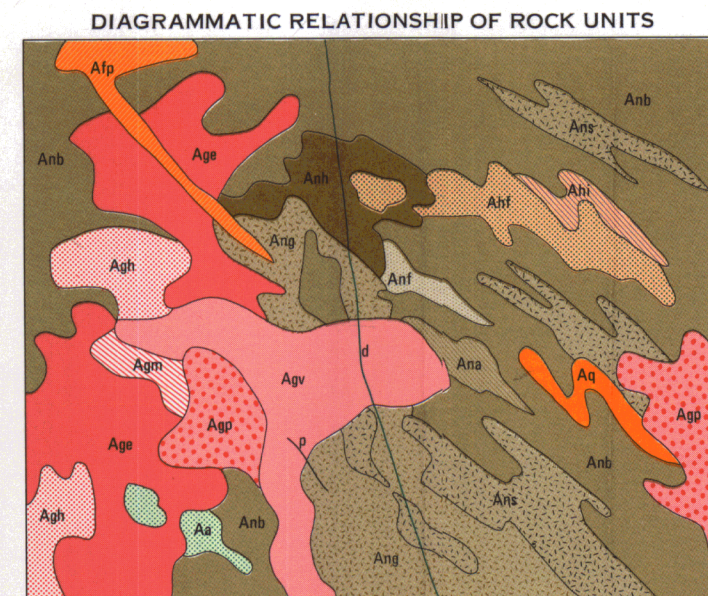
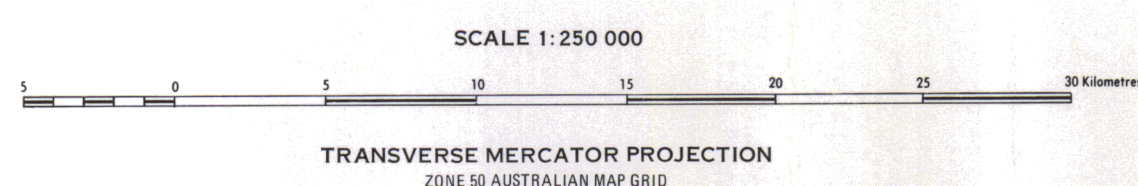
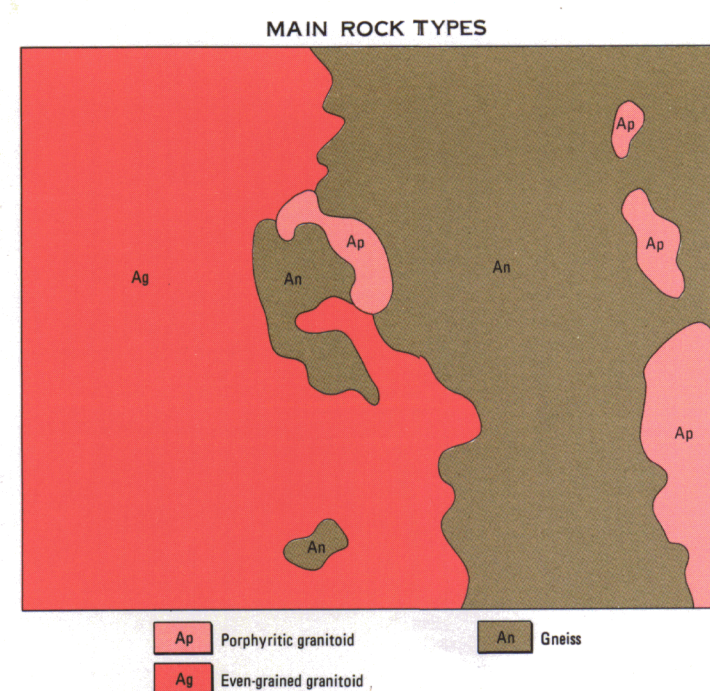
1/c	1/d	1/e	1/f	1/g
1/h	1/i	1/j	1/k	1/l
1/m	1/n	1/o	1/p	1/q
1/r	1/s	1/t	1/u	1/v
1/w	1/x	1/y	1/z	1/aa

- 1/c Dolerite dyke  
1/d Dolerite and dolerite dykes  
1/e Quartz vein  
1/f Pegmatite dyke  
1/g Dolerite with plagioclase phenocrysts  
1/h Porphyritic granite and adamellite with microcline phenocrysts  
1/i Sericite adamellite; variably textured, medium and coarse grained; locally porphyritic  
1/j Hornblende-bearing adamellite; medium and coarse grained  
1/k Biotite granite and adamellite; medium and coarse grained; locally foliated  
1/l Mixed granitic rocks; predominantly even-grained and porphyritic, granite and adamellite  
1/m Adamellite and granodiorite with subvolcanic biotite; medium grained; strongly recrystallized  
1/n Leucocratic granite and granodiorite; fine and medium grained  
1/o Leucocratic granodiorite; technically banded (including apatite and pegmatitic phenocrysts) with abundant neoclastic of mafic gneiss  
1/p Apatite gneiss; derived from porphyritic granite and adamellite  
1/q Adamellite, granodiorite and tonalite gneiss; biotite or hornblende foliar; minor compositionally banded phases  
1/r Quartz-feldspar biotite gneiss - compositionally and texturally banded  
1/s Heterogeneous, foliated and banded gneiss extensively intruded by granite and adamellite containing abundant biotite schist  
1/t Apatite  
1/u Quartzite  
1/v Mafic hornblende-plagioclase amphibolite; predominantly medium grained  
1/w Mafic hornblende-plagioclase-hypersthene granulite  
1/x Banded quartz-magnetite granulite gneiss (metamorphosed banded iron-formation)

INDEX TO ADJOINING SHEETS

Sheet	Scale	Sheet	Scale	Sheet	Scale	Sheet	Scale	Sheet	Scale
INDIAN OCEAN	INDIAN OCEAN	INDIAN OCEAN	INDIAN OCEAN	INDIAN OCEAN	INDIAN OCEAN	INDIAN OCEAN	INDIAN OCEAN	INDIAN OCEAN	INDIAN OCEAN
INDIAN OCEAN	INDIAN OCEAN	INDIAN OCEAN	INDIAN OCEAN	INDIAN OCEAN	INDIAN OCEAN	INDIAN OCEAN	INDIAN OCEAN	INDIAN OCEAN	INDIAN OCEAN
INDIAN OCEAN	INDIAN OCEAN	INDIAN OCEAN	INDIAN OCEAN	INDIAN OCEAN	INDIAN OCEAN	INDIAN OCEAN	INDIAN OCEAN	INDIAN OCEAN	INDIAN OCEAN
INDIAN OCEAN	INDIAN OCEAN	INDIAN OCEAN	INDIAN OCEAN	INDIAN OCEAN	INDIAN OCEAN	INDIAN OCEAN	INDIAN OCEAN	INDIAN OCEAN	INDIAN OCEAN
INDIAN OCEAN	INDIAN OCEAN	INDIAN OCEAN	INDIAN OCEAN	INDIAN OCEAN	INDIAN OCEAN	INDIAN OCEAN	INDIAN OCEAN	INDIAN OCEAN	INDIAN OCEAN
INDIAN OCEAN	INDIAN OCEAN	INDIAN OCEAN	INDIAN OCEAN	INDIAN OCEAN	INDIAN OCEAN	INDIAN OCEAN	INDIAN OCEAN	INDIAN OCEAN	INDIAN OCEAN
INDIAN OCEAN	INDIAN OCEAN	INDIAN OCEAN	INDIAN OCEAN	INDIAN OCEAN	INDIAN OCEAN	INDIAN OCEAN	INDIAN OCEAN	INDIAN OCEAN	INDIAN OCEAN
INDIAN OCEAN	INDIAN OCEAN	INDIAN OCEAN	INDIAN OCEAN	INDIAN OCEAN	INDIAN OCEAN	INDIAN OCEAN	INDIAN OCEAN	INDIAN OCEAN	INDIAN OCEAN
INDIAN OCEAN	INDIAN OCEAN	INDIAN OCEAN	INDIAN OCEAN	INDIAN OCEAN	INDIAN OCEAN	INDIAN OCEAN	INDIAN OCEAN	INDIAN OCEAN	INDIAN OCEAN

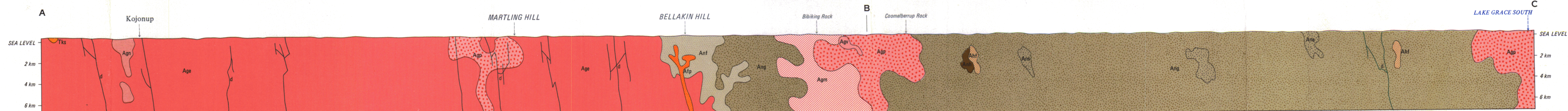
The sheet includes magnetic declination, 1980  
+ means declination is west and correction must be added to compass bearing to give true bearing  
- means declination is east and correction must be subtracted from compass bearing to give true bearing  
Actual change is - 1° annually



DIAGRAMMATIC SECTION

NATURAL SCALE

SECTION A-B-C



HON. DAVID PARKER, M.L.A.  
MINISTER FOR MINERALS AND ENERGY  
A. F. TRENDALL, DIRECTOR, GEOLOGICAL SURVEY DIVISION

DUMBLEYUNG  
SHEET SI 50-7

FIRST EDITION 1985  
© Western Australia 1985

16 JAN 1987  
DEPARTMENT OF MINES  
WESTERN AUSTRALIA