

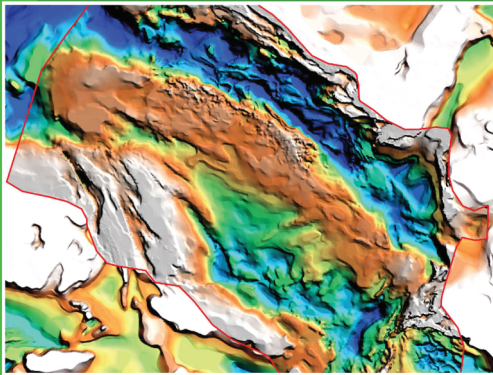


Department of Mines, Industry Regulation  
and Safety

REPORT  
182

## 2017 CANNING BASIN SEEBASE STUDY AND GIS DATA PACKAGE

by Frogtech Geoscience



EXPLORATION  
INCENTIVE  
SCHEME



Geological Survey of Western Australia



In 2005, Frogtech Geoscience completed a 'Structurally Enhanced view of Economic BASEment' (OZ SEEBASE) project, resulting in a continental-scale depth-to-basement grid highlighting the Phanerozoic basins across Australia. With the acquisition of many new potential field and seismic datasets in the Canning Basin since then, the Geological Survey of Western Australia (GSWA) contracted Frogtech to revise the SEEBASE model of the Canning Basin, and with an extension over the west Amadeus Basin.

The 2017 Canning SEEBASE project has markedly increased the resolution of the Canning Basin depth-to-basement model compared to the 2005 version, improved identification and mapped major structures, basement faults, crustal architecture, basement composition, and basement heat flow. These new products form a valuable pre-competitive dataset for both the minerals and petroleum industries.

The USB contains:

- 2017 Canning Basin SEEBASE Report as a PDF
- ASCII files
- ArcGIS mxd files

### 2017 Canning Basin SEEBASE study and GIS data package, Report 182

Enquiries to Email: [bookshop@dmirs.wa.gov.au](mailto:bookshop@dmirs.wa.gov.au); Phone: +61 8 9222 3459.

ASCII files Free (online)

Cost: \$55 [inc. GST]