[illegible]

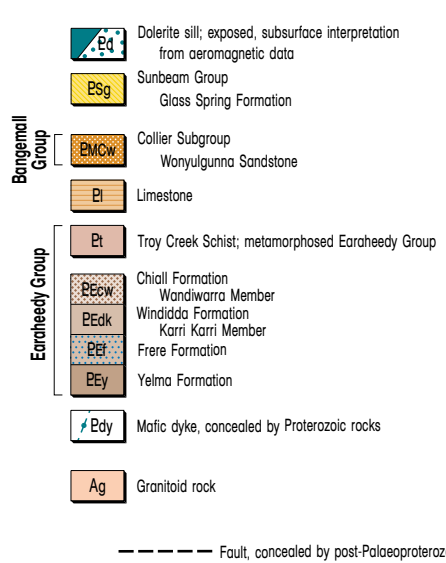
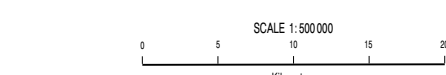
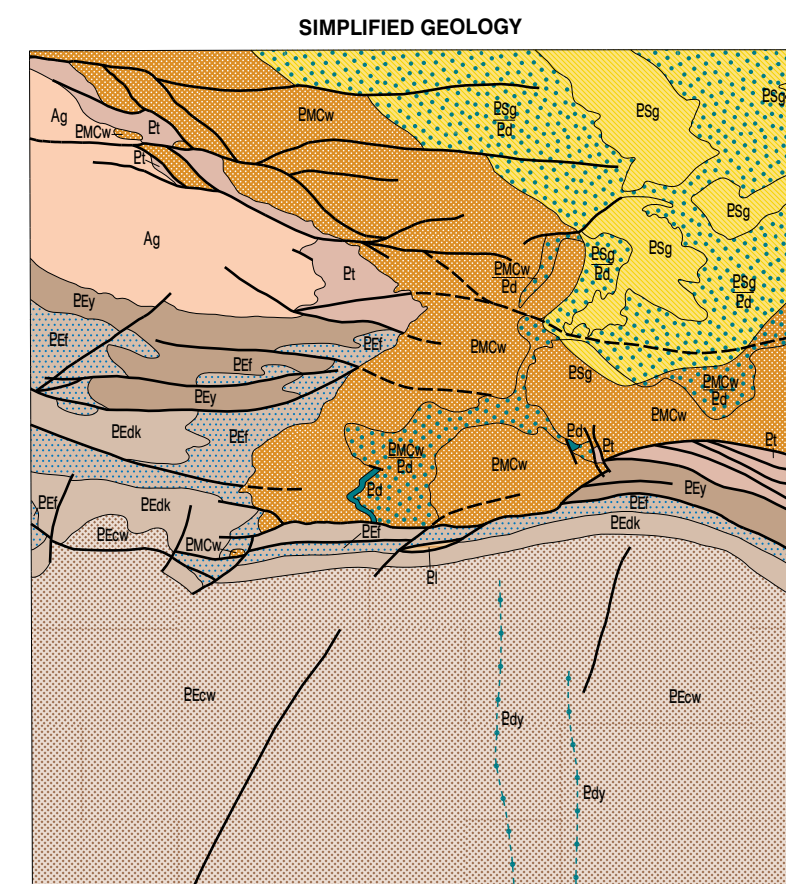
DEPARTMENT OF MINERALS
AND ENERGY
L. C. FANFORD, DIRECTOR GENERAL



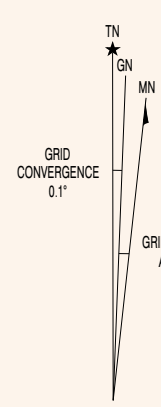
GOVERNMENT OF WESTERN AUSTRALIA
HON. NORMAN MOORE, M.L.C.
MINISTER FOR MINES



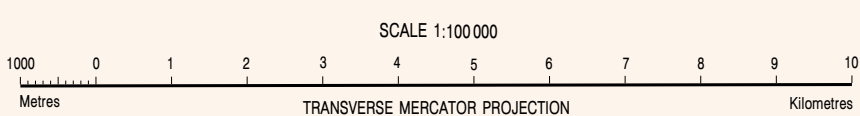
GEOLOGICAL SURVEY OF
WESTERN AUSTRALIA
DAVID BLIGHT, DIRECTOR



Western Australian Geological Survey, 1:100 000 Geological Series



True north, grid north and magnetic north are shown diagrammatically on the top left of the map. Magnetic north in 1999 and moves easterly by 2.5 years.



METHWIN
SHEET 3047 FIRST EDITION 1999

© Western Australia 1999