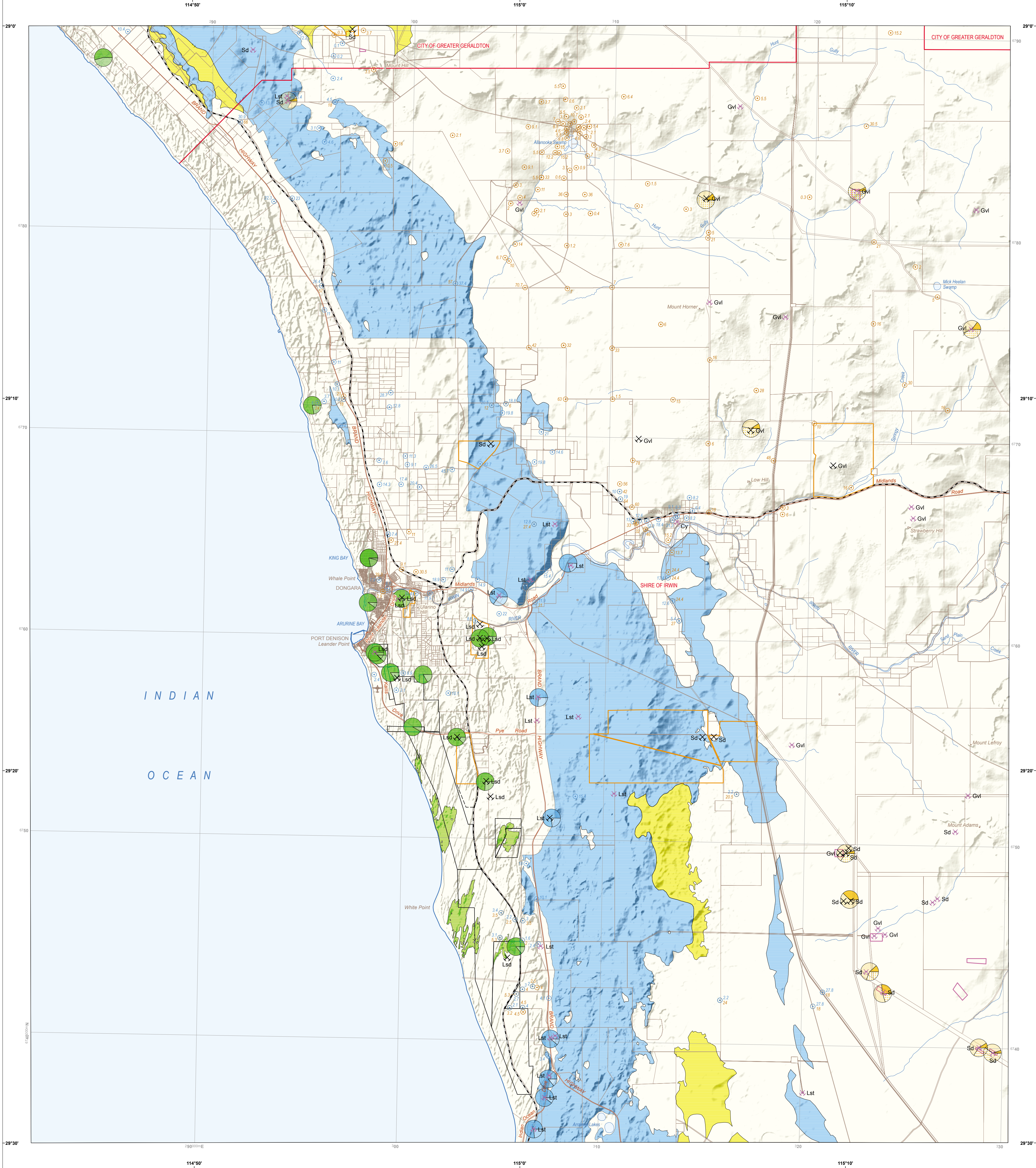


DONGARA–DENISON
GEOLOGICAL SURVEY OF WESTERN AUSTRALIA

REGIONALLY SIGNIFICANT BASIC RAW MATERIALS
1:100 000 RESOURCE POTENTIAL FOR LAND USE PLANNING



Regionally significant basic raw materials

- Limesand
- Limestone
- Sand

Tenure for basic raw materials

- Mining lease, live (Mining Act 1978)
- Prospecting licence (Mining Act 1978)
- Extractive industry licence (Planning and Development Act 2005)
- Crown reserve for basic raw materials

Boreholes

- Showing depth to groundwater, in metres
- Showing thickness of surficial material, in metres

Analyses

- Limesand: CaCO_3 Acid insoluble residue
- Limestone: CaCO_3 Acid insoluble residue
- Sand and gravel: Sand, Fines, Gravel

Quarries and pits

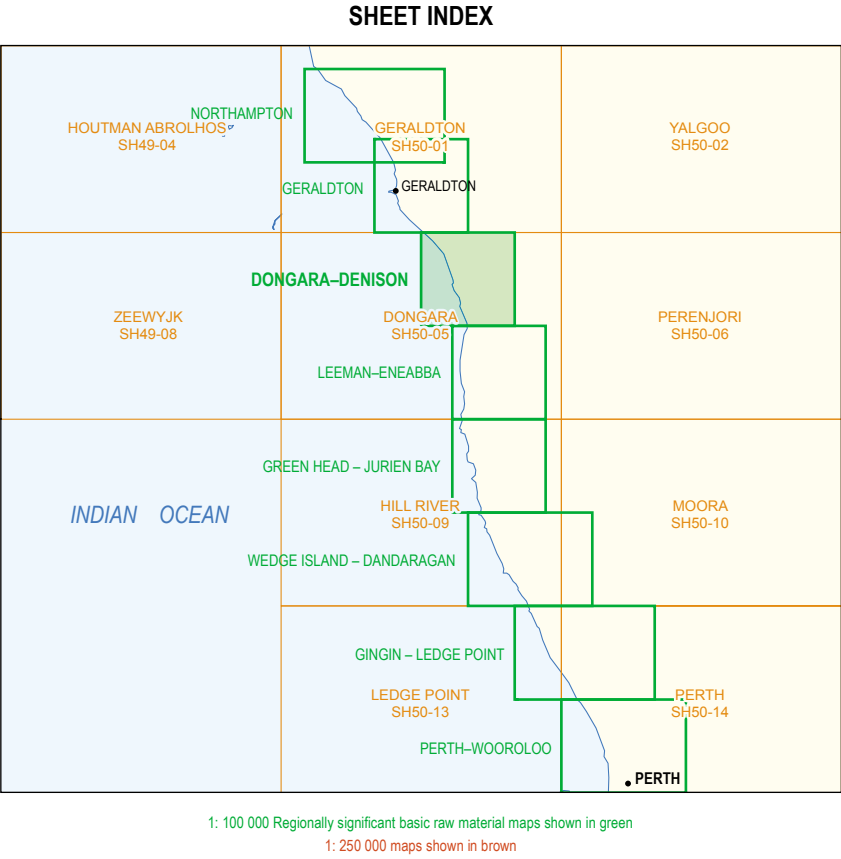
- Active
- Inactive
- Cy.....Clay
- Gvl.....Gravel
- Lsd.....Limesand
- Lst.....Limestone
- Sd.....Sand

Other symbols

- Highway / major road
- Railway, operating
- Airfield
- Local Government Authority boundary
- Land title boundary, simplified
- Drainage

NOTE: Regionally significant basic raw materials have been compiled from previous geological mapping using various thresholds to identify those areas that have the potential to provide a long-term supply of these materials. Thus, these areas are primarily those with the largest potentially extractable quantities taking depth to water table into account where appropriate. A range of practical high-level planning and mining constraints were applied, but these do not take into account any constraints imposed by State and Commonwealth environmental or heritage legislation. This mapping was compiled to assist government and community decision-making, but cannot be taken as a government endorsement of approval or priority to mining in these areas.

*Includes local planning scheme with zones of residential, rural residential, rural small holdings, special use, commercial, and public purposes. Also includes areas with existing capital development that is deemed to be too costly to remove or relocate, National Parks and Class 'K' Nature Reserves.



DATA SOURCES		
Theme	Date	Organization*
Boreholes	Dec 2012	Department of Water
Cadastral	Jan 2014	Landgate
Mineral Titles*	June 2015	Mineral Titles Division, Department of Mines and Petroleum
Regionally significant basic raw materials	Oct 2013	Geological Survey of Western Australia, Department of Mines and Petroleum
Topography	2014	Landgate

*DMP data can be viewed interactively via GeoVIEW WA <www.dmp.wa.gov.au/geoview>, and related datasets can be downloaded from the GSWA Data and Software Centre <www.dmp.wa.gov.au/dsacentre>

1 WA State Government unless otherwise indicated

Compiled by Geological Survey of Western Australia 2015
Cartography by C Schroder
Edited by F Edson and K Greenberg
Published by Geological Survey of Western Australia
This map is published in digital format (PDF) and is available online at <www.dmp.wa.gov.au/GSWApublications>. Copies are available from:
Information Centre
Department of Mines and Petroleum
100 Plain Street
East Perth, Western Australia 6004
Phone: +61 8 9222 3469 Fax: +61 8 9222 3444
Website: www.dmp.wa.gov.au/gswa Email: geologicalsurvey@dmp.wa.gov.au
The recommended reference for this map is:
Geological Survey of Western Australia 2015, Regionally significant basic raw materials, Dongara-Denison (1:100 000 scale). Geological Survey of Western Australia, Resource potential for land use planning.
Disclaimer
This product was produced using information from various sources. The Department of Mines and Petroleum (DMP) and the State cannot guarantee the accuracy, currency or completeness of the information. DMP and the State accept no responsibility and disclaim all liability for any loss, damage or costs incurred as a result of any use of or reliance on whether wholly or in part upon the information provided in this publication or incorporated into it by reference.

Map of Australia showing the location of the Dongara-Denison map within the regional context of Western Australia.

Government of Western Australia
Department of Mines and Petroleum

Geological Survey of Western Australia

ROYALTIES FOR REGIONS

Scale 1:100 000

1000 0 1 2 3 4 5 6 7 8 9 10
Metres

Scale 1:100 000
0 1 2 3 4 5 6 7 8 9 10
Kilometres

UNIVERSAL TRANSVERSE MERCATOR PROJECTION
HORIZONTAL DATUM: GEODESIC DATUM OF AUSTRALIA 1984
Grid lines indicate 10 000 metre interval of the Map Grid Australia Zone 50
The Map Grid Australia (MGA) is based on the Geocentric Datum of Australia 1984 (GDA84)
GDA84 positions are compatible within one metre of the datum WGS84 positions

GDA