

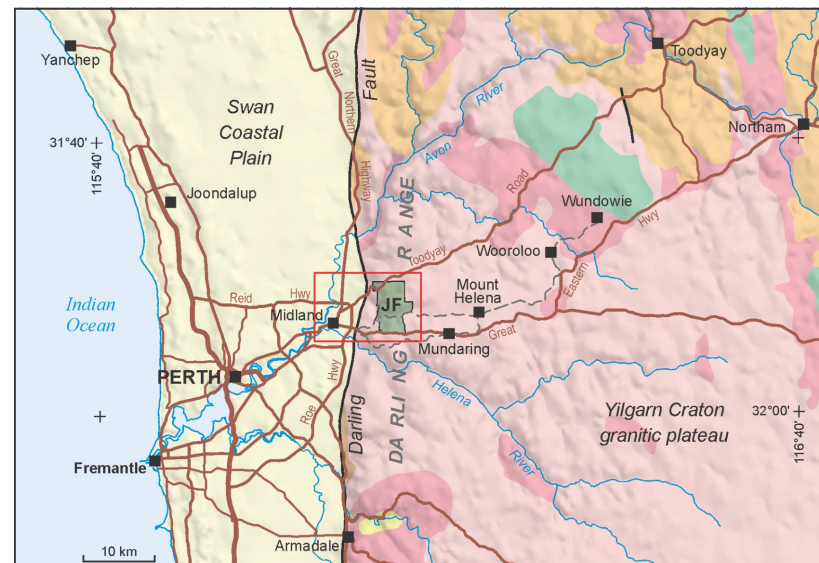
John Forrest National Park Geotrail – App

The popular **John Forrest National Park Geotrail** book is now available as a tour on your mobile device. Using the **Everythere** app, the geotrail links 10 waypoints in a self-guided excursion that offers insights into the relationship between the rocks, landscape, environment and the park's history.

The **Railway Reserve Heritage Trail** is suitable for hikers of all abilities, and the broad, well-graded surface is ideal for cycling, jogging or dawdling.

The app geotrail starts at the eastern entrance of John Forrest National Park at the Pechey Road - Swan Terrace car park and finishes at the National Park headquarters with its shady picnic area and curious kangaroos. Most of the waypoints are between the car park and National Park Falls.

Scan the QR code to download the app or start the tour.



▲ Location of the John Forrest National Park, Western Australia



▲ Views of the National Park Falls

John Forrest National Park Geotrail – App

Enquiries to publications@dmirs.wa.gov.au

Scan the QR code to download the Everythere app



Government of Western Australia
Department of Mines, Industry Regulation
and Safety

Geological Survey of
Western Australia

