

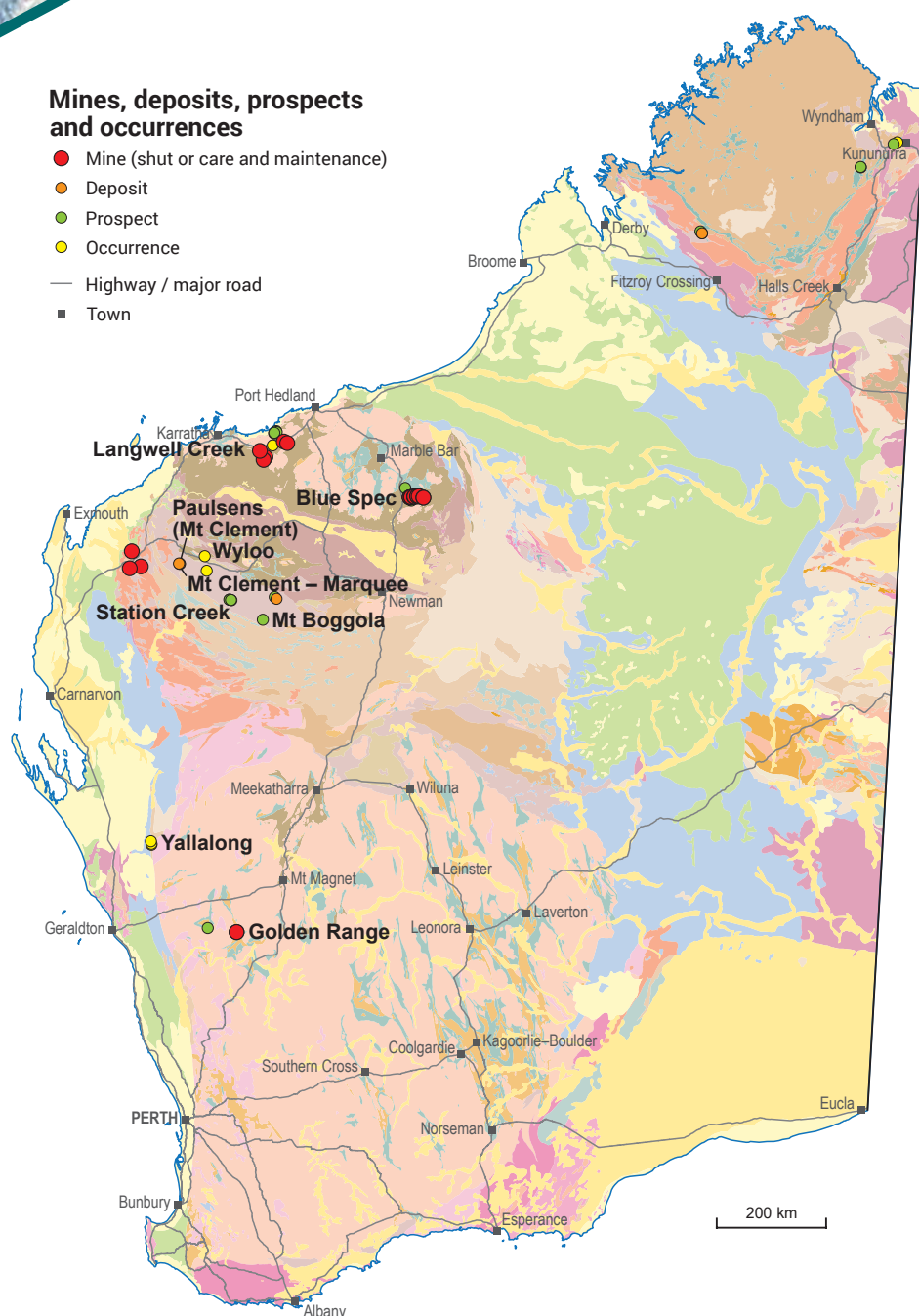
# ANTIMONY

## INVESTMENT OPPORTUNITIES

WORLD-CLASS RESOURCE PROVINCE | SECURE INVESTMENT LOCATION  
WORLD-LEADING GEOSCIENTIFIC DATA | GLOBAL MINING SERVICES INDUSTRY

### Mines, deposits, prospects and occurrences

- Mine (shut or care and maintenance)
- Deposit
- Prospect
- Occurrence
- Highway / major road
- Town



### Antimony resources in Western Australia are associated with two gold projects

- Mineral Resources from the Blue Spec and Paulsens Projects are over 1.4 Mt
- Black Cat Syndicate conducted studies indicating that a floatation circuit can be established at the Paulsens Project to process antimony and other base metals from the Mt Clement deposit. Antimony mineralisation at the Mt Clement deposit occurs in association with Pb, Ag, Cu and Au, and consists of multiple stacked lenses of fault controlled veins hosted within metasediment, breccia and talc-rich lithologies. The deposit is currently the 4th largest and 3rd highest grade antimony deposit in Australia. An Exploration Target of 3.9 – 5.4 Mt at 1.2 – 1.9% Sb for 47–103 kt Sb has been calculated

### Exploration

- Warriedar Resources announced a high-grade antimony discovery at the Ricciardo deposit, within the Golden Range Project (comprising five historical pits). The company has now defined high-grade antimony intervals below several historical pits over the project area, from both current and historical drilling, with results of up to 28.5% Sb. Most of the antimony mineralisation appears to be located above the main gold zones. There are high antimony recoveries of 81% with saleable concentrate grade of 49% Sb from the project
- Novo Resources are targeting historical antimony mines and vein material across its Pilbara ground, including at the Langwell Creek and Wyloo Projects. At Langwell Creek, rock samples returned up to 4.7% Sb. At Wyloo, sampling yielded peak results of 0.38% Sb and 387 g/t Ag
- High-grade antimony has been noted from drilling and rock-chip sampling from various sites in the West Pilbara region (Mt Boggola, Station Creek, Mt Clement – Marquee Resources), and Mid-West region (Yallalong). A review by TechGen Metals of their West Pilbara projects identified rock sample assays of >1% Sb at the Mt Boggola Project, and up to 7.05% Sb at the Station Creek Project. At the Yallalong Project, Octava Minerals noted that some of the highest grade antimony drill intercepts in Australia were recorded from previous drilling



Department of Energy, Mines,  
Industry Regulation and Safety

demirs.wa.gov.au

Geological Survey of  
Western Australia



## Antimony resources ranked by contained Sb (kt)

Mineral Resource Estimates reported in accordance with JORC (2012) unless otherwise stated

Project	Status	Owner	Commodity	Resources (Mt)	Av. grade Sb (%)	Contained Sb (kt)	Resource date
Paulsens	Under development	Black Cat Syndicate	Au–Cu–Sb–Ag–Pb	1.210	1.190	14 328	24/11/2022
Blue Spec	Feasibility	Novo Resources Corp / Calidus Resources	Au–Sb	0.774	0.966	7 437	01/10/2013
<b>TOTAL</b>				<b>1.984</b>		<b>21 801</b>	

Resource estimates have been rounded

Spatial and resource estimate data sourced from WA Mines and Mineral Deposit database (MINEDEX)

Antimony is classified as a Critical Mineral by Australia, the US, Canada, Japan and the EU, essential for military applications and batteries, and subject to supply constraints due to restrictions being imposed. Antimony is one of the lesser-known critical minerals.

### Properties and uses

- Primarily used to make fire retardant materials in plastics, paints, enamels, glass, and pottery
- Alloyed with lead as a hardening agent and used in lead storage batteries
- In a variety of industrial applications including electronics (semiconductor devices such as infrared detectors and diodes), petrochemicals, telecommunications, aerospace, and weapons (explosives, lead shot, bullets)
- Emerging new green energy technologies and energy storage solutions, such as thermo-electric cells, photovoltaic cells, wind turbines, liquid metal batteries, and solar energy



Antimony specimen  
(Source: Rob Lavinsky, iRocks.com – CC-BY-SA-3.0)

### For more information

MINEDEX is a spatial and textual database of mining and exploration activity

**MINEDEX** [www.demirs.wa.gov.au/minedex](http://www.demirs.wa.gov.au/minedex)

GeoVIEW.WA is a free GIS-based spatial viewer

**GeoVIEW.WA** [www.demirs.wa.gov.au/geoview](http://www.demirs.wa.gov.au/geoview)

### Contact us

Mineral Investment Specialist  
Geological Survey and Resource Strategy Division  
Email: [minerals.investors@demirs.wa.gov.au](mailto:minerals.investors@demirs.wa.gov.au)  
Tel: +61 8 9222 3890

The DEMIRS MINEDEX, Statistics, and Titles and Geoscience Services teams have contributed to the production of this flyer



Department of Energy, Mines,  
Industry Regulation and Safety

December 2024

Geological Survey of  
Western Australia

