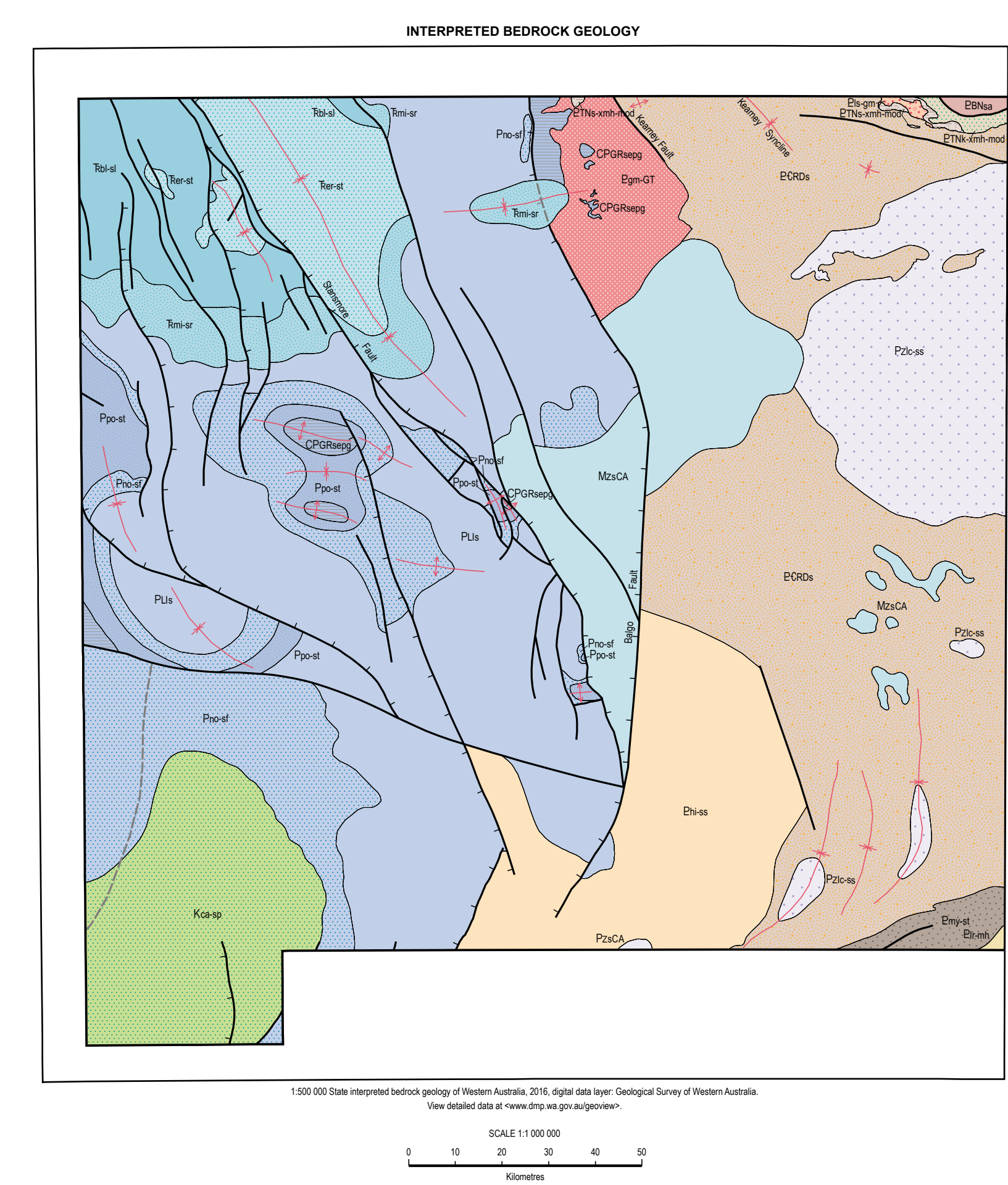


- DEPOSITIONAL REGIME**
- Alluvial units**
- C Colluvium derived from different rock types, includes gravel, sand, silt and clay
 - 17 Fungus-like clay, silt, and sand in alluvial deposits
 - 12b Quartzitic sand, silt, and gravel in alluvial deposits, derived from granitic rocks
- Sheetwash units**
- 19 Clay, silt, and sand in sheetwash fans
 - 17 Clay, silt, and sand with abundant fungus-like gill
- Alluvial units**
- 19 Clay, silt, and sand in drainage depressions
 - 19a Sand, silt, and clay in alluvial drainage depressions, clays, and ephemeral floodplain lakes, low-lying areas with internal drainage
 - 19b Superficial channel commonly forming a sheetwash cone, ephemeral
 - 19c Clay, silt, sand, and gravel in alluvial fans
 - 19d Sand, silt, and clay in localized depressions with eolian sandpan
- Lacustrine units**
- 19 Lake and lacustrine deposits, undifferentiated
 - 19a Sand, silt, and gravel in dunes adjacent to and within playa lakes
 - 19b Silt, sand, and gravel in high-lying fans adjacent to playa lakes
 - 19c Freshwater lake
 - 19d Mixed dune, eolian, and alluvial deposits, typically adjacent to playa lakes
 - 19e Saline and gypsumiferous evaporite, clay, silt, and sand in playa deposits
 - 19f Saline lake, rimmed by evaporite gypsum and carbonate deposits
- Eolian units**
- 19 Unconsolidated to consolidated, quartz-dominated eolian sand in longitudinal dunes
 - 19a Not like dune
- Residual unit**
- 19 Residual and eolian sand with minor silt and clay, low vegetation, dunes locally common

- RESIDUAL REGIME**
- Residual or residual units**
- 19a Quartzitic sand, silt, and clay, derived from weathered monzogranite and monzonite and metasedimentary equivalents, localized outcrops of weathered bedrock
 - 19b In situ weathered sedimentary rocks, quartzitic
 - 19c Fungus-like deposit, massive to blocky, derived from metasedimentary rocks, includes iron-cemented reworked products
 - 19d Fungus-like deposit, massive to blocky, derived from monzogranite and monzonite, and metasedimentary equivalents, includes iron-cemented reworked products
 - 19e Fungus-like deposit and non-cemented products derived from sedimentary rocks
 - 19f Dolerite, containing magnetite/hematite, residual in place
 - 19g Calcic, undifferentiated
 - 19h Groundwater calcic, locally forms low mounds, nodular to massive, commonly with alternating layers of carbonate and dolomite
 - 19i Siliceous, residual or siliceous dolomite
 - 19j Residual sand, locally iron-rich and silty, may contain fungus-like nodules and nodules

- EXPOSED REGIME**
- 19a Granitic rocks
 - 19b Monzogranite and monzonite, metamorphosed
 - 19c Carbonate-rich sedimentary rocks
 - 19d Metasedimentary rock, undifferentiated
 - 19e Sedimentary rock with locally derived calcium
 - 19f Volcanic rock, undifferentiated
 - 19g Mafic volcanic rocks, basalt
 - 19h Quartz-rich metamorphic rock with locally derived calcium
 - 19i Quartz-rich sedimentary rock with locally derived calcium



- Geological boundary**
- 19a Colluvium Formation
 - 19b Metasedimentary units, eastern Carving Basin
 - 19c Eolian Sandstone
 - 19d Blue Sand
 - 19e Mafic Sandstone
 - 19f Limestone Group
 - 19g Nomenclature Formation
 - 19h Fungus-like Sandstone
 - 19i Gneiss Group
 - 19j Paleozoic siliclastic units, Carving Basin
 - 19k Lucas Formation
 - 19l Metasedimentary units, Carving Basin
 - 19m Metasedimentary units, Carving Basin
 - 19n Metasedimentary units, Carving Basin
 - 19o Metasedimentary units, Carving Basin
 - 19p Metasedimentary units, Carving Basin
 - 19q Metasedimentary units, Carving Basin
 - 19r Metasedimentary units, Carving Basin
 - 19s Metasedimentary units, Carving Basin
 - 19t Metasedimentary units, Carving Basin
 - 19u Metasedimentary units, Carving Basin
 - 19v Metasedimentary units, Carving Basin
 - 19w Metasedimentary units, Carving Basin
 - 19x Metasedimentary units, Carving Basin
 - 19y Metasedimentary units, Carving Basin
 - 19z Metasedimentary units, Carving Basin

